


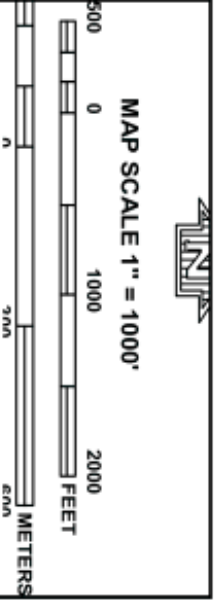
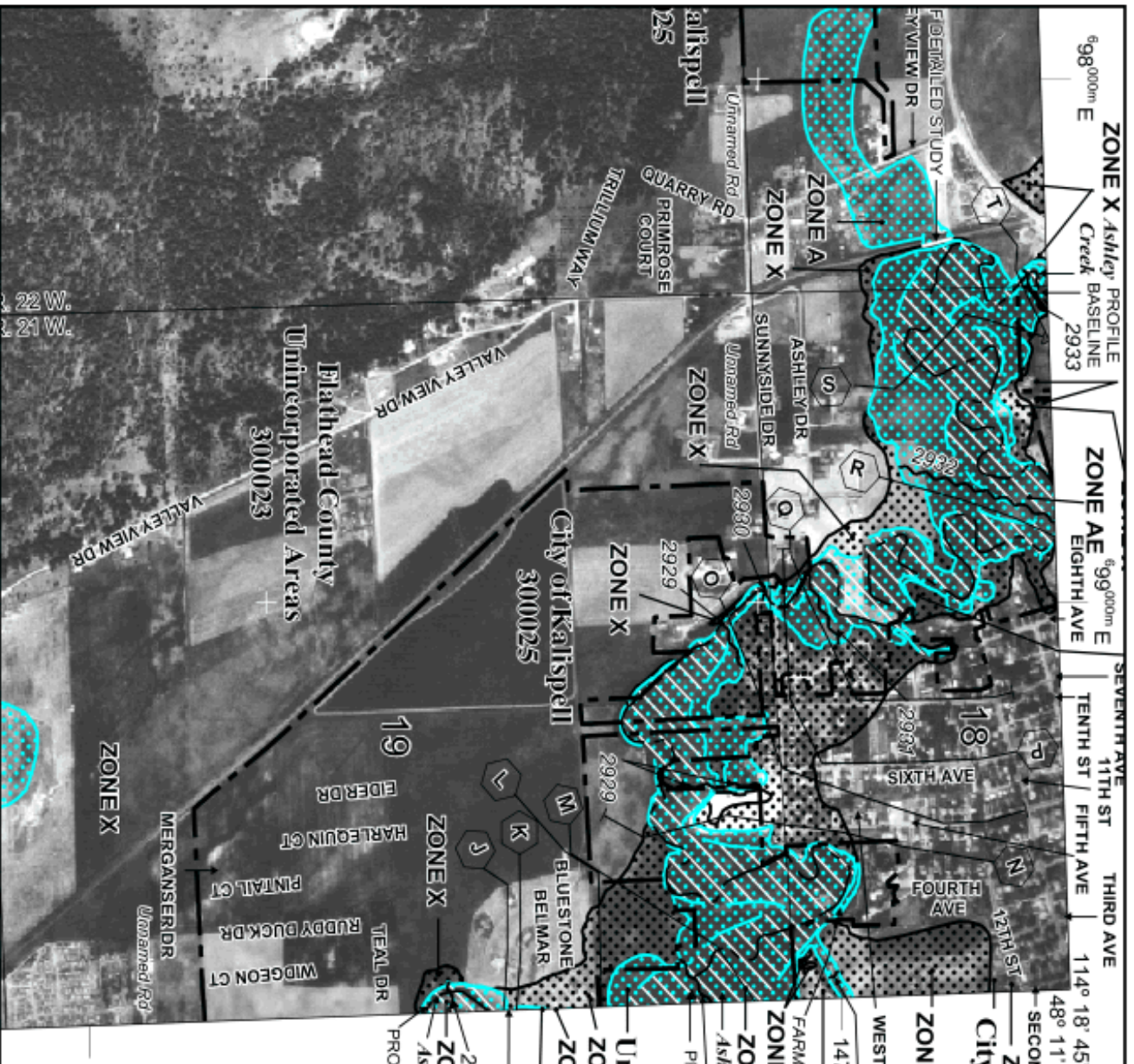


## Creating your own Flood Insurance Rate Maps (FIRM-ettes)

- Go to FEMA's "Map Service Center" at [www.msc.fema.gov](http://www.msc.fema.gov)
- In the box in the middle left, under "Looking for a Flood Map?" type in the full physical address of the property for which you need a map. Then click on the "Search" box below where you typed in the address.
- If it is a valid address, the next page will be "Map Search Results." You should see the Map Item ID (this is the "panel number"), the Description and the Effective Date. Click on the magnifying glass under View  to see your panel.
- You will now see the FIRM panel that contains your property. Click on the box on the left side of the screen that is under the "Zoom In" and "Zoom Out" buttons that says "Make a FIRMette."
- Using your cursor, drag the pink box that appears on the upper left of the map and center it over your property of interest on the map. If you can't tell where your property is on the map at the scale that is show, you can click on the "Zoom In" button on the left side of the screen  and then click somewhere on the map to see it closer.
- Once you have dragged and centered the pink box over your property of interest, use the buttons labeled "3. Create FIRMette" on the left side of the screen to create your map in either .pdf or .png format.
- Click on the box in the top left corner that says "Save your FIRMette"  and save it to your computer. Once it's saved, open it to print or email it.
- NOTE: If FEMA's Map Service Center website clunks out while you're trying to make your FIRMette (like it did to us while we were making this document), you may have to start over or use your browser's back button to get to somewhere you can start again.

See an example of a FIRMette on the reverse of this page.



# NATIONAL FLOOD INSURANCE PROGRAM

## NFIP

### PANEL 1815G

# FIRM

## FLOOD INSURANCE RATE MAP

### FLATHEAD COUNTY, MONTANA

### AND INCORPORATED AREAS

#### PANEL 1815 OF 3525

(SEE MAP INDEX FOR FIRM PANEL LAYOUT)

CONTAINS:

COMMUNITY	NUMBER	PANEL	SUFFIX
FLATHEAD COUNTY	300023	1815	G
KALISPELL, CITY OF	300025	1815	G

Notice to User: The Map Number shown below should be used when placing map orders; the Community Number shown above should be used on insurance applications for the subject community.

**MAP NUMBER**  
30029C1815G

**EFFECTIVE DATE**  
SEPTEMBER 28, 2007

Federal Emergency Management Agency

This is an official copy of a portion of the above referenced flood map. It was extracted using F-MIT On-Line. This map does not reflect changes or amendments which may have been made subsequent to the date on the title block. For the latest product information about National Flood Insurance Program flood maps check the FEMA Flood Map Store at [www.msc.fema.gov](http://www.msc.fema.gov)