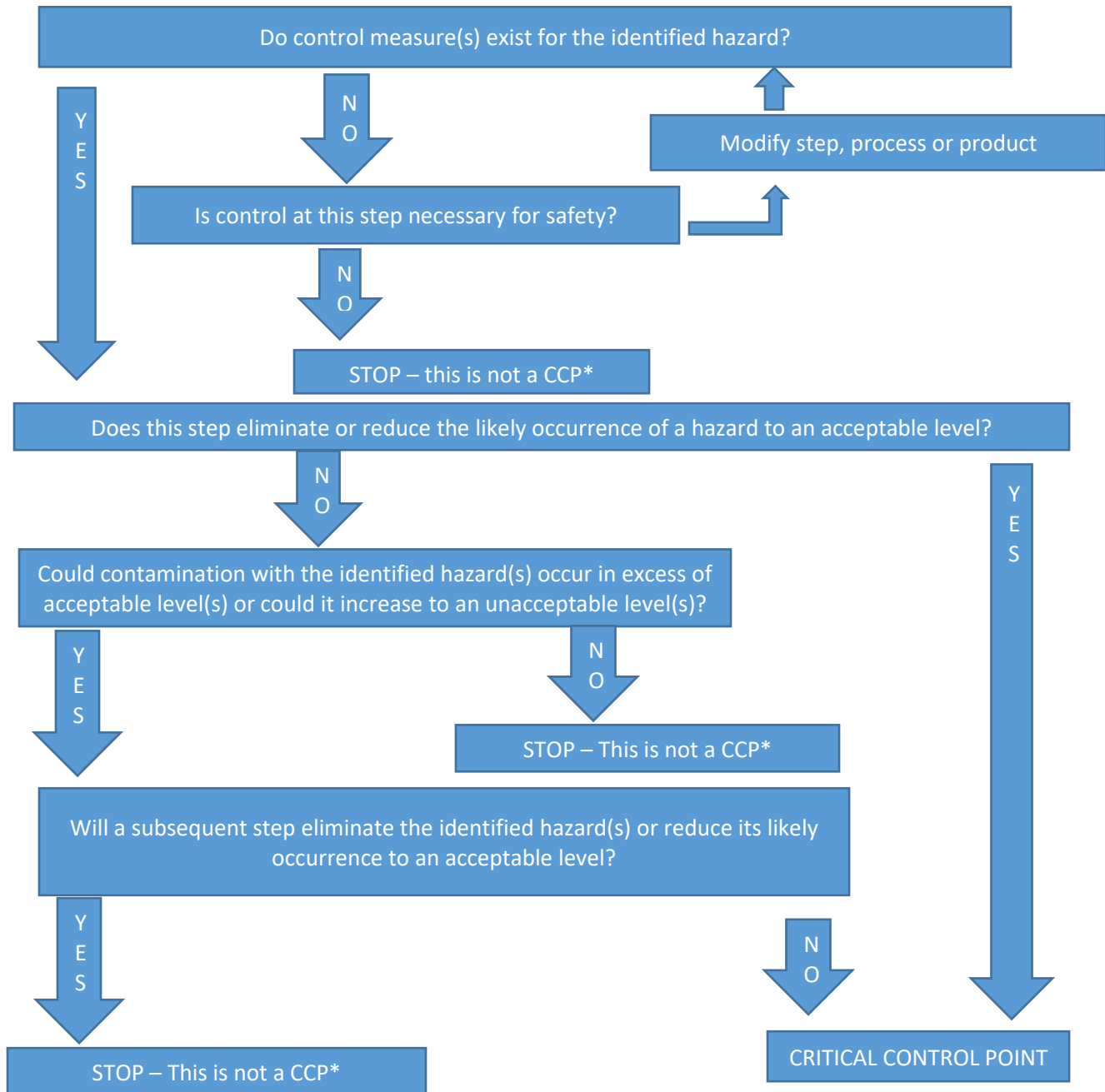


HACCP Decision Tree for Critical Control Points (CCP's)

Critical Control Point: means a point or procedure in a specific food system where loss of control may result in an unacceptable health risk.

Critical Limit: the maximum or minimum value to which a physical, biological, or chemical parameter must be controlled at a critical control point to minimize the risk that the identified food safety hazard may occur.



*Proceed to the next step in the process

