
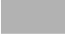




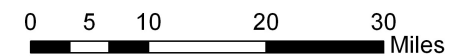


# MAP 2.1 FLATHEAD LANDS

FLATHEAD COUNTY GROWTH POLICY

## LEGEND

-  Lakes & rivers
-  City Jurisdiction
-  Federal land
-  State land
-  Tribal land
-  Private land




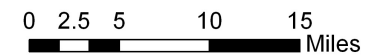
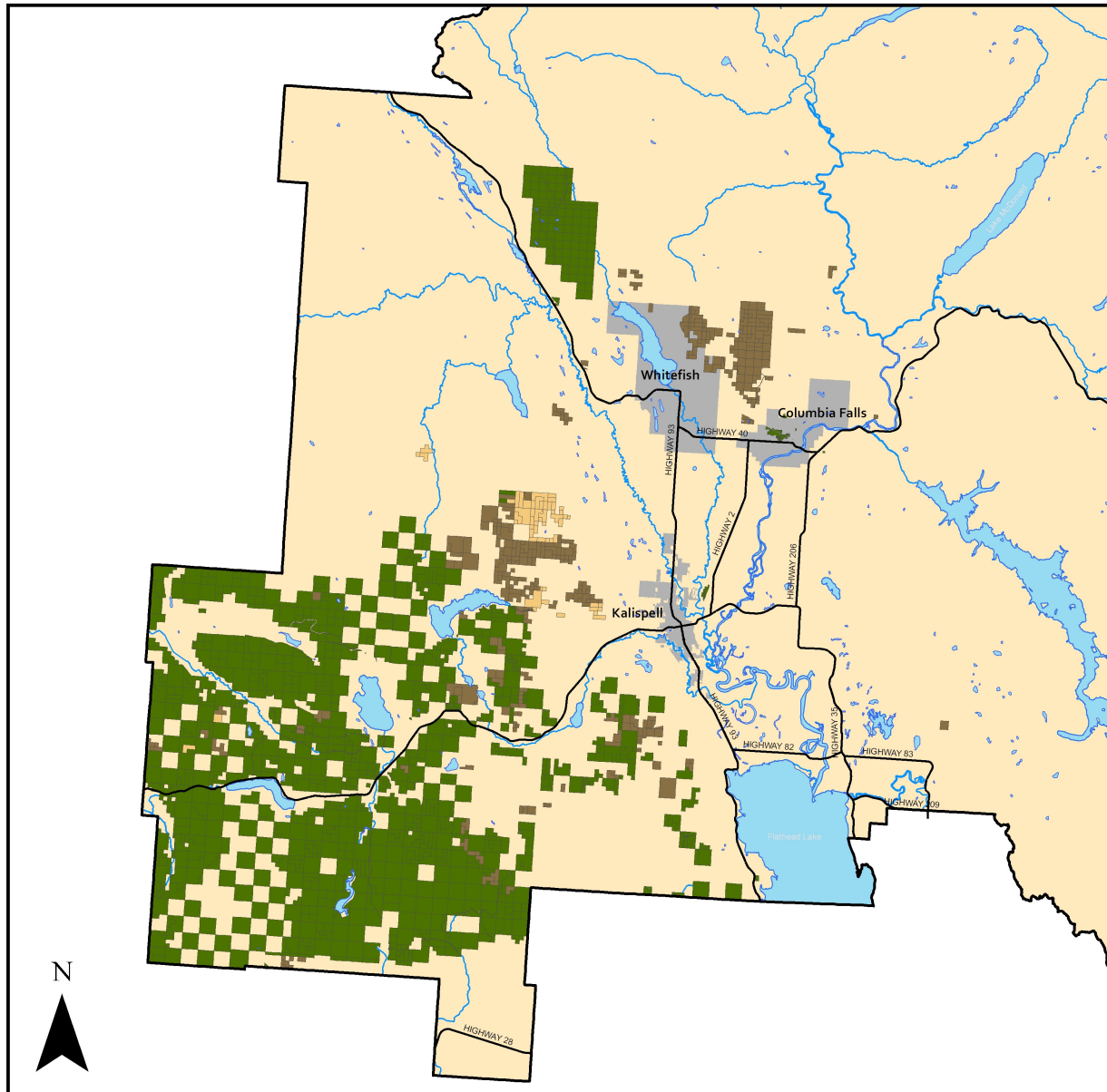
# MAP 2.2

## CORPORATE TIMBER LANDS

FLATHEAD COUNTY GROWTH POLICY

### LEGEND

-  Lakes & rivers
-  City Jurisdiction
-  F H Stoltze
-  Plum Creek Timber
-  Montana Forest Products

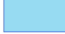






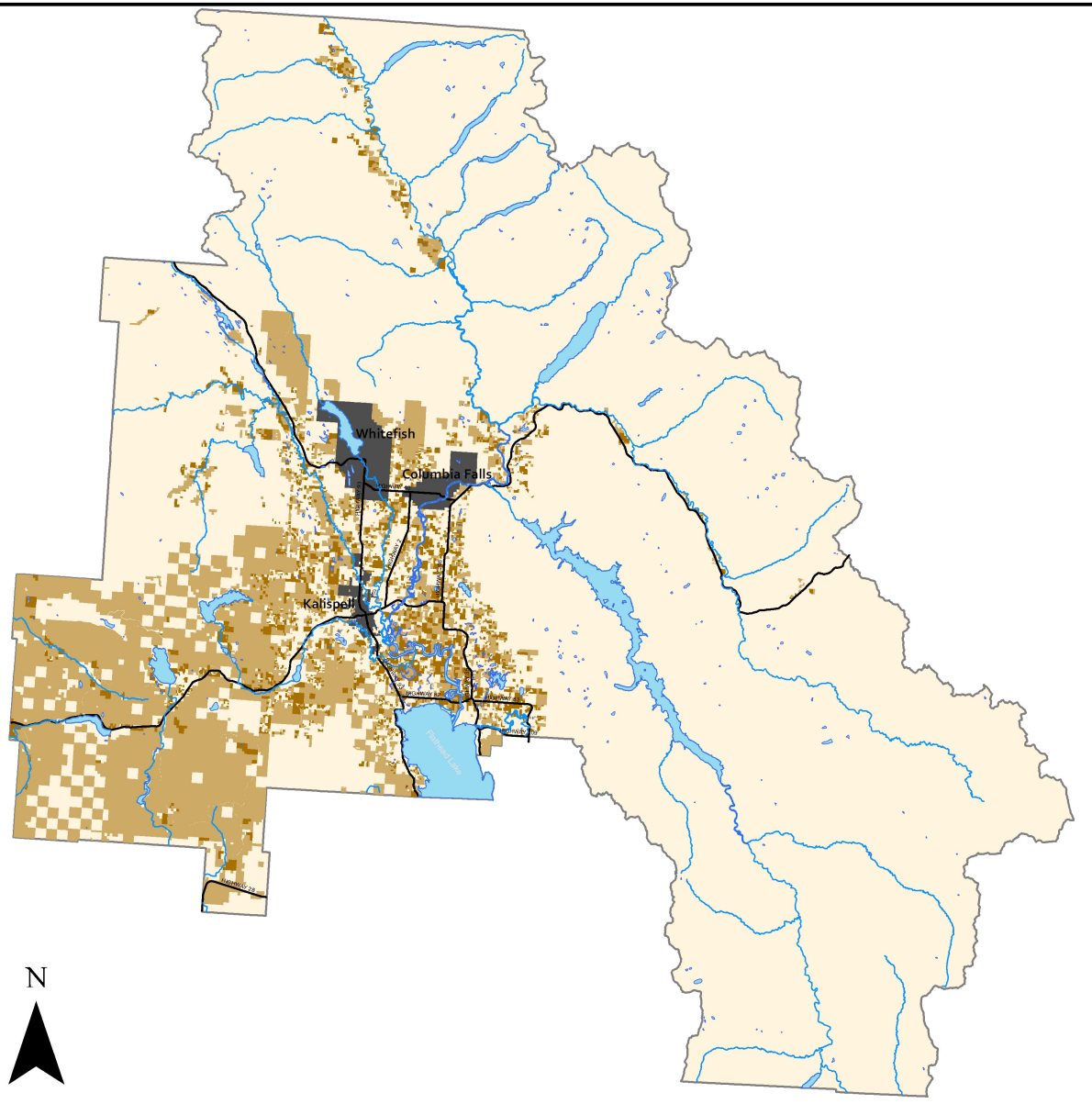
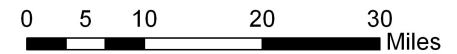
SOURCE: MONTANA CADASTRAL FRAMEWORK, FLATHEAD COUNTY PROPERTY OWNERSHIP  
FILE PATH: S:\FCPZ\LONG RANGE PLANNING\GROWTH POLICY\GROWTH POLICY UPDATE 10-11\MAPPING\CHAPTER 2 - LAND USE

# MAP 2.3 AGRICULTURAL LAND USE

FLATHEAD COUNTY GROWTH POLICY

## LEGEND

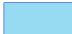




-  Lakes & rivers
-  City Jurisdiction
-  Farmstead Rural
-  Agricultural Urban
-  Agricultural Rural



# MAP 2.3 (A) AGRICULTURAL LAND USE

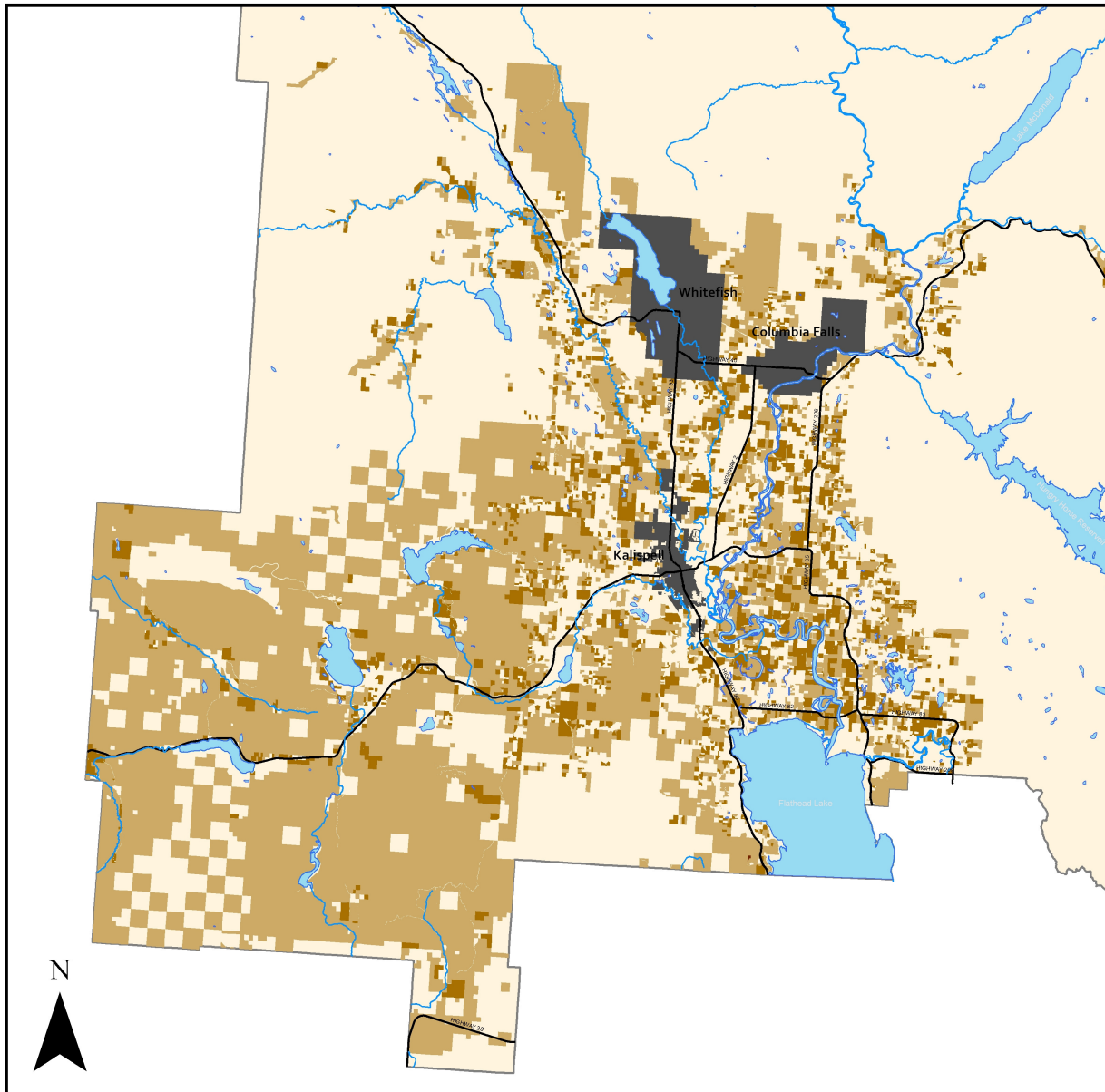
FLATHEAD COUNTY GROWTH POLICY

## LEGEND

-  Lakes & rivers
-  City Jurisdiction
-  Farmstead Rural
-  Agricultural Urban
-  Agricultural Rural

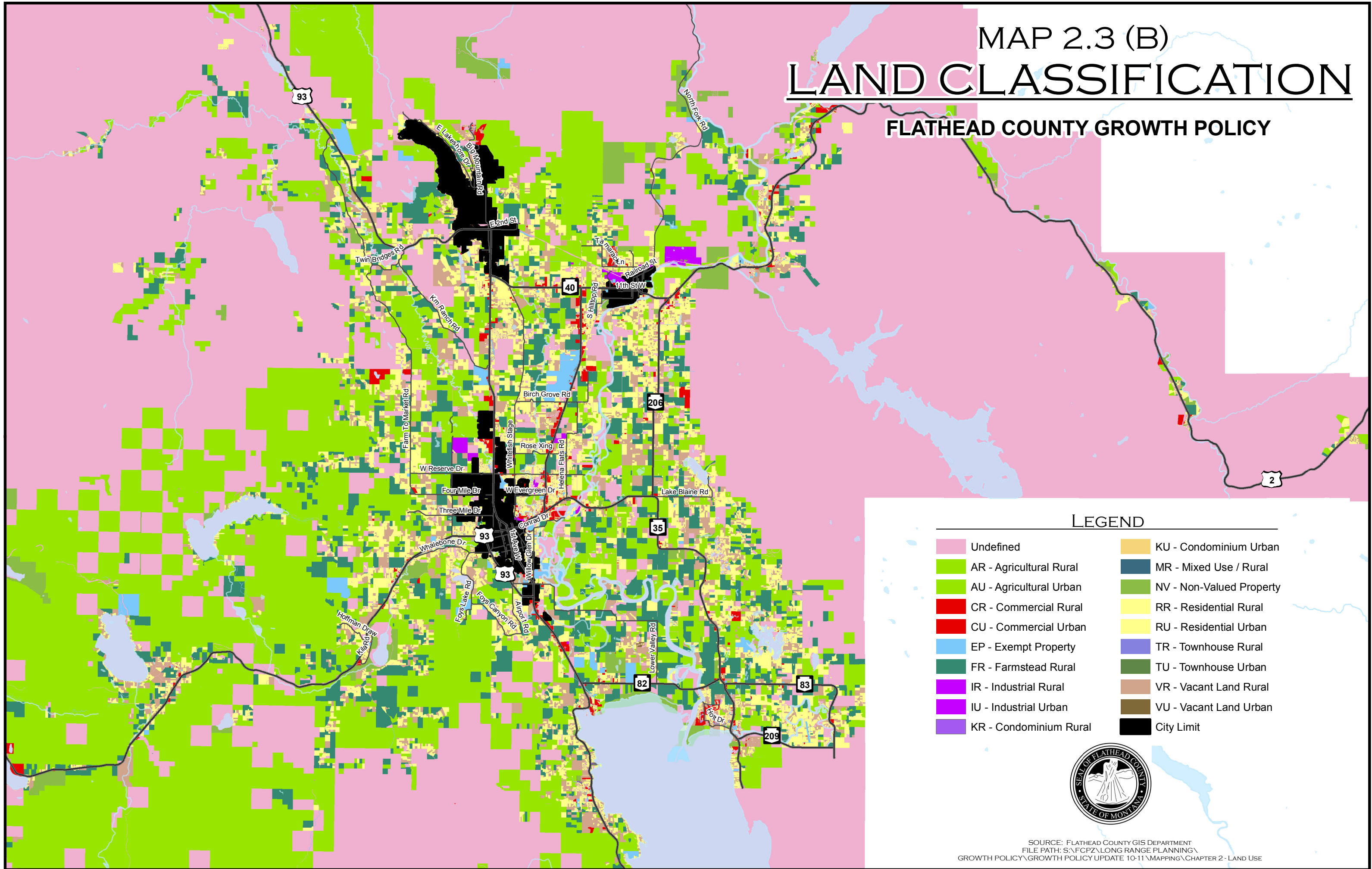


0 2.5 5 10 15 Miles



# MAP 2.3 (B) LAND CLASSIFICATION

## FLATHEAD COUNTY GROWTH POLICY



### LEGEND

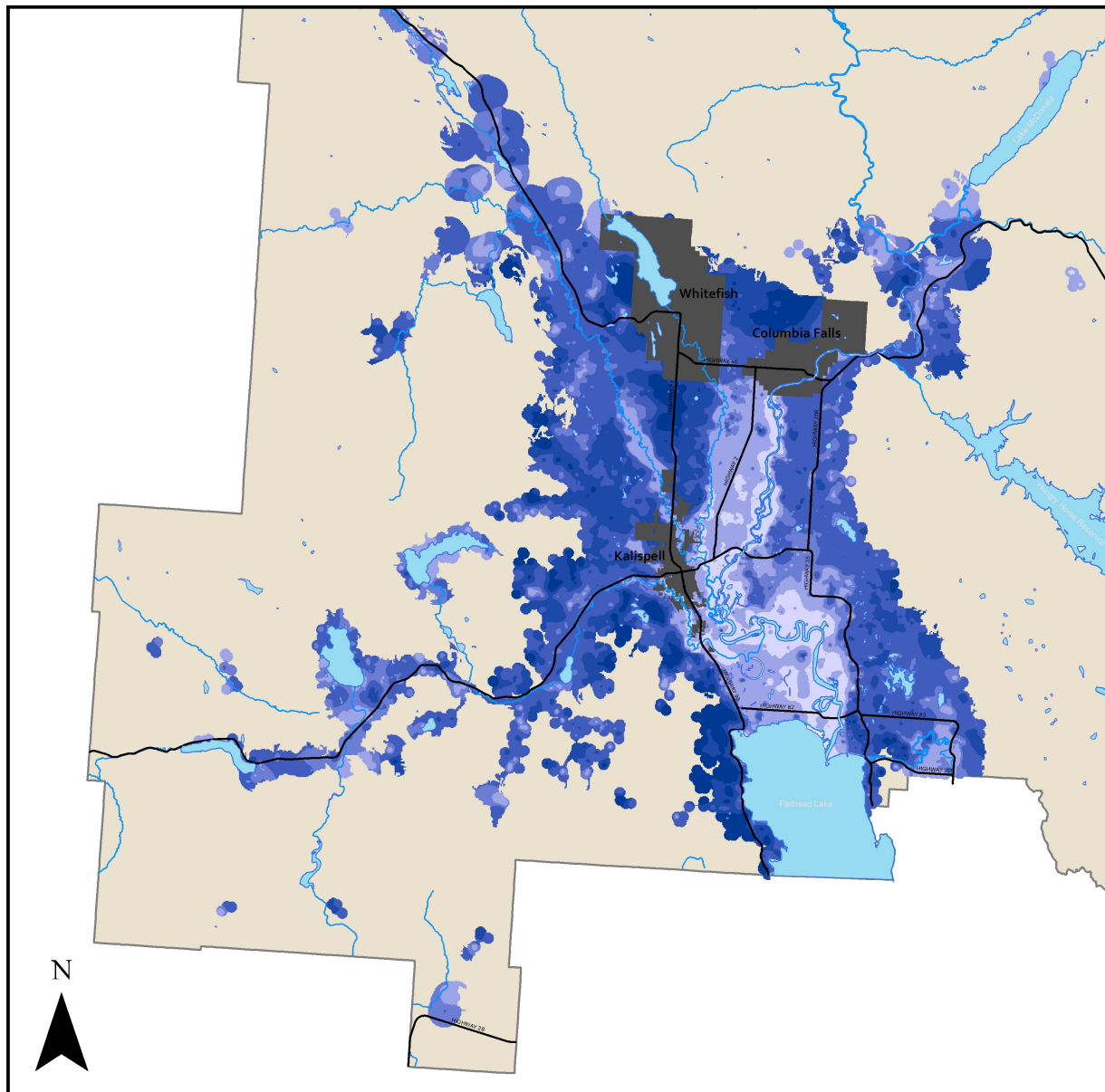
- |                         |                          |
|-------------------------|--------------------------|
| Undefined               | KU - Condominium Urban   |
| AR - Agricultural Rural | MR - Mixed Use / Rural   |
| AU - Agricultural Urban | NV - Non-Valued Property |
| CR - Commercial Rural   | RR - Residential Rural   |
| CU - Commercial Urban   | RU - Residential Urban   |
| EP - Exempt Property    | TR - Townhouse Rural     |
| FR - Farmstead Rural    | TU - Townhouse Urban     |
| IR - Industrial Rural   | VR - Vacant Land Rural   |
| IU - Industrial Urban   | VU - Vacant Land Urban   |
| KR - Condominium Rural  | City Limit               |



SOURCE: FLATHEAD COUNTY GIS DEPARTMENT  
 FILE PATH: S:\FCPZ\LONG RANGE PLANNING\  
 GROWTH POLICY\GROWTH POLICY UPDATE 10-11\MAPPING\CHAPTER 2 - LAND USE

# MAP 2.4 GROUNDWATER

## FLATHEAD COUNTY GROWTH POLICY



### LEGEND

- Lakes & rivers
- City Jurisdiction

### Approximate Depth to Groundwater

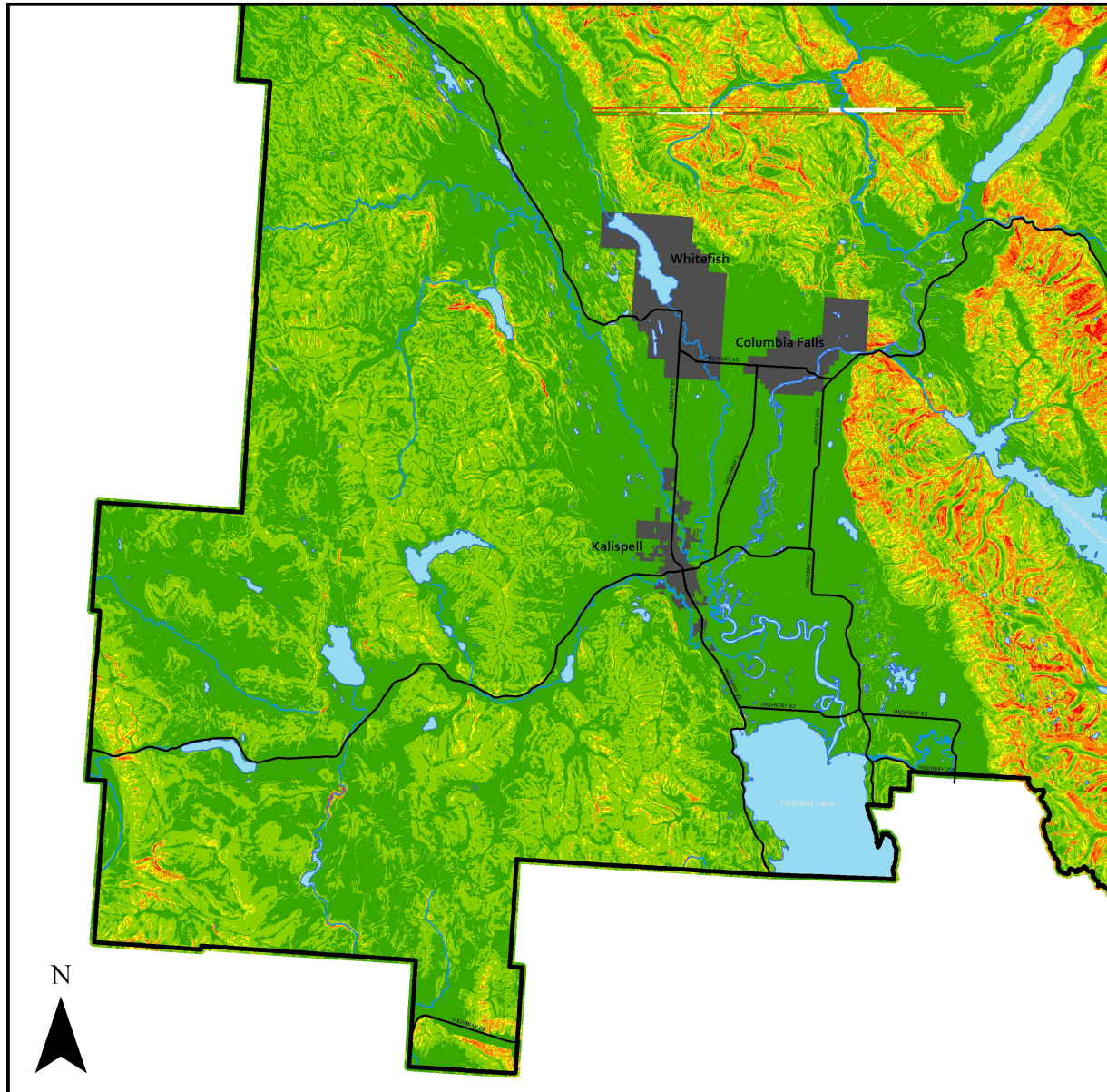
- 5
- 6 - 25
- 26 - 40
- 41 - 100
- 101 - 200
- 201 - 1000










0 2.5 5 10 15 Miles

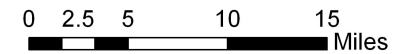
# MAP 2.5 STEEP SLOPES

## FLATHEAD COUNTY GROWTH POLICY



### LEGEND

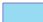







-  Lakes & rivers
-  City Jurisdiction
- Slope**
-  Up to 12%
-  Up to 25%
-  Up to 30%
-  Up to 40%
-  Over 40%

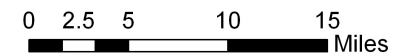
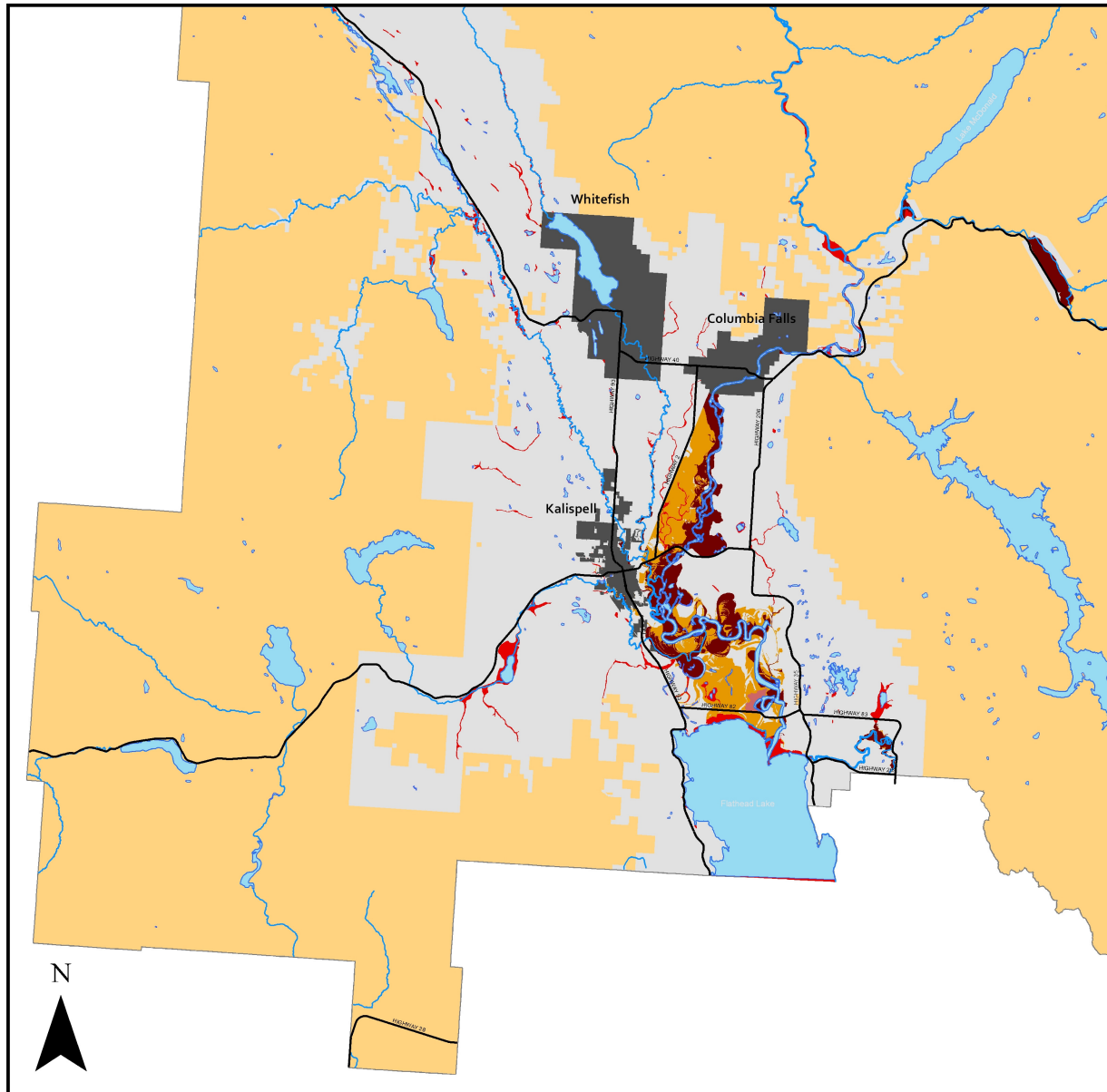


# MAP 2.6 FLOODPLAIN

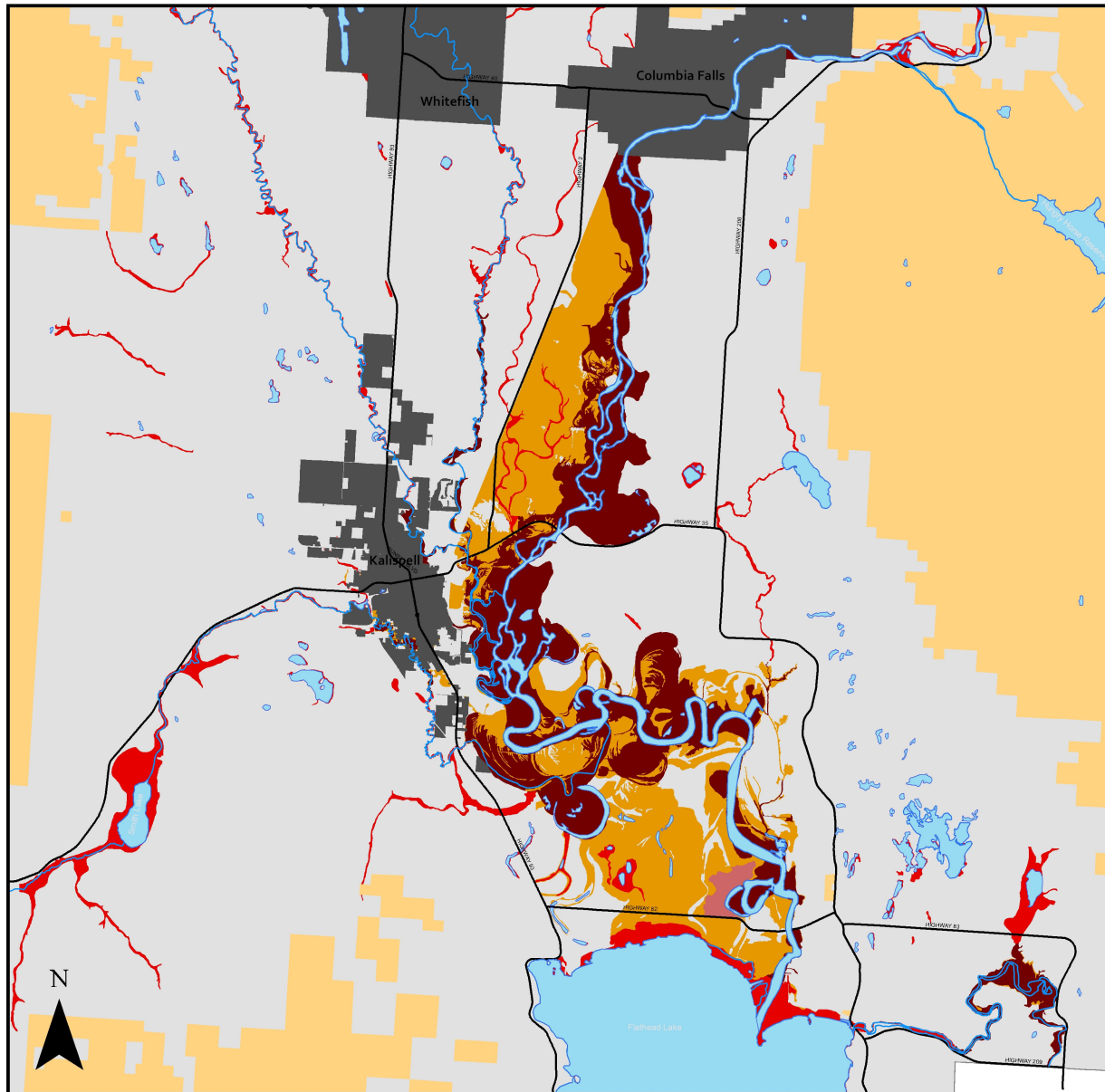
## FLATHEAD COUNTY GROWTH POLICY

### LEGEND

-  Lakes & rivers
-  City Jurisdiction
- Flood Zone**
-  100-Year Floodplain (base flood elevations determined)
-  100-Year Floodplain (no base flood elevation determined)
-  100-Year Floodplain (flood depths 1 to 3 feet)
-  500-Year Floodplain (areas of 0.2% annual chance flood)
-  Flood hazards not determined, but possible
-  Areas outside 500-Year Floodplain










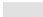


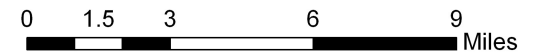


# MAP 2.6 (A) FLOODPLAIN

## FLATHEAD COUNTY GROWTH POLICY

### LEGEND

-  Lakes & rivers
-  City Jurisdiction
- Flood Zone**
-  100-Year Floodplain (base flood elevations determined)
-  100-Year Floodplain (no base flood elevation determined)
-  100-Year Floodplain (flood depths 1 to 3 feet)
-  500-Year Floodplain (areas of 0.2% annual chance flood)
-  Flood hazards not determined, but possible
-  Areas outside 500-Year Floodplain



SOURCE: FLATHEAD COUNTY GIS DEPARTMENT; FEMA FLOOD INSURANCE RATE MAPS  
FILE PATH: S:\FCPZ\LONG RANGE PLANNING\GROWTH POLICY\GROWTH POLICY UPDATE 10-11\MAPPING\CHAPTER 2 - LAND USE

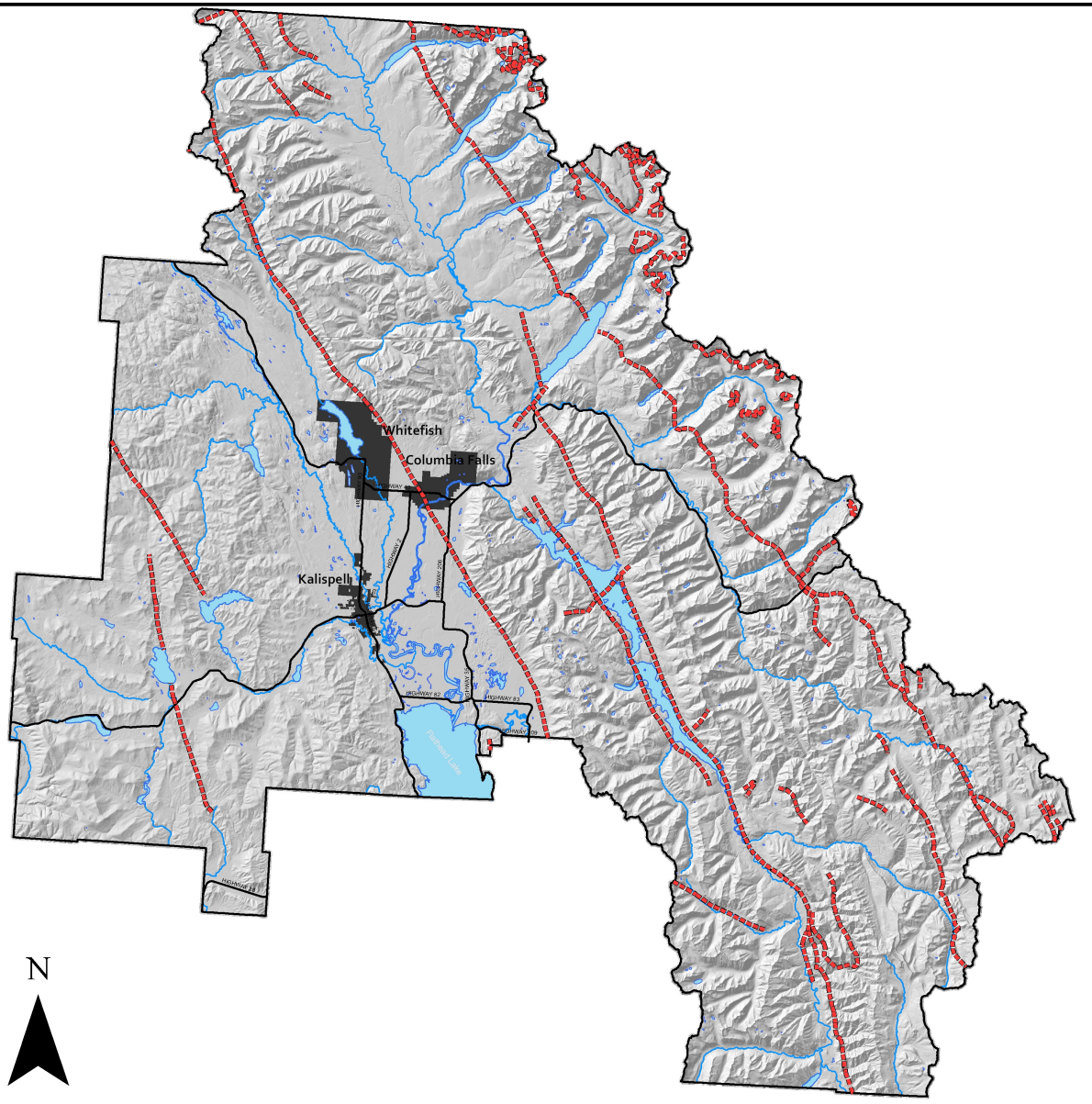
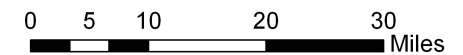
# MAP 2.7

## GEOLOGIC FAULT LINES

### FLATHEAD COUNTY GROWTH POLICY

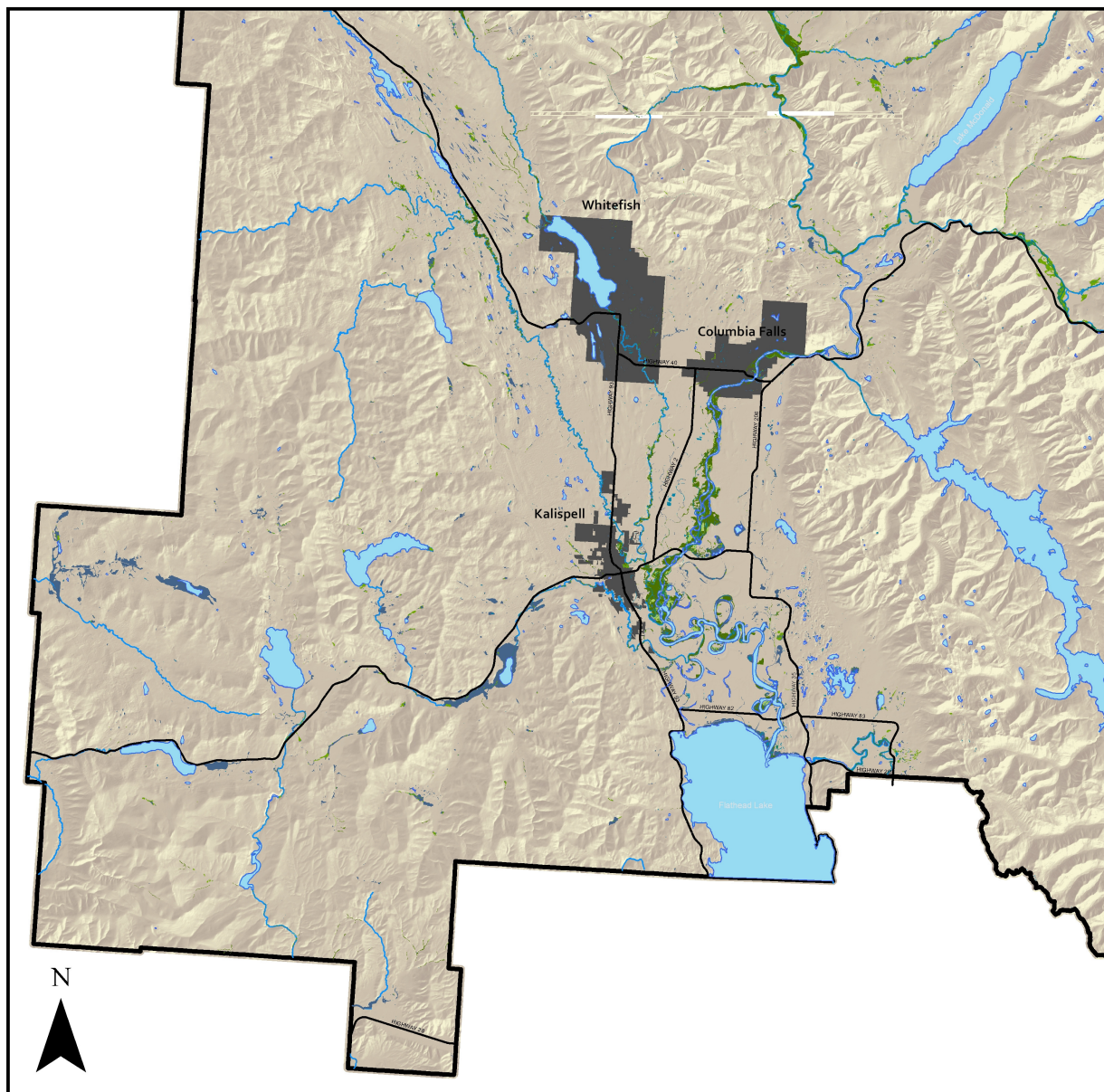
#### LEGEND

- Geologic Fault Lines
- Lakes & rivers
- City Jurisdiction












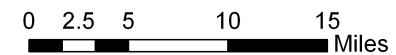
# MAP 2.8 WETLANDS

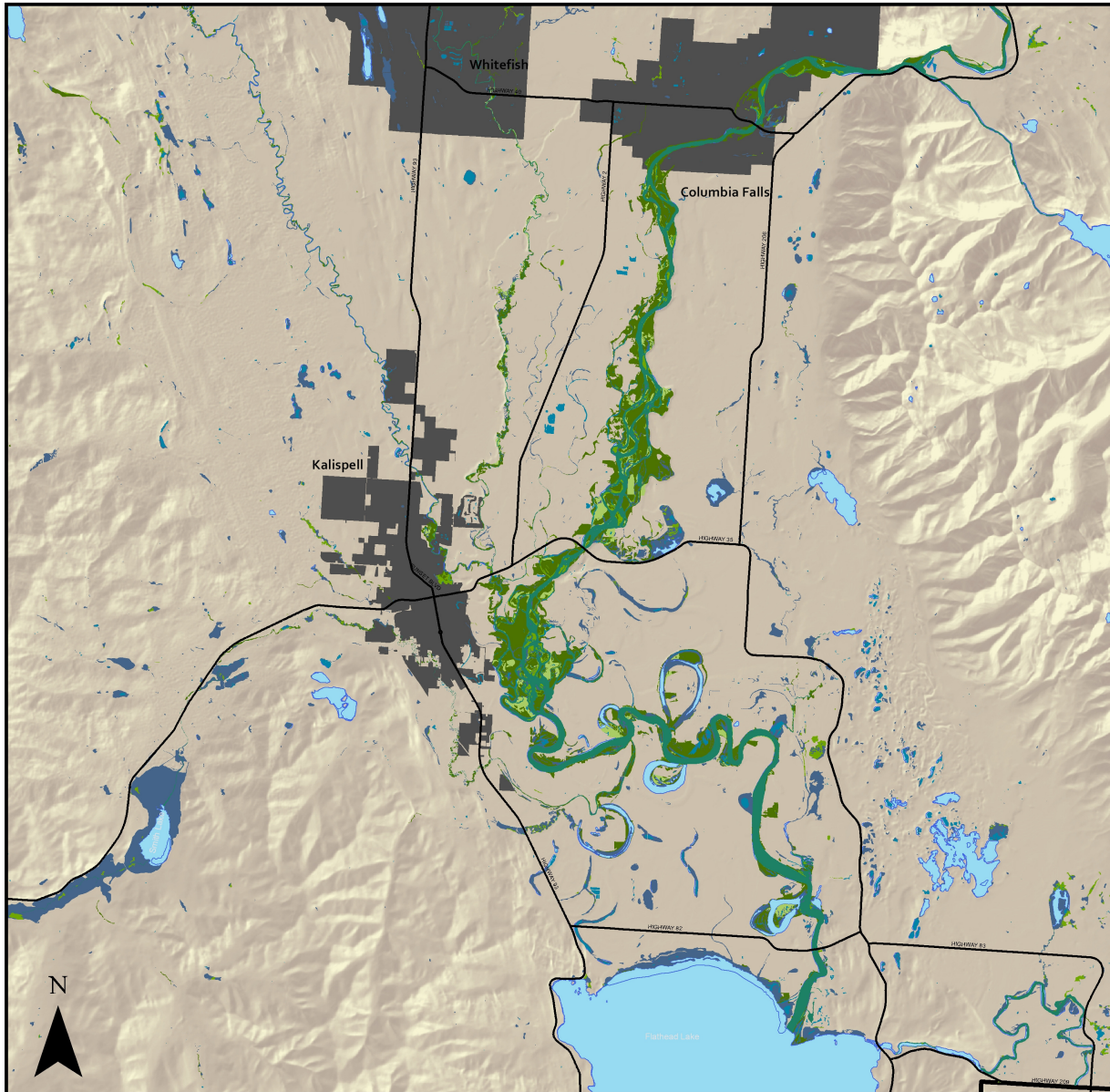
## FLATHEAD COUNTY GROWTH POLICY



### LEGEND

-  Lakes & rivers
-  City Jurisdiction
- Wetland Type**
-  Freshwater Emergent Wetland
-  Freshwater Forested/Shrub Wetland
-  Freshwater Pond
-  Lake
-  Riparian Emergent
-  Riparian Forested-Shrub
-  Riverine

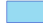










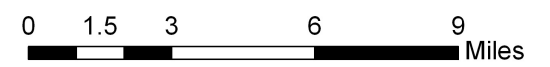


# MAP 2.8 (A) WETLANDS

## FLATHEAD COUNTY GROWTH POLICY

### LEGEND

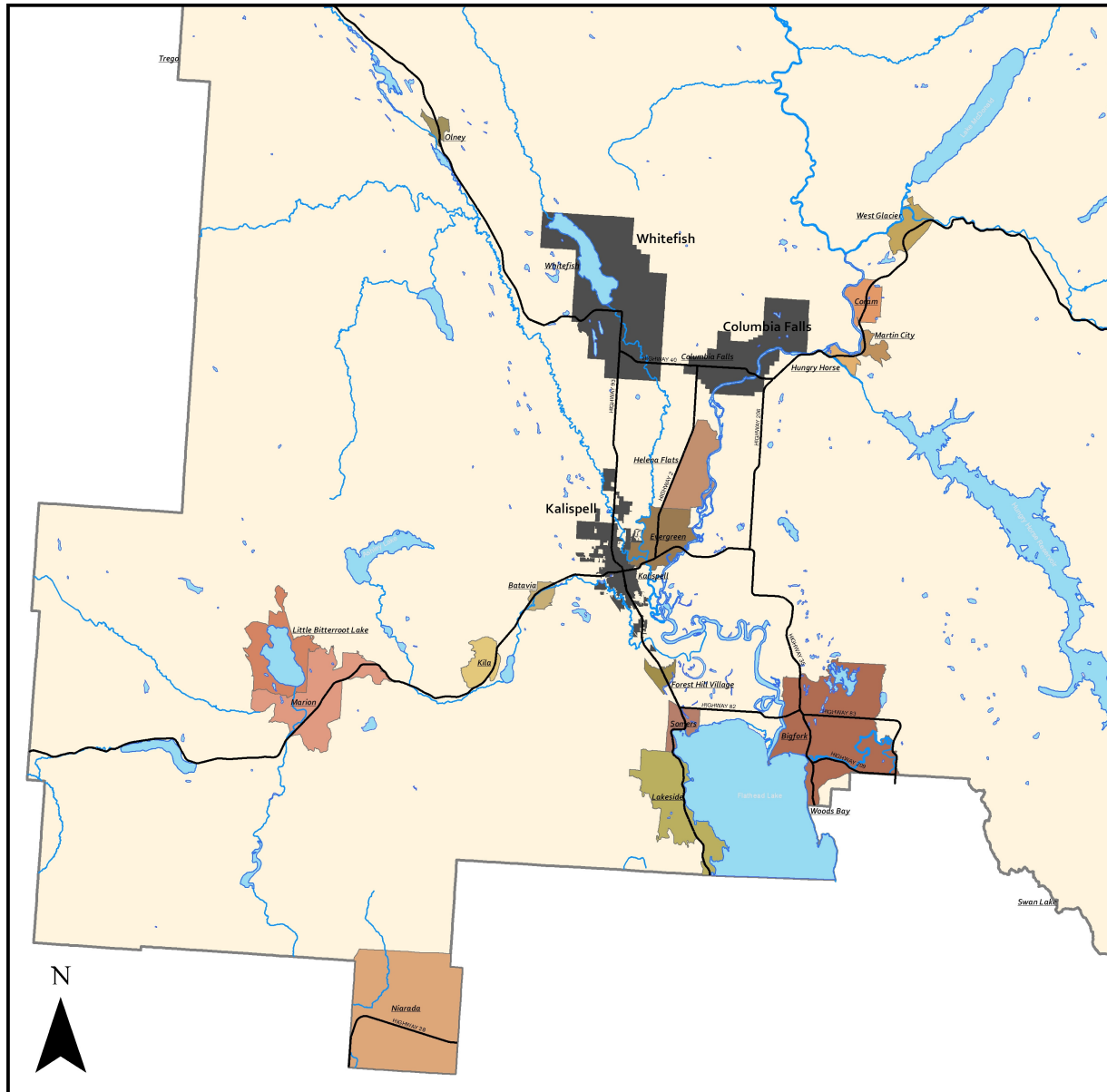
-  Lakes & rivers
-  City Jurisdiction
- Wetland Type**
-  Freshwater Emergent Wetland
-  Freshwater Forested/Shrub Wetland
-  Freshwater Pond
-  Lake
-  Riparian Emergent
-  Riparian Forested-Shrub
-  Riverine



SOURCE: U.S. FISH & WILDLIFE SERVICE; MONTANA NATIONAL HERITAGE PROGRAM (MTHNP); NATIONAL WETLANDS INVENTORY (NWI) FOR MONTANA, 2011  
FILE PATH: S:\FCPZ\LONG RANGE PLANNING\GROWTH POLICY\GROWTH POLICY UPDATE\_10-11\MAPPING\CHAPTER 2 - LAND USE

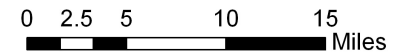
# MAP 3.1 2010 CENSUS DESIGNATED PLACES

## FLATHEAD COUNTY GROWTH POLICY



**LEGEND**

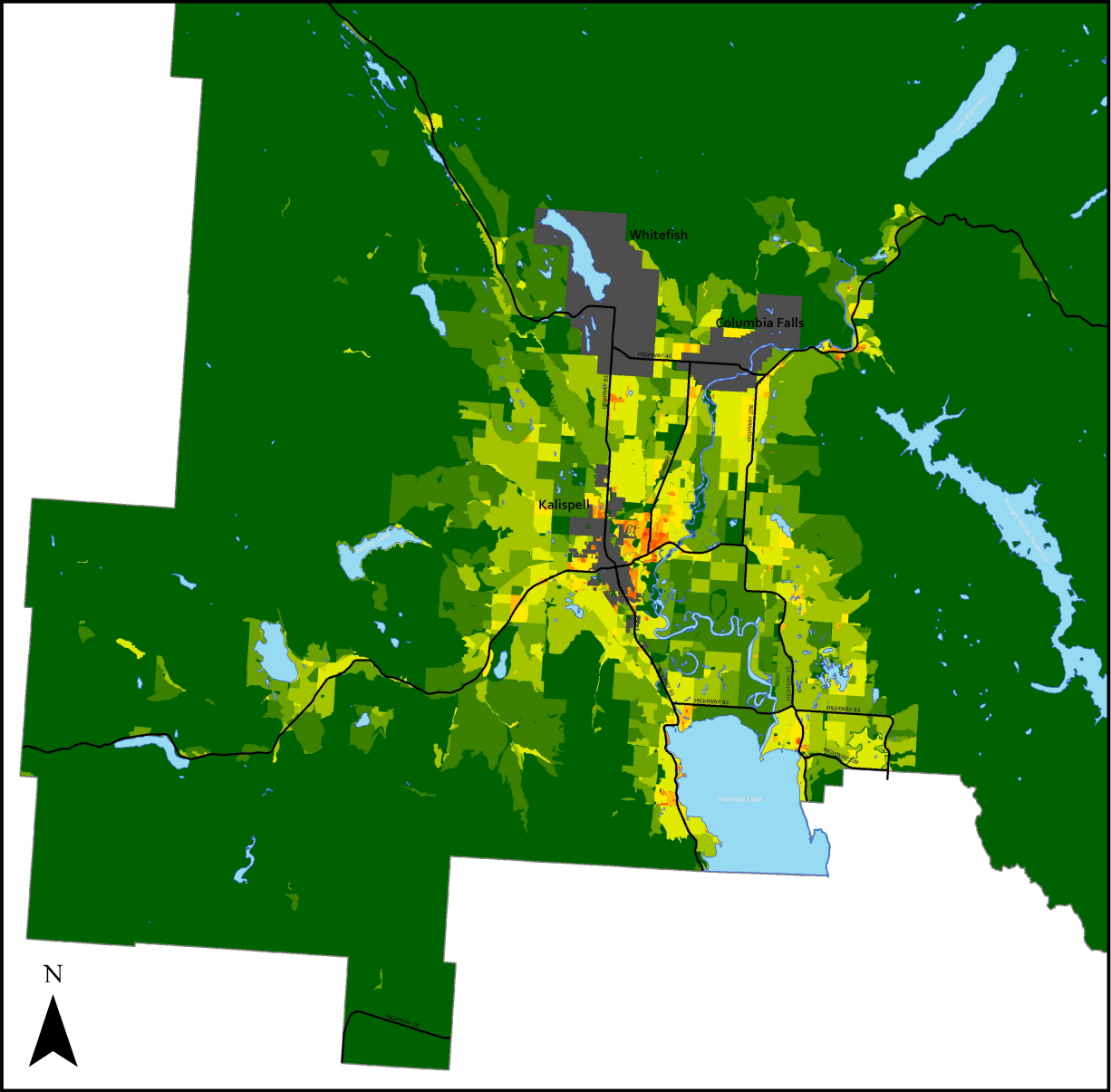
- Lakes & rivers
- City Jurisdiction
- 2010 Census Designated Places**
- Batavia
- Bigfork
- Coram
- Evergreen
- Forest Hill Village
- Helena Flats
- Hungry Horse
- Kila
- Lakeside
- Little Bitterroot Lake
- Marion
- Martin City
- Niara
- Oliney
- Somers
- Swan Lake
- Trego
- West Glacier
- Woods Bay



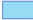











SOURCE: 2010 U.S. BUREAU OF THE CENSUS TIGER/LINE FILE - MT CENSUS PLACES WITH POPULATION DATA  
FILE PATH: S:\NCPZ\LONG RANGE PLANNING\GROWTH POLICY\GROWTH POLICY UPDATE 10-11\MAPPINGS\CHAPTER 3- DEMOGRAPHICS & HOUSING

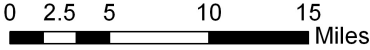
# MAP 3.2 2010 POPULATION PER SQUARE MILE

## FLATHEAD COUNTY GROWTH POLICY



**LEGEND**

-  Lakes & rivers
-  City Jurisdiction
- Population Density (per square mile)**
-  0-10
-  11-25
-  26-50
-  51-100
-  101-250
-  251-500
-  501-1000
-  1001-2500
-  2501-5000
-  Greater than 5000

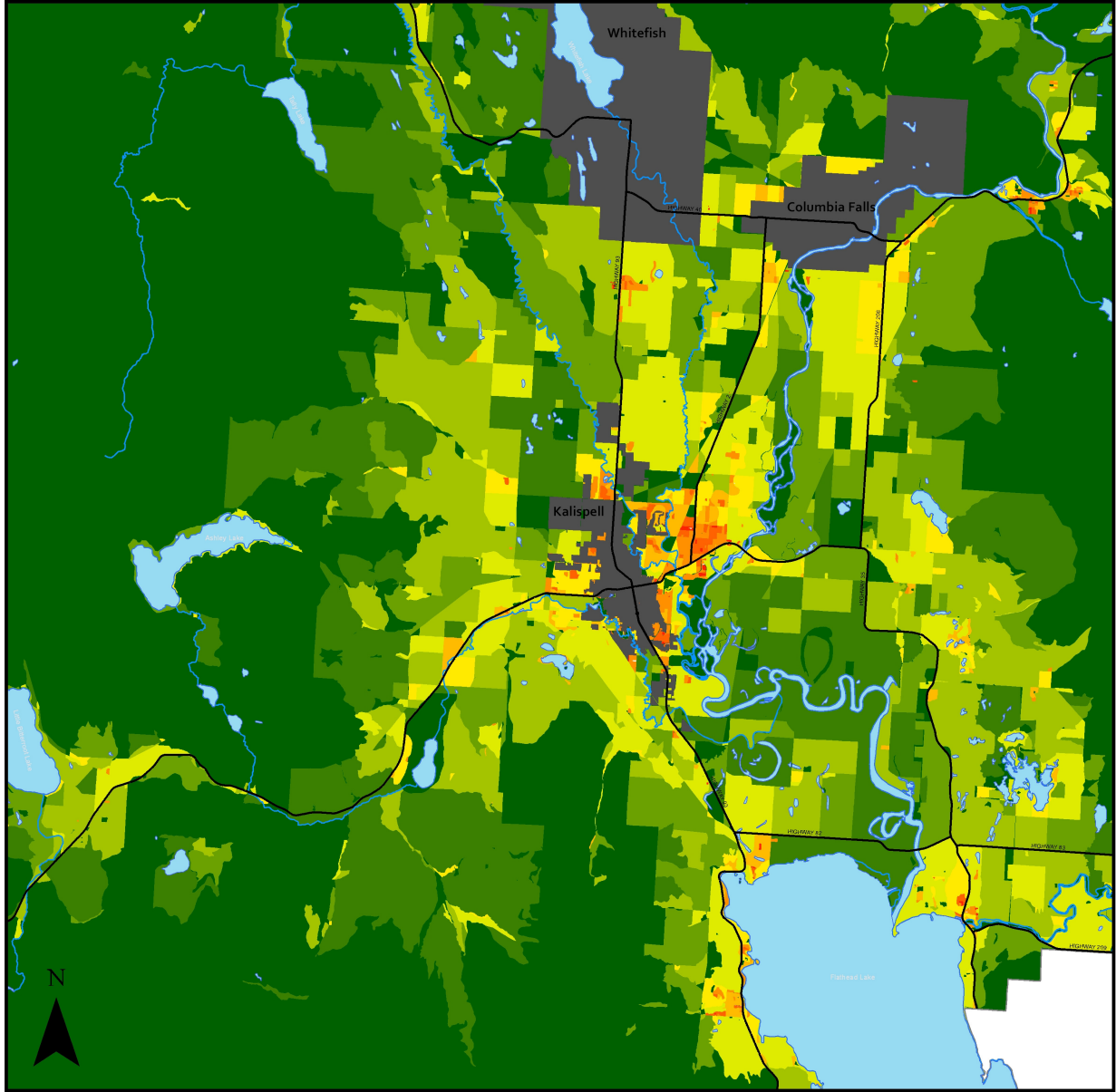


SOURCE: 2010 U.S. BUREAU OF THE CENSUS TIGER/LINE FILE - MT CENSUS BLOCKS WITH POPULATION DATA  
FILE PATH: S:\NCPZ\LONG RANGE PLANNING\GROWTH POLICY\GROWTH POLICY UPDATE 10-11\MAPPING\CHAPTER 3 - DEMOGRAPHICS & HOUSING

# MAP 3.2 (A)

## 2010 POPULATION PER SQUARE MILE

### FLATHEAD COUNTY GROWTH POLICY

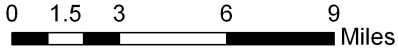


**LEGEND**

- Lakes & rivers
- City Jurisdiction

**Population Density (per square mile)**

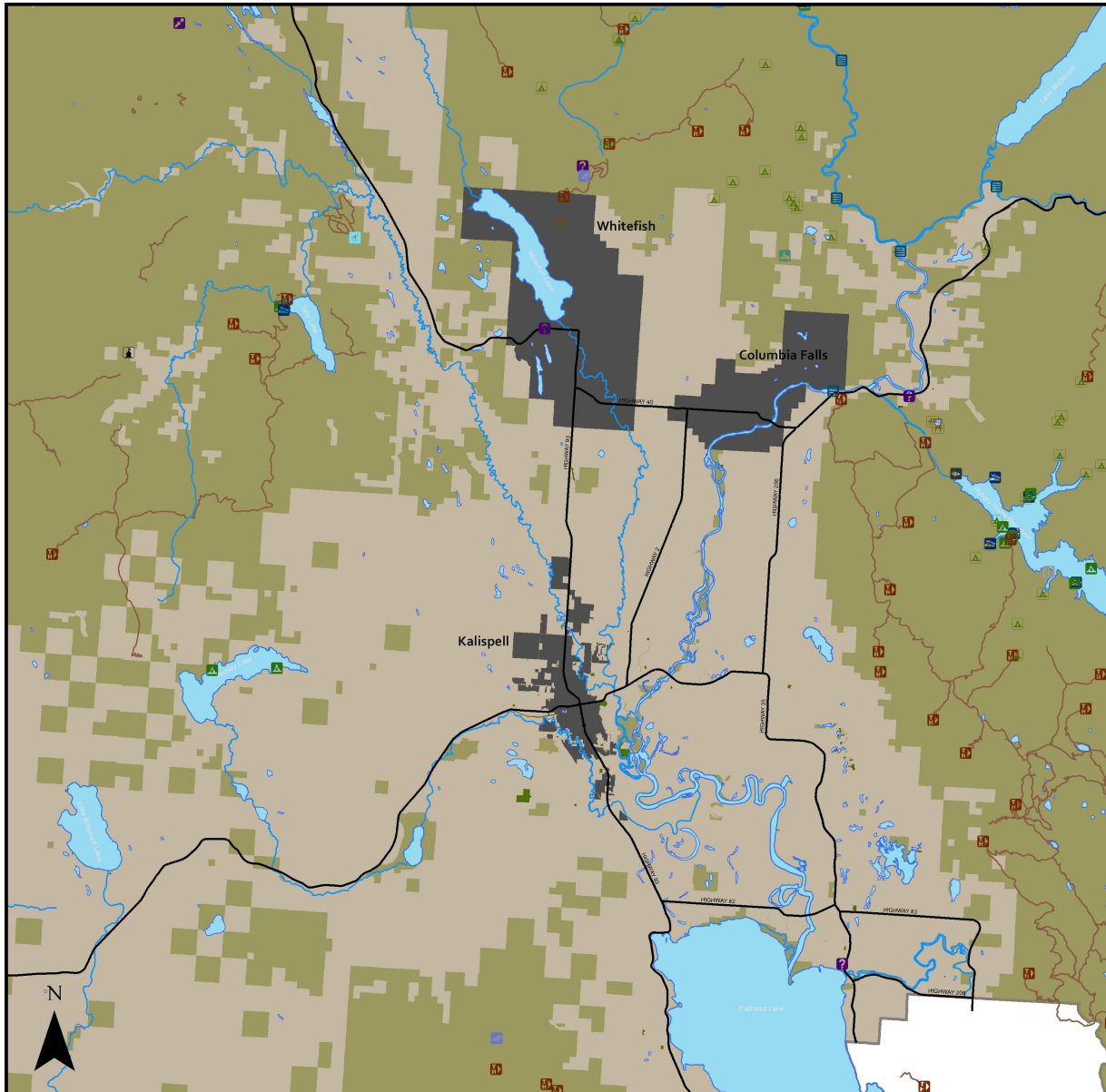
- 0-10
- 11-25
- 26-50
- 51-100
- 101-250
- 251-500
- 501-1000
- 1001-2500
- 2501-5000
- Greater than 5000



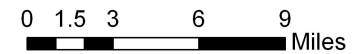
SOURCE: 2010 U.S. BUREAU OF THE CENSUS TIGER/LINE FILE - MT CENSUS BLOCKS WITH FILE PATH: S:\NFCPZ\LONG RANGE PLANNING\GROWTH POLICY\GROWTH POLIC

# MAP 4.1 EXISTING PARK & RECREATION SITES

## FLATHEAD COUNTY GROWTH POLICY



- LEGEND
- Local Street
- City/Countywide
- Public Water
- U.S. Forest Service Trails
- Flathead County Parks
- Recreation Facilities in Flathead County
- Boat Launch
- Camp Facility
- Campground
- Campsite
- PS Shelter
- Parking Access
- Information Site
- Interpretive Site
- Leisure Building
- Observation Pt.
- Fishing Area
- Popcorn Stand
- Play Facilities
- Picnic Area
- Shrine/Community
- Shrine/Devotee
- Historic Site/ Ruins
- Sports Club
- Swimming Area
- Yacht Club
- Work Station

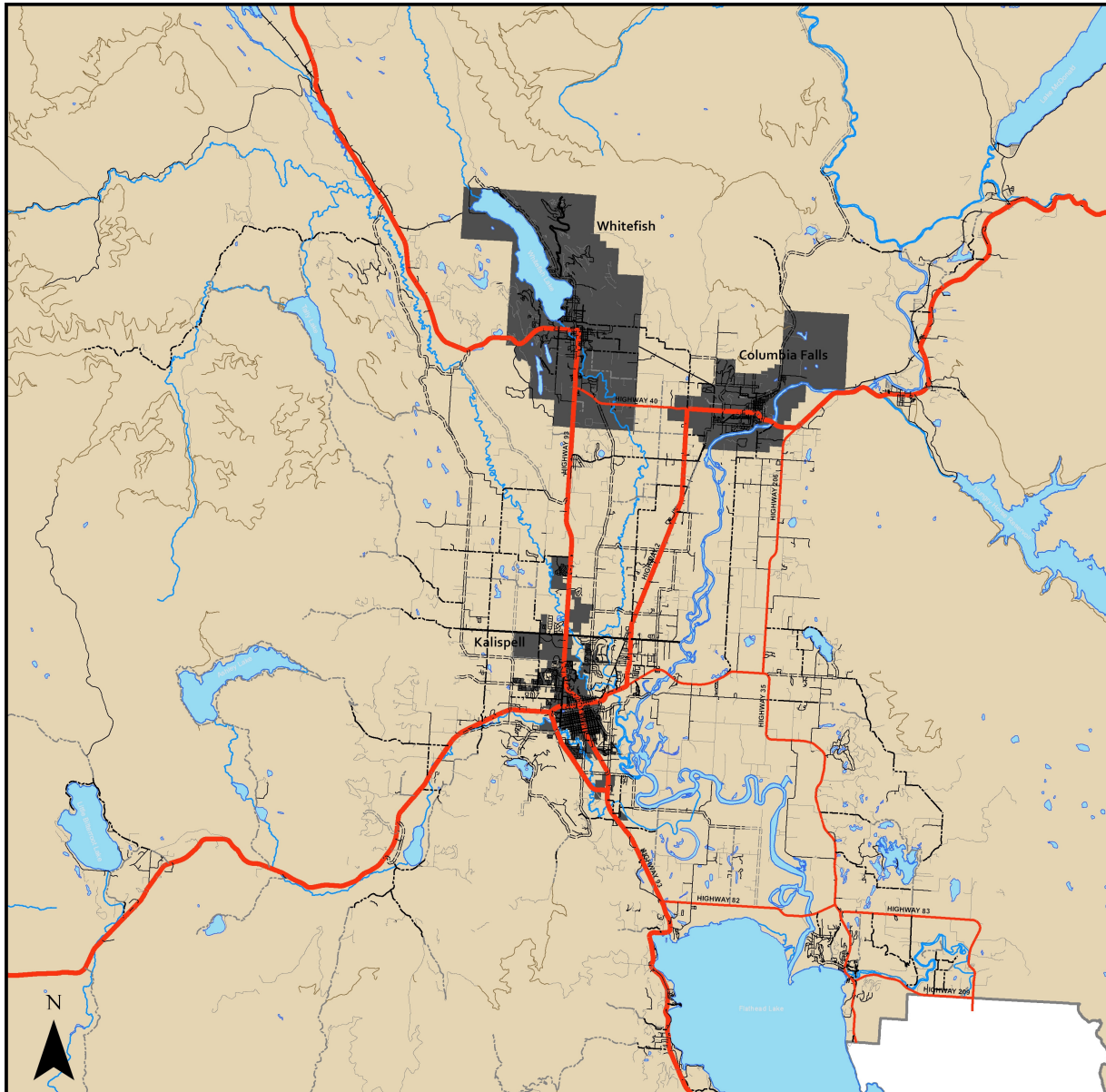


SOURCE: FLATHEAD COUNTY GIS DEPARTMENT  
FILE PATH: S:\FCPZ\LONG RANGE PLANNING\GROWTH POLICY\GROWTH POLICY UPDATE 10-11\MAPPING\CHAPTER 4 - PARKS & RECREATION



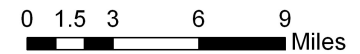
# MAP 6.1 TRANSPORTATION NETWORK

## FLATHEAD COUNTY GROWTH POLICY



### LEGEND

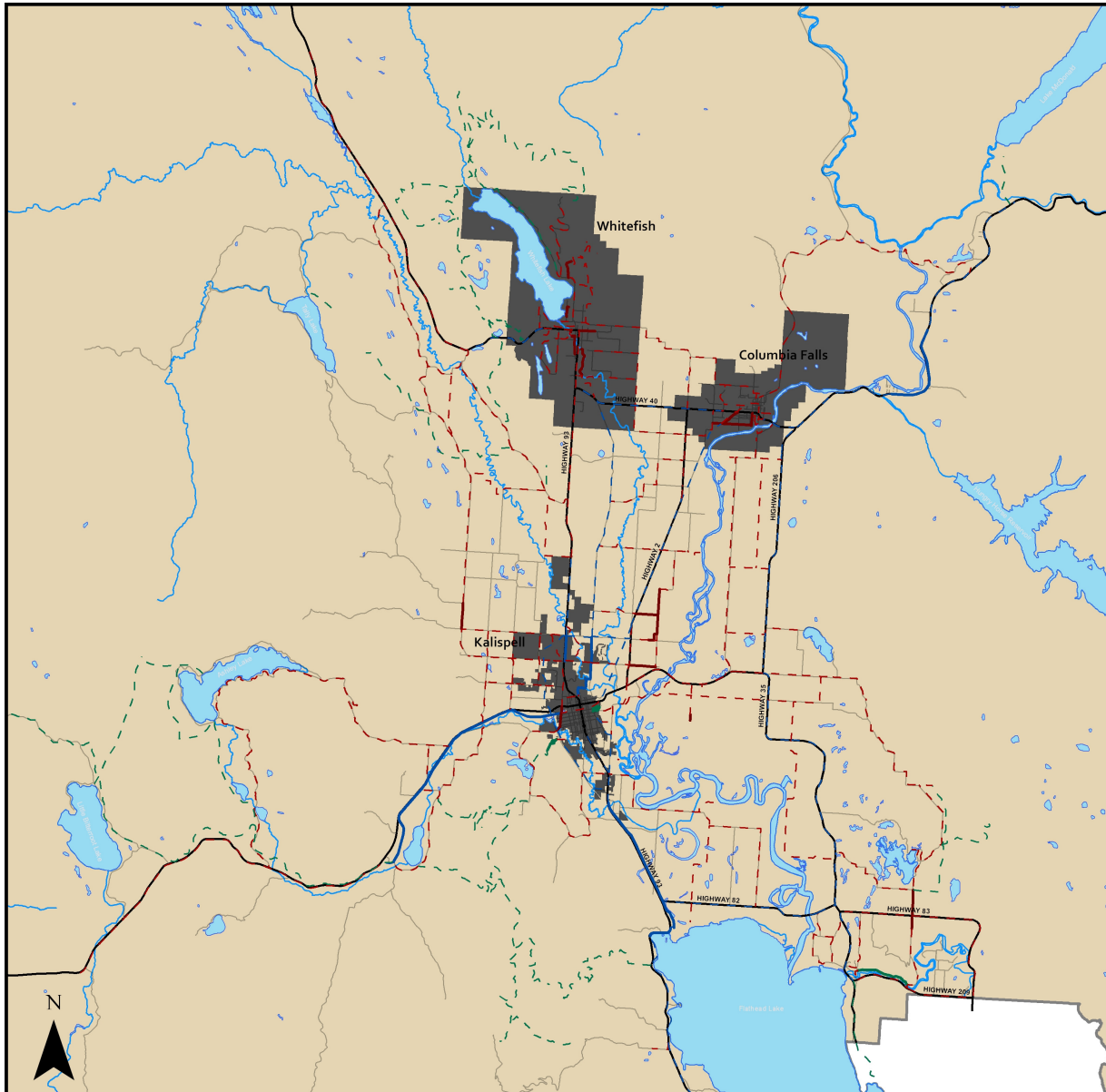
- Lakes & rivers
- City Jurisdiction
- Railroad
- Road Classification & Type**
- US HIGHWAY, PAVED
- MT HIGHWAY, PAVED
- MAJOR ARTERIAL, PAVED
- MINOR ARTERIAL, PAVED
- MINOR ARTERIAL, GRAVEL
- COLLECTOR, PAVED
- COLLECTOR, GRAVEL
- FS ROAD, PAVED
- FS ROAD, GRAVEL
- ROAD, PAVED
- ROAD, GRAVEL









# MAP 6.2

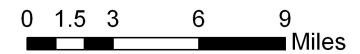
## BIKE & PEDESTRIAN PATHS NETWORK

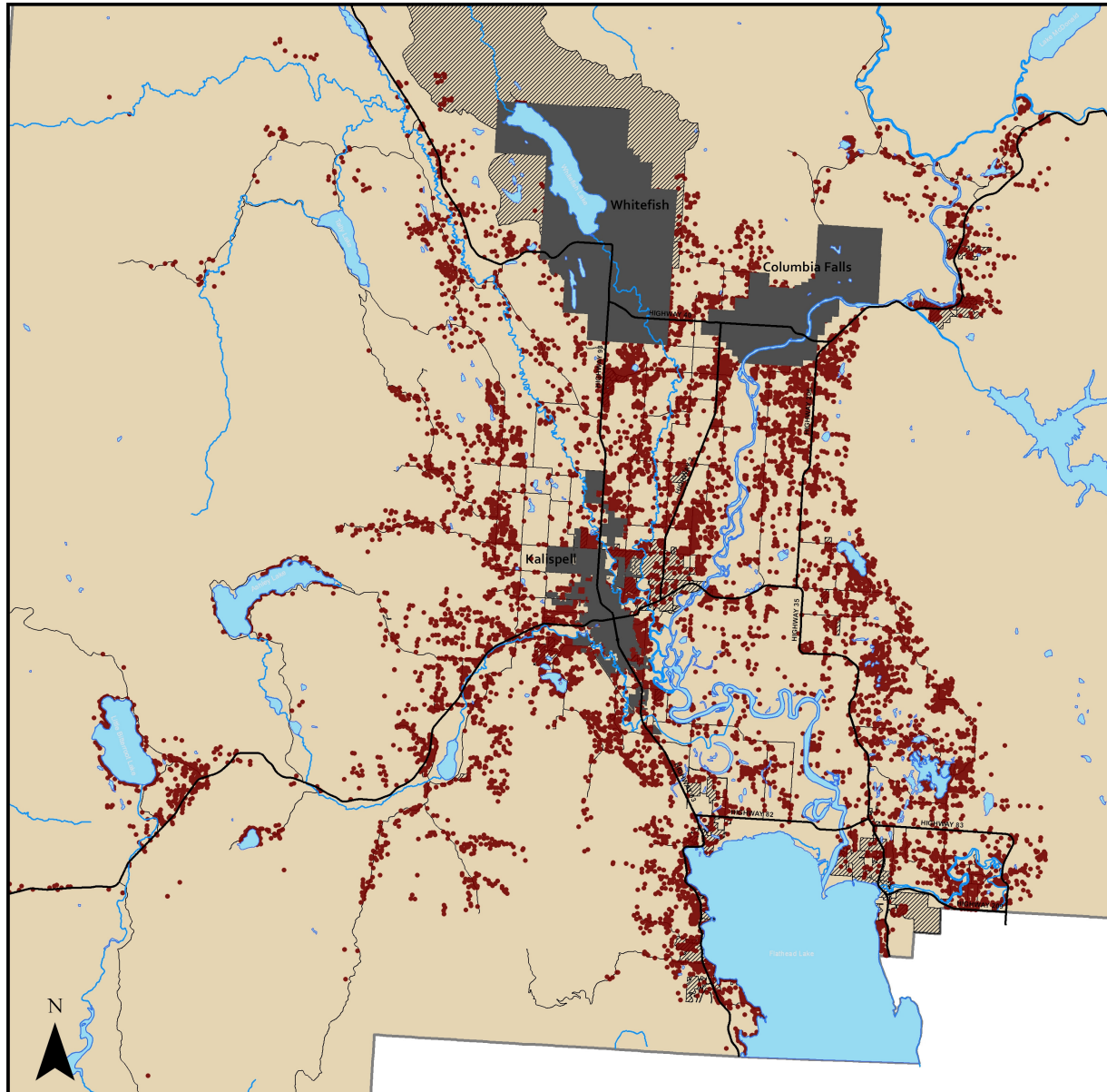
### FLATHEAD COUNTY GROWTH POLICY



#### LEGEND

-  Lakes & rivers
-  City Jurisdiction
-  Major Roads
- Proposed Trails**
  -  Arterial
  -  Connector
  -  Recreational
- Existing Trails**
  -  Arterial
  -  Connector
  -  Recreational





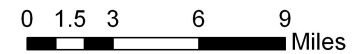
# MAP 7.1

## EXISTING SEPTIC SYSTEMS

### FLATHEAD COUNTY GROWTH POLICY

#### LEGEND

- Lakes & rivers
- City Jurisdiction
- Existing Septic Systems
- Public Water & Sewer District Boundaries

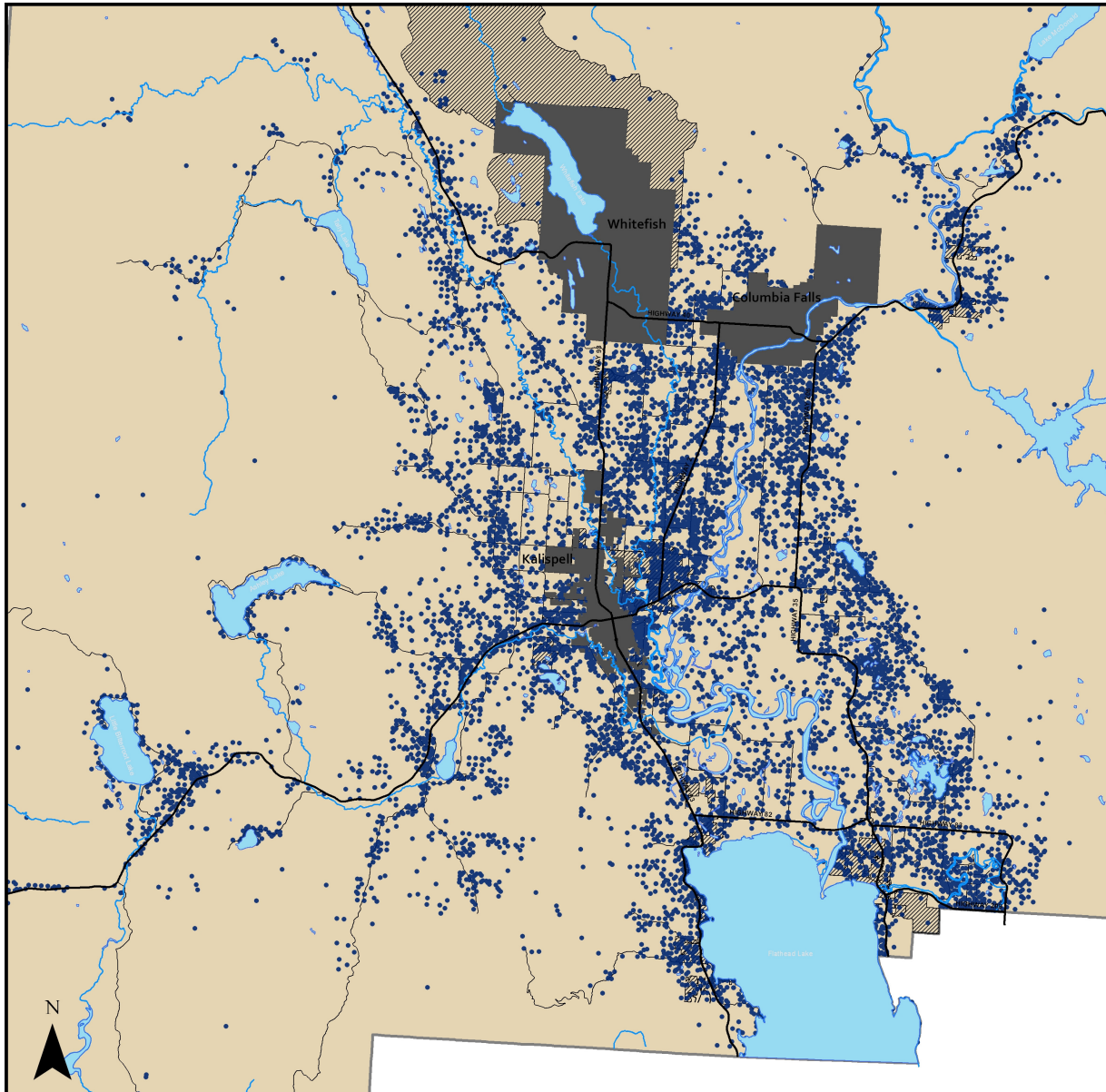


SOURCE: FLATHEAD COUNTY GIS DEPARTMENT; 2010 U.S. BUREAU OF THE CENSUS TIGER/LINE FILE - MT CENSUS BLOCKS  
 FILE PATH: S:\PCPZ\LONG-RANGE PLANNING\GROWTH POLICY\GROWTH POLICY UPDATE 10-11\MAPPING\CHAPTER 7 - PUBLIC FACILITIES & SERVICES

# MAP 7.2

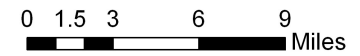
## EXISTING WELLS

### FLATHEAD COUNTY GROWTH POLICY



#### LEGEND

-  Lakes & rivers
-  City Jurisdiction
-  Existing Private Wells
-  Public Water & Sewer District Boundaries

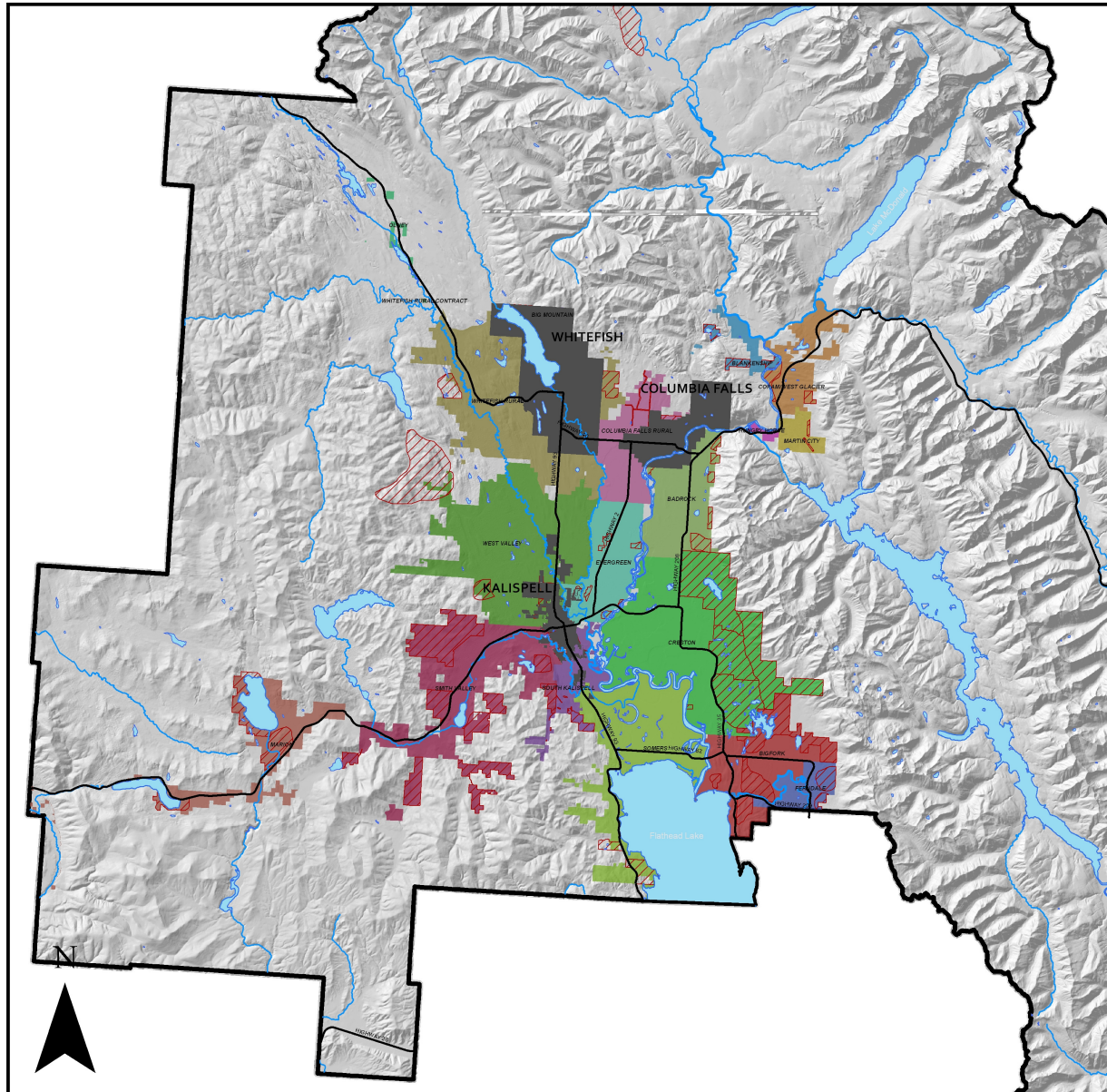


SOURCE: 2011 WELL DATA - GROUNDWATER INFORMATION CENTER (GWIC), MT BUREAU OF MINES & GEOLOGY; 2010 U.S. BUREAU OF THE CENSUS TIGER/LINE FILE - MT CENSUS BLOCKS  
FILE PATH: S:\PCP2\LONG RANGE PLANNING\GROWTH POLICY\GROWTH POLICY UPDATE 10-11\MAPPING\CHAPTER 7 - PUBLIC FACILITIES & SERVICES

# MAP 7.3

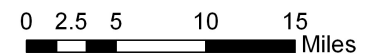
## FIRE DISTRICTS

### FLATHEAD COUNTY GROWTH POLICY



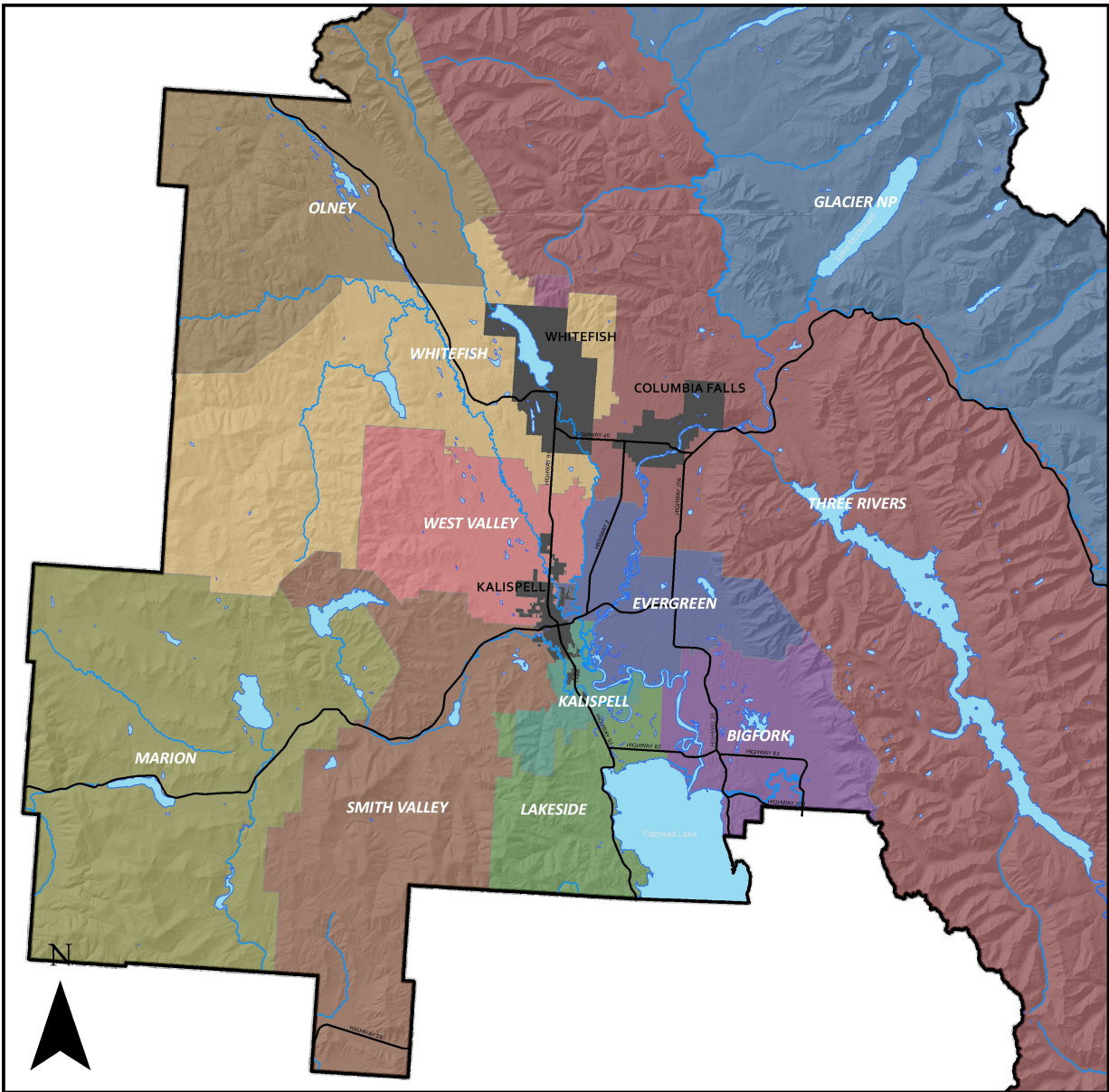
**LEGEND**

- Lakes & rivers
- City Jurisdiction
- Fire District Priority Areas
- Fire Districts**
- BADROCK
- BIG MOUNTAIN
- BIGFORK
- BLANKENSHIP
- COLUMBIA FALLS RURAL
- CORAM/WEST GLACIER
- CRESTON
- EVERGREEN
- FERNDALE
- HUNGRY HORSE
- MARION
- MARTIN CITY
- OLNEY
- SMITH VALLEY
- SOMERS
- SOUTH KALISPELL
- WEST VALLEY
- WHITEFISH RURAL
- WHITEFISH RURAL CONTRACT

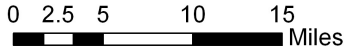


# MAP 7.4 EMERGENCY RESPONSE DISTRICTS

## FLATHEAD COUNTY GROWTH POLICY



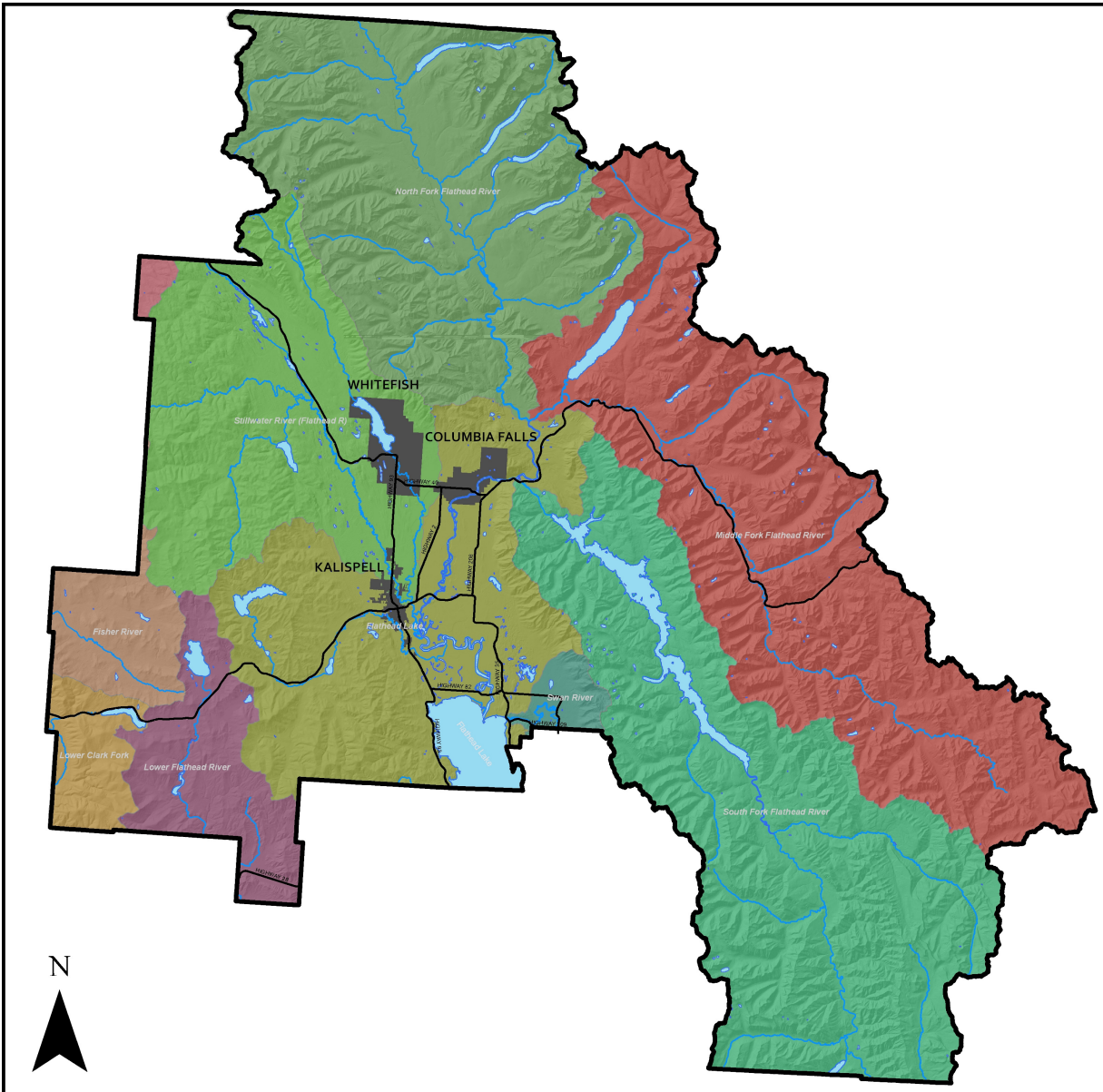
- LEGEND**
- Lakes & rivers
  - City Jurisdiction
  - Emergency Response District**
  - BIG MOUNTAIN
  - BIGFORK
  - EVERGREEN
  - GLACIER NP
  - KALISPELL
  - LAKESIDE
  - MARION
  - OLNEY
  - SMITH VALLEY
  - THREE RIVERS
  - WEST VALLEY
  - WHITEFISH





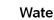










SOURCE: FLATHEAD COUNTY OFFICE OF EMERGENCY SERVICES (EMSOFLFLATHEADCOUNTY12211)  
FILE PATH: S:\PCP\LONG RANGE PLANNING\GROWTH POLICY\GROWTH POLICY UPDATE 10-11\MAPPA\CHAPTER 7- PUBLIC FACILITIES AND SERVICES

# MAP 8.1 FLATHEAD WATERSHED

## FLATHEAD COUNTY GROWTH POLICY



### LEGEND

-  Lakes & rivers
-  City Jurisdiction
- Watershed Sub-Basin**
-  Cut Bank Creek
-  Fisher River
-  Flathead Lake
-  Lower Clark Fork
-  Lower Flathead River
-  Middle Fork Flathead River
-  North Fork Flathead River
-  South Fork Flathead River
-  Stillwater River (Flathead River)
-  Swan River
-  Upper Kootenai River



0 2.5 5 10 15 Miles

# MAP 9.1

## GRAVEL RESOURCES MAP FLATHEAD COUNTY GROWTH POLICY

### TABLE - MDEQ OPEN CUT PERMITS

Permit Number	Operator	Mine Status
105	DEPARTMENT OF TRANSPORTATION	ACTIVE
111	DEPARTMENT OF TRANSPORTATION	ACTIVE
1118	COLUMBIA FALLS INDUSTRIAL PARK	ACTIVE
1129	COLUMBIA FALLS INDUSTRIAL PARK	ACTIVE
112	DEPARTMENT OF TRANSPORTATION	ACTIVE
1125	CLARK ED A	ACTIVE
1133	CRESTON TOPSOIL	ACTIVE
114	DEPARTMENT OF TRANSPORTATION	ACTIVE
1147	DEPARTMENT OF NATURAL RESOURCES STILLWATER UNIT	ACTIVE
1148	DEPARTMENT OF NATURAL RESOURCES STILLWATER UNIT	ACTIVE
115	DEPARTMENT OF TRANSPORTATION	ACTIVE
1151	DEPARTMENT OF NATURAL RESOURCES STILLWATER UNIT	ACTIVE
1152	DEPARTMENT OF NATURAL RESOURCES STILLWATER UNIT	ACTIVE
1160	DEPARTMENT OF NATURAL RESOURCES STILLWATER UNIT	ACTIVE
1161	DEPARTMENT OF NATURAL RESOURCES STILLWATER UNIT	ACTIVE
1162	DEPARTMENT OF NATURAL RESOURCES STILLWATER UNIT	ACTIVE
1163	DEPARTMENT OF NATURAL RESOURCES STILLWATER UNIT	ACTIVE
1164	DEPARTMENT OF NATURAL RESOURCES STILLWATER UNIT	ACTIVE
1181	ESLUK PAUL	ACTIVE
12	ANDERSON LLOYD K	INACTIVE
1207	FH STOLTZE LAND AND LUMBER COMPANY	ACTIVE
126	DEPARTMENT OF TRANSPORTATION	ACTIVE
127	DEPARTMENT OF TRANSPORTATION	ACTIVE
1276	GOOSE BAY EQUIPMENT INC	ACTIVE
1277	GOOSE BAY EQUIPMENT INC	ACTIVE
128	DEPARTMENT OF TRANSPORTATION	ACTIVE
1281	GLACIER HORSE RANCH LLC	INACTIVE
129	DEPARTMENT OF TRANSPORTATION	ACTIVE
2298	GRIZZLY LOGGING AND LUMBER LLC DBA GRIZZLY GRAVEL PRODUCTS	ACTIVE
13	WAGONERS SAND AND GRAVEL	ACTIVE
130	DEPARTMENT OF TRANSPORTATION	ACTIVE
1305	HANSON NIEMEL	ACTIVE
1315	HAMILTON HOWARD D	ACTIVE
1320	HANSON NORMAN K	ACTIVE
1321	HANSON NORMAN K	INACTIVE
1327	HELWAN SAND AND GRAVEL INC	ACTIVE
1383	KELLER LES	ACTIVE
1387	KLEMPFEL JOE AND RON	ACTIVE
1388	KLEMPFEL JOE AND RON	ACTIVE
1407	KNIFE RIVER	ACTIVE
1408	KNIFE RIVER	ACTIVE
1410	KNIFE RIVER	ACTIVE
1411	KNIFE RIVER	ACTIVE
1416	KNIFE RIVER	ACTIVE
142	DEPARTMENT OF TRANSPORTATION	ACTIVE
1422	KRUEGER GARY	ACTIVE
1424	LEIGHTY BROS CONSTRUCTION LLC	ACTIVE
1432	LIHC INC	ACTIVE
1440	LASALLE SAND AND GRAVEL	ACTIVE
1478	MANN LAKES EAST	ACTIVE
1494	MURPHY'S EXCAVATING INC	ACTIVE
1520	OSHN BRUSLER	ACTIVE
1527	PLUM CREEK TIMBERLANDS LP	ACTIVE
1552	POTTS SYLV	INACTIVE
1555	PUMCO INC	ACTIVE
1559	RIVERSIDE CONTRACTING INC	ACTIVE
1640	RUSSELL KIMBERLY J	INACTIVE
1645	SCHELLINGER CONSTRUCTION COMPANY	ACTIVE
1648	SCHELLINGER CONSTRUCTION COMPANY	ACTIVE
1650	SCHELLINGER CONSTRUCTION COMPANY	ACTIVE
1658	SCHELLINGER CONSTRUCTION COMPANY	ACTIVE
1659	SCHELLINGER CONSTRUCTION COMPANY	ACTIVE
1661	SCHELLINGER CONSTRUCTION COMPANY	INACTIVE
1668	SCHELLINGER CONSTRUCTION COMPANY	ACTIVE
1669	SCHELLINGER CONSTRUCTION COMPANY	ACTIVE
1679	SCHLEGLER AND SONS CONTRACTOR INC	ACTIVE
1686	SPOKIE GRANT	ACTIVE
1696	SPOKIE GRANT	ACTIVE
1713	SPOKIE ROBERT	ACTIVE
1714	STREET ROBIN	ACTIVE
1717	STUBAK PROPERTIES	ACTIVE
1719	STUPAK JAMES	ACTIVE
1720	STW PARTNERSHIP	ACTIVE
1721	SUDAN INC	ACTIVE
1724	SWIFT CREEK CABINS LLC	ACTIVE
1725	SCHWARZ CONSTRUCTION	ACTIVE
1726	CHARLARD STEVE S	ACTIVE
1731	TUNGSTEN HOLDINGS INC	ACTIVE
1733	TAMARACK HOLDINGS LLC	ACTIVE
1734	THONIBERRY RONALD AND ESTHER	ACTIVE
1743	TIMBERLINE READY MIX	ACTIVE
1753	TURNER WAYNE	ACTIVE
1754	TUTVEDT BRUCE	ACTIVE
1757	US FISH AND WILDLIFE SERVICE	ACTIVE
1769	WAGAR JOE	ACTIVE
1783	WOODRONG INC	ACTIVE
1788	WHITE ROCK AGGREGATE LLC	ACTIVE
1797	WAGONERS SAND AND GRAVEL	ACTIVE
1807	SCHELLINGER CONSTRUCTION COMPANY	ACTIVE
1812	SCHELLINGER CONSTRUCTION COMPANY	INACTIVE
1821	PLUM CREEK TIMBERLANDS LP	DENIED
1846	WHITE ROCK AGGREGATE LLC	ACTIVE
1873	KNIFE RIVER	PENDING
1886	JTL GROUP INC - KAUSPEL	INACTIVE
1930	WELLS LAURENCE G	DENIED
1946	SCHELLINGER CONSTRUCTION COMPANY	ACTIVE
1991	DEPARTMENT OF TRANSPORTATION	ACTIVE
1992	GRIZZLY LOGGING AND LUMBER LLC DBA GRIZZLY GRAVEL PRODUCTS	ACTIVE
2	PACK AND COMPANY	INACTIVE
2006	ESLUK PAUL	PENDING
2011	WAGONERS SAND AND GRAVEL	ACTIVE
24	DOANE SON	ACTIVE
25	ROBINSON SAND AND GRAVEL	ACTIVE
30	CITY OF WHITEFISH	ACTIVE
305	JTL GROUP DBA MELBOY AND WILKEN	ACTIVE
305	DOTTEN NEIL	ACTIVE
38	NORVEL LINDA EVART	ACTIVE
405	PLUM CREEK TIMBERLANDS LP	ACTIVE
500	PLUM CREEK TIMBERLANDS LP	ACTIVE
515	FLATHEAD COUNTY ROAD DEPARTMENT	ACTIVE
516	FLATHEAD COUNTY ROAD DEPARTMENT	ACTIVE
517	FLATHEAD COUNTY ROAD DEPARTMENT	ACTIVE
518	FLATHEAD COUNTY ROAD DEPARTMENT	ACTIVE
519	FLATHEAD COUNTY ROAD DEPARTMENT	ACTIVE
520	FLATHEAD COUNTY ROAD DEPARTMENT	ACTIVE
521	FLATHEAD COUNTY ROAD DEPARTMENT	ACTIVE
522	FLATHEAD COUNTY ROAD DEPARTMENT	ACTIVE
523	FLATHEAD COUNTY ROAD DEPARTMENT	ACTIVE
524	FLATHEAD COUNTY ROAD DEPARTMENT	ACTIVE
525	FLATHEAD COUNTY ROAD DEPARTMENT	ACTIVE
526	FLATHEAD COUNTY ROAD DEPARTMENT	ACTIVE
54	JTL GROUP DBA MELBOY AND WILKEN	ACTIVE
545	MISSION VALLEY CONCRETE	ACTIVE
55	PACK AND COMPANY	ACTIVE
650	LIHC INC	ACTIVE
673	THONIBERRY RONALD AND ESTHER	ACTIVE
702	BEASLEY JOE	ACTIVE
731	BROWNN PAMELA	ACTIVE
734	RAMBO PRODUCTS LLC	ACTIVE
83	HAMILTON HOWARD D	ACTIVE
83	WILLIAM WILLIAM	ACTIVE
83	SPOKIE ROBERT	INACTIVE

### TABLE - MDEQ SMALL MINER EXCLUSION STATEMENTS

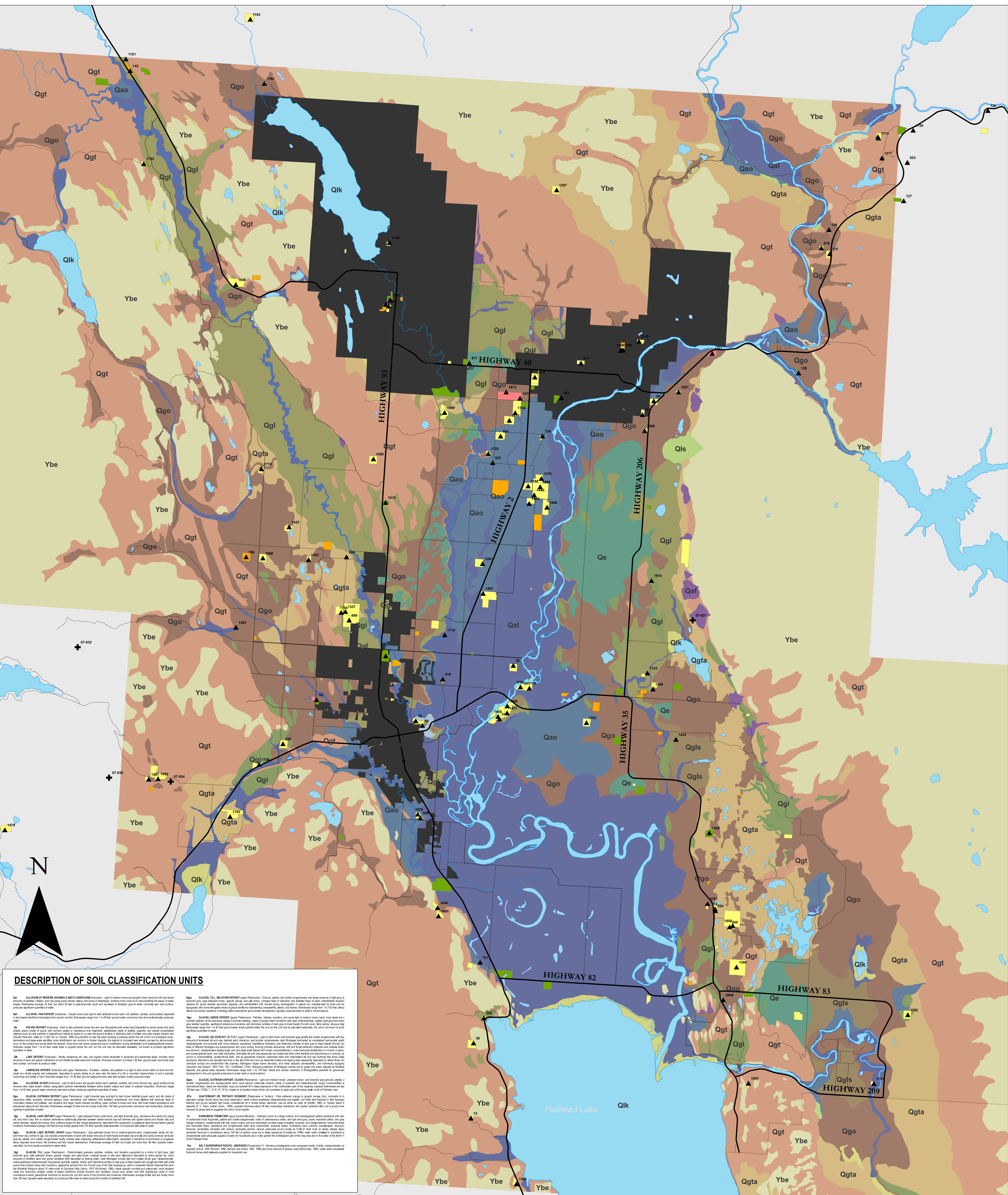
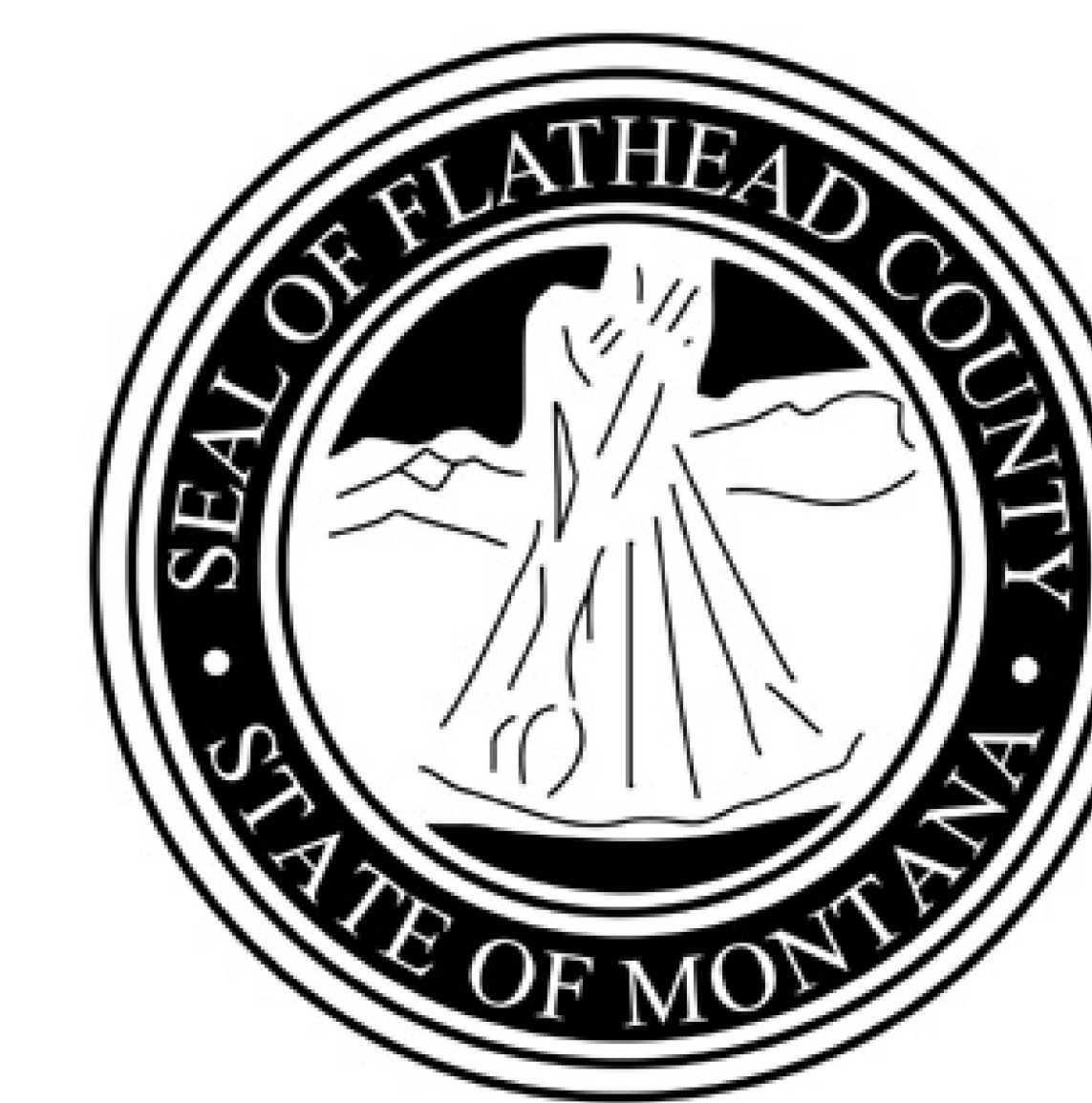
PROGRAM	COMPANY NAME	OPERATION TYPE	MINERAL	STATUS
02-013	SHUTTERBARK BRYAN K	OPEN PIT	TALUS	SHUTDOWN
02-021	JANUSZ WILLIAM	OPEN PIT	HARD ROCK	ACTIVE
02-037	JANUSZ WILLIAM	POCKET PINDER	REF FAN ROCK	ACTIVE
02-040	WAGGONERS SAND AND GRAVEL INC	POCKET PINDER	ROCK	ACTIVE
02-048	GRIZZLY LOGGING & LUMBER CO	POCKET PINDER	ROCK	ACTIVE
02-052	MONTANA QUARRY PERMIT	OPEN PIT	ROCK	ACTIVE
02-056	ANDERSON MASSIMOTTI INC	OPEN PIT	ORIGINATED ROCK	ACTIVE

### TABLE - MDEQ OPERATING PERMITS, HARD ROCK

PROGRAM	MINE NAME	OPERATION TYPE	MINERAL	STATUS
02-013	SHUTTERBARK BRYAN K	OPEN PIT	TALUS	SHUTDOWN
02-014	DOANE ROBERT W	OPEN PIT	HARDWARE/REINFORCING W/ST LAUREN	ACTIVE
02-037	JANUSZ WILLIAM	POCKET PINDER	HARD ROCK	ACTIVE
02-040	WAGGONERS SAND AND GRAVEL INC	POCKET PINDER	ROCK	ACTIVE
02-052	MONTANA QUARRY PERMIT	OPEN PIT	ROCK	ACTIVE

### Legend

- ⊕ Small Miner Exclusion Statements - Hard Rock
- ▲ Existing MDEQ Open-Cut Permits
- Rivers, Lakes & Streams
- Gravel Pits: Flathead County Inventory (thru 2006)**
- ACTIVE
- INACTIVE
- RECLAIMED
- UNKNOWN
- City Planning Jurisdictions/Interlocal Agreement Areas
- Surficial Soils: MT Bureau of Mines and Geology**
- QTs - Quaternary or Tertiary Sediment
- Qaf - Alluvial Fan Deposit
- Qal - Alluvium of Modern Channels and Floodplains
- Qao - Alluvium, Older
- Qe - Eolian Deposit
- Qge - Glacial Esker Deposit
- Qgi - Glacial Ice Contact Deposit
- Qgl - Glacial Lake Deposit
- Qgls - Glacial Lake Deposit, Sandy
- Qgo - Glacial Outwash Deposit
- Qgoo - Glacial Outwash Deposit, Older
- Qgt - Glacial Till
- Qgta - Glacial Till, Ablation Deposit
- Qlk - Lake Deposit
- Qls - Landslide Deposit
- Qoa - Unidentified
- Tk - Kishenehn Formation
- Ybe - Belt Supergroup Rocks, Undivided



### DESCRIPTION OF SOIL CLASSIFICATION UNITS

**Qgt - ALLUVIUM OF MODERN CHANNELS AND FLOODPLAINS** - Light to medium brown to dark brown, silty to sandy, silty loam to silty clay loam. Commonly associated with recent channel deposits. Silt and clay content increases with distance from the channel. Clayey to silty loam to silty clay loam. Commonly associated with recent channel deposits. Silt and clay content increases with distance from the channel. Clayey to silty loam to silty clay loam. Commonly associated with recent channel deposits. Silt and clay content increases with distance from the channel. Clayey to silty loam to silty clay loam.

**Qgo - ALLUVIUM, OLDER** - Light to medium brown to dark brown, silty to sandy, silty loam to silty clay loam. Commonly associated with older channel deposits. Silt and clay content increases with distance from the channel. Clayey to silty loam to silty clay loam. Commonly associated with older channel deposits. Silt and clay content increases with distance from the channel. Clayey to silty loam to silty clay loam.

**Qgl - GLACIAL LAKE DEPOSIT** - Light to medium brown to dark brown, silty to sandy, silty loam to silty clay loam. Commonly associated with glacial lake deposits. Silt and clay content increases with distance from the channel. Clayey to silty loam to silty clay loam. Commonly associated with glacial lake deposits. Silt and clay content increases with distance from the channel. Clayey to silty loam to silty clay loam.

**Qgta - GLACIAL TILL, ABLATION DEPOSIT** - Light to medium brown to dark brown, silty to sandy, silty loam to silty clay loam. Commonly associated with glacial till, ablation deposits. Silt and clay content increases with distance from the channel. Clayey to silty loam to silty clay loam. Commonly associated with glacial till, ablation deposits. Silt and clay content increases with distance from the channel. Clayey to silty loam to silty clay loam.

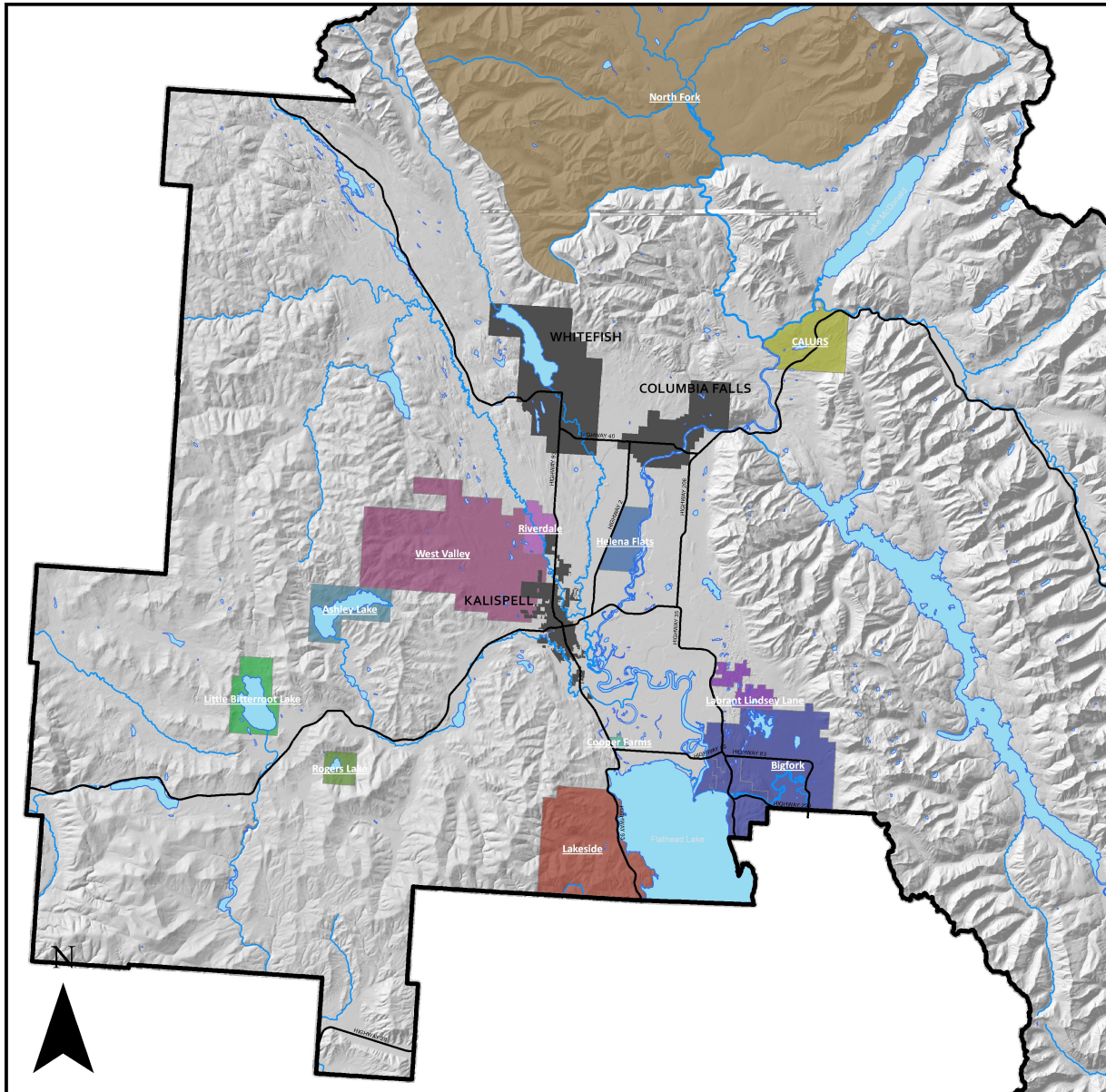


# MAP 11.1

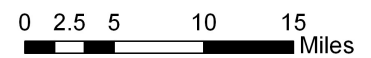
## NEIGHBORHOOD

## PLANS

### FLATHEAD COUNTY GROWTH POLICY



- LEGEND**
- Lakes & rivers
  - City Jurisdiction
  - Neighborhood Plan**
  - Ashley Lake
  - Bigfork
  - CALURS
  - Cooper Farms
  - Helena Flats
  - Labrant Lindsey Lane
  - Lakeside
  - Little Bitterroot Lake
  - North Fork
  - Riverdale
  - Rogers Lake
  - West Valley



SOURCE: FLATHEAD COUNTY GIS DEPARTMENT  
FILE PATH: G:\FCPZ\LONG RANGE PLANNING\GROWTH POLICY\GROWTH POLICY UPDATE 10-11\MAPPINGS\CHAPTER 11 - NEIGHBORHOOD PLANS