
MONDAY, JUNE 11, 2012

The Board of County Commissioners met in continued session at 8:00 o'clock A.M. Chairman Lauman, Commissioner Scott and Holmquist, and Clerk Robinson were present.

NO MEETINGS SCHEDULED

At 5:00 o'clock P.M., the Board continued the session until 8:00 o'clock A.M. on June 12, 2012.

TUESDAY, JUNE 12, 2012

The Board of County Commissioners met in continued session at 8:00 o'clock A.M. Chairman Lauman, Commissioner Scott and Holmquist, and Clerk Robinson were present.

Chairman Lauman opened public comment on matters within the Commissions' Jurisdiction, no one present to speak, Chairman Lauman closed the public comment period.

OPEN BIDS: 2012 CRACK SEALING PROJECT/ ROAD DEPT.

[9:30:38 AM](#)

Present: Chairman Dale W. Lauman, Commissioner Calvin L. Scott, Commissioner Pamela J. Holmquist, Assistant Mike Pence, Public Works Director Dave Prunty, Ryan Mitchell, Clerk DeReu

Bids received with bid bonds enclosed from.

Hardrives	\$1.08 / L.F.
Z & Z Seal Coating	\$1.18 / L.F.

Commissioner Holmquist made a **motion** to take the bids under consideration. Commissioner Scott **seconded** the motion. **Aye** – Lauman, Scott and Holmquist. Motion carried unanimously.

CONSIDERATION OF PRINTING BIDS: EMS AND AOA

[9:37:08 AM](#)

Present: Chairman Dale W. Lauman, Commissioner Calvin L. Scott, Commissioner Pamela J. Holmquist, Assistant Mike Pence, Clerk DeReu

Commissioner Holmquist made a **motion** to award the print bid to Eagle Flight Business Forms for 10,000 patient short forms for \$586.00 for EMS. Commissioner Scott **seconded** the motion. **Aye** – Lauman, Scott and Holmquist. Motion carried unanimously.

Commissioner Scott made a **motion** to award the Health Department print bid to Insty Prints for 700 environmental health score placards for \$220.00. Commissioner Holmquist **seconded** the motion. **Aye** – Lauman, Scott and Holmquist. Motion carried unanimously.

Commissioner Holmquist made a **motion** to award the print bid for AOA to the Towne Printer for 2 sets of 1,000 business cards for \$43.50 each, and 10,000 meal envelopes for \$587.01. Commissioner Scott **seconded** the motion. **Aye** – Lauman, Scott and Holmquist. Motion carried unanimously.

CONSIDERATION OF LAKESHORE EXTENSION REQUEST: EASTON

[9:36:03 AM](#)

Present: Chairman Dale W. Lauman, Commissioner Calvin L. Scott, Commissioner Pamela J. Holmquist, Assistant Mike Pence, Planner Bailey Minnich, Clerk DeReu

Minnich reviewed the extension request for Lakeshore Permit FLP 11-35 received from Rex and Melodee Easton to install a floating "I" dock on Little Bitterroot Lake. The original permit was issued on June 30, 2011 and an extension would extend their deadline to June 30, 2013.

Commissioner Scott made a **motion** to approve Lakeshore Permit FLP 11-35 on Little Bitterroot Lake. Commissioner Holmquist **seconded** the motion. **Aye** – Lauman, Scott and Holmquist. Motion carried unanimously.

BOARD APPOINTMENT: EGAN SLOUGH PLANNING & ZONING COMMISSION

[9:39:03 AM](#)

Present: Chairman Dale W. Lauman, Commissioner Calvin L. Scott, Commissioner Pamela J. Holmquist, Assistant Mike Pence, Clerk DeReu

Commissioner Holmquist made a **motion** to appoint Myron Mast to the Egan Slough Planning & Zoning Commission. Commissioner Scott **seconded** the motion. **Aye** – Lauman, Scott and Holmquist. Motion carried unanimously.

**TUESDAY, JUNE 12, 2012
(Continued)**

DOCUMENT FOR SIGNATURE: DNRC RRG-12-1489/BIGFORK STORMWATER PROJECT

[9:40:34 AM](#)

Present: Chairman Dale W. Lauman, Commissioner Calvin L. Scott, Commissioner Pamela J. Holmquist, Assistant Mike Pence, Grant Writer Debbie Pierson, Clerk DeReu

Pierson noted the document is a close out document related to the Bigfork Stormwater Project.

Commissioner Holmquist made a **motion** to authorize chair to sign the document for signature. Commissioner Scott **seconded** the motion. **Aye** – Lauman, Scott and Holmquist. Motion carried unanimously.

QUARTERLY MEETING W/ PAT MC GLYNN, EXTENSION OFFICE

[10:00:42 AM](#)

Present: Chairman Dale W. Lauman, Commissioner Calvin L. Scott, Commissioner Pamela J. Holmquist, Assistant Mike Pence, MSU Extension Agent Pat McGlynn, 4-H Director Tammi Walker, Clerk DeReu

McGlynn briefed the commission on the status of the following matters.

- Forestry Expo
- Planted trees along Rt 2 West Rails to Trails with Peterson 5th graders for Arbor Day with master gardeners
- Whitefish Library Curb Appeal seminar
- Pesticide training in Bozeman
- Cold hardy wine grapes research planting - KAJ news, papers
- Croatia and Slovenia for MSU – student exchange and research exchange program
- Took cherry growers to WSU Experiment Station and to The Dalles Oregon for cherry research updates
- Weed Free hay certifications will begin next week contingent on rain
- June 28 cherry research field day
- Master Gardeners completing community service hours in the county at area parks and public areas
- Tomorrow Tammy and I are facilitating Glacier County Port Authority meeting

OPEN BIDS: LIBRARY HVAC IMPROVEMENTS

[10:15:08 AM](#)

Present: Chairman Dale W. Lauman, Commissioner Calvin L. Scott, Commissioner Pamela J. Holmquist, Assistant Mike Pence, Library Director Kim Crowley, Justin Dickey, Jeremy Waters, Clerk DeReu

Bids received with bid bonds enclosed from:

	<u>Base Bid</u>	<u>Alt. Bid 1</u>	<u>Alt. Bid 2</u>	<u>Alt. Bid 3</u>	<u>Alt. Bid 4</u>
Van Dort Heating	\$168,070	\$232,270	\$39,558	\$21,075	\$19,250
Diamond Plumbing & Heating	\$176,168	\$ 78,866	\$26,621	\$18,714	\$19,217

Commissioner Holmquist made a **motion** to take the bids under consideration. Commissioner Scott **seconded** the motion. **Aye** – Lauman, Scott and Holmquist. Motion carried unanimously.

PRELIMINARY PLAT EXTENSION AGREEMENT: SCENIC TRACTS, LOT 5, BLOCK 2

[10:21:45 AM](#)

Present: Chairman Dale W. Lauman, Commissioner Calvin L. Scott, Commissioner Pamela J. Holmquist, Assistant Mike Pence, Planner Alex Hogle, Clerk DeReu

Hogle reviewed the extension for Scenic Tracts, Amended Plat of Lot 5, Block 2. He noted on July 12, 2007 the developer received preliminary plat approval, which was set to expire on July 12, 2010; a one-year extension was granted on July 12, 2010 and a second extension was granted to July 12, 2011. One March 21, 2012 the applicant requested an additional one-year extension to July 12, 2013.

Commissioner Holmquist made a **motion** to grant the extension to July 12, 2013. Commissioner Scott **seconded** the motion. **Aye** – Lauman, Scott and Holmquist. Motion carried unanimously.

MONTHLY MEETING W/ CAL BERINGER, OES & LINCOLN CHUTE, FIRE SERVICES AREA MANAGER

[10:30:45 AM](#)

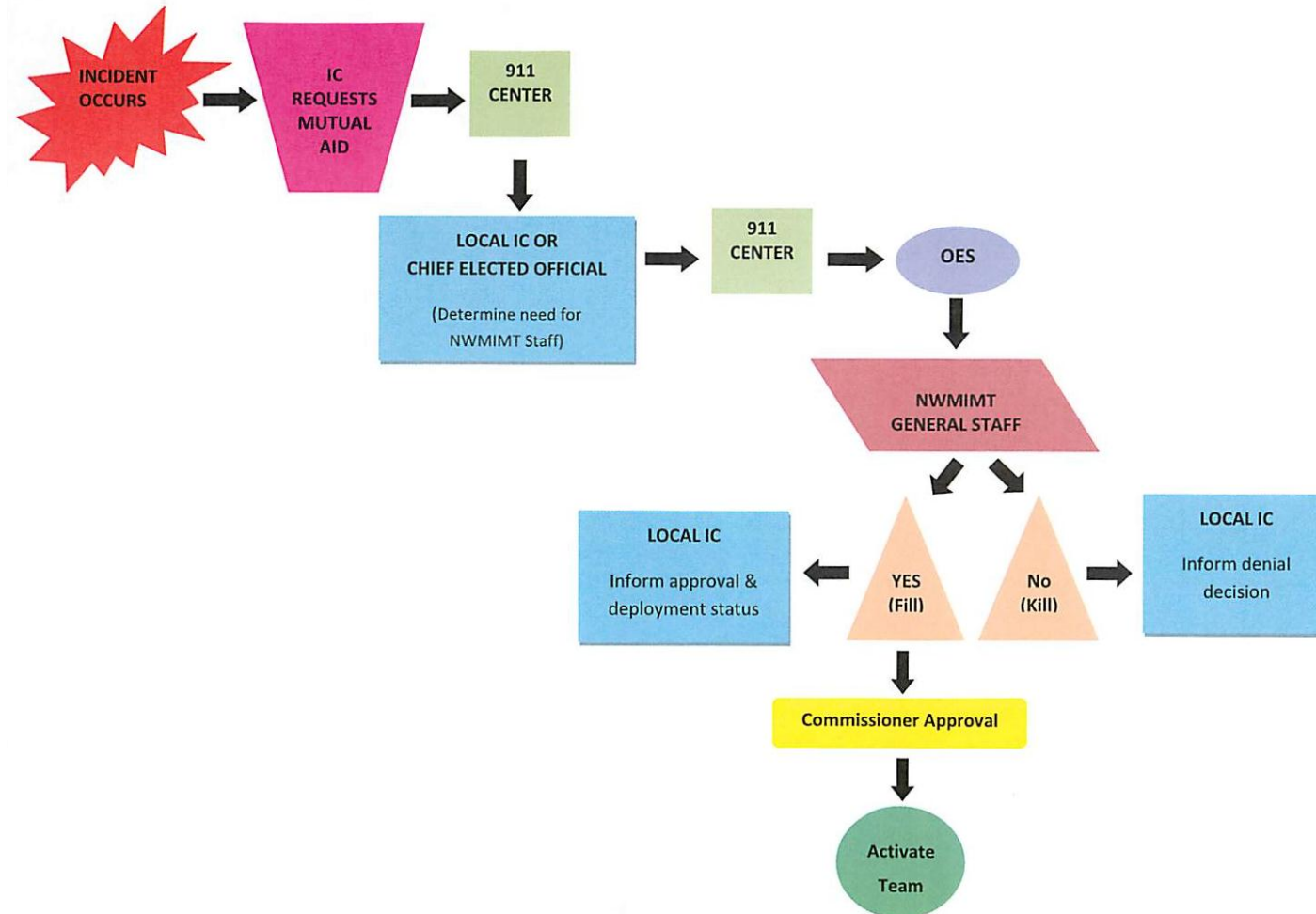
Present: Chairman Dale W. Lauman, Commissioner Calvin L. Scott, Commissioner Pamela J. Holmquist, Assistant Mike Pence, Interim OES Director Cal Beringer, Deputy OES Director Cindy Mullaney, Fire Services Area Manager Lincoln Chute, Clerk DeReu

Mullaney asked the commission for verbal approval in following the proposed activation protocol process.

General discussion was held relative to the process that would be followed and it was agreed the Board Chairman would respond.

**TUESDAY, JUNE 12, 2012
(Continued)**

NWMTIMT Activation Process



Discussion was held relative to using social media to keep the public informed.

Chute spoke about radio communication concerns and progress with the Ashley Lake Fire Hall.

At 5:00 o'clock P.M., the Board continued the session until 8:00 o'clock A.M. on June 13, 2012.

WEDNESDAY, JUNE 13, 2012

The Board of County Commissioners met in continued session at 8:00 o'clock A.M. Chairman Lauman, Commissioner Scott and Holmquist, and Clerk Robinson were present.

- 9:00 a.m. Commissioners' Budget Workshop @ Courthouse 3rd Floor Conference Room
- 11:00 a.m. County Attorney meeting @ Co. Atty's Office
- 1:15 p.m. Commissioner Holmquist: 911 Board meeting @ FECC

At 5:00 o'clock P.M., the Board continued the session until 8:00 o'clock A.M. on June 14, 2012.

THURSDAY, JUNE 14, 2012

The Board of County Commissioners met in continued session at 8:00 o'clock A.M. Chairman Lauman, Commissioner Scott and Holmquist, and Clerk Robinson were present.

Chairman Lauman opened public comment on matters within the Commissions' Jurisdiction, no one present to speak, Chairman Lauman closed the public comment period.

DOCUMENT FOR SIGNATURE: EMPLOYMENT AGREEMENT AMENDMENT/ SAXBY

8:45:54 AM

Present: Chairman Dale W. Lauman, Commissioner Calvin L. Scott, Commissioner Pamela J. Holmquist, I.T. Director Vicki Saxby, H.R. Director Tammy Skramovsky, Clerk Kile

Skramovsky explained the new contract will have an updated job description and rate of pay, and the old contract is to be terminated and replaced.

Commissioner Scott made a **motion** to terminate the current employment agreement. Commissioner Holmquist **seconded** the motion. **Aye** – Lauman, Scott and Holmquist. Motion carried unanimously.

THURSDAY, JUNE 14, 2012
(Continued)

CONSIDERATION OF H.R. TRANSMITTAL: I.T. DIRECTOR

[8:47:37 AM](#)

Present: Chairman Dale W. Lauman, Commissioner Calvin L. Scott, Commissioner Pamela J. Holmquist, Assistant Mike Pence, I.T. Director Vicki Saxby, H.R. Director Tammy Skramovsky, Clerk Kile

Commissioner Holmquist made a **motion** to approve the H. R. Transmittal for a revised job description for the I.T. Director. Commissioner Scott **seconded** the motion. **Aye** – Lauman, Scott and Holmquist. Motion carried unanimously.

MONTHLY MEETING W/ B. J. GRIEVE, PLANNING & ZONING OFFICE

[9:01:37 AM](#)

Present: Chairman Dale W. Lauman, Commissioner Calvin L. Scott, Commissioner Pamela J. Holmquist, Assistant Mike Pence, Planning & Zoning Director B. J. Grieve, Clerk Kile

Grieve reviewed a progress report on staff's workload, budget statistics and enforcement issues. It was reported Eric Mack was hired as a planner in their office. He spoke about the need to hire a part-time code compliance officer to take on enforcement issues. Other items reported on included concerns related to updating the growth policy, the timeline in processing applications, preparation of their 2013 strategic plan and updating the floodplain regulations.

CONSIDERATION OF ADOPTION OF RESOLUTION: GIS MAP FEES

[9:30:42 AM](#)

Present: Chairman Dale W. Lauman, Commissioner Calvin L. Scott, Commissioner Pamela J. Holmquist, Assistant Mike Pence, Deputy County Attorney Peter Steele, GIS Program Manager Mindy Cochran, GIS Director Vicki Saxby, Clerk Kile

Cochran explained with restructuring of the GIS Department now under the I.T. Department they are reconfiguring their fee schedule to correspond to costs.

Commissioner Scott made a **motion** to adopt Resolution 2332. Commissioner Holmquist **seconded** the motion. **Aye** – Lauman, Scott and Holmquist. Motion carried unanimously.

RESOLUTION NO. 2332

WHEREAS, the Flathead County Geographic Information System (GIS) Office often times creates maps and ownership lists for private citizens;

WHEREAS, the costs of creating the maps and lists should be offset by fees so as to not burden the general Flathead County taxpayer with paying for these services; and

WHEREAS, the fees charged should generally attempt to match the costs associated with creating a particular type of map or list for which the fee is charged.

NOW, THEREFORE, IT IS HEREBY RESOLVED, by the Board of Commissioners of Flathead County, Montana, that the fees collected by the Flathead County GIS Office shall be as stated on the attached fee schedule.

BE IT FURTHER RESOLVED that the attached fee schedule shall be effective immediately.

Dated this 14th day of June, 2012.

BOARD OF COUNTY COMMISSIONERS
Flathead County, Montana

By/s/Dale W. Lauman
Dale W. Lauman, Chairman

By/s/Pamela J. Holmquist
Pamela J. Holmquist, Member

By/s/Calvin L. Scott
Calvin L. Scott, Member

ATTEST:
Paula Robinson, Clerk

By/s/Diana Kile
Diana Kile, Deputy

**THURSDAY, JUNE 14, 2012
(Continued)**

Flathead County GIS Fee Schedule	
GIS MAP PRICES	
GIS Mapping	\$20 per half hour
Large Media Map (18" and larger)	\$0.30 per sq ft
Map and / or Map Books - 8.5" X 11" or 11" X17	See print prices
Shipping & Handling	\$5.00
GIS OWNERSHIP LIST PRICES Certified lists are not available if more than 250 parcels are involved.	
Non-Certified Lists	\$40 per hour
Non-Certified Lists medium	Standard B/W print price or CD price applies
Certified Ownership List - (Includes Paper Copy and Vicinity Map)	\$75.00
Certified Ownership List - Rush order. 24 to 48 hours	\$150.00
PRINT PRICES	
8 ½ X 11 Black & White	\$0.10 per page
11 X 17 Black & White	\$0.25 per page
8 ½ x 11 Color	\$0.50 per page
11 X 17 Color	\$1.25 per page
DIGITAL MEDIA	
Electronic format (CD)	\$0.50
Electronic format (DVD)	\$1.00
OTHER	
Training Sessions	\$40 per hour, to include travel time & time to develop syllabus

The GIS Department will accommodate requests for customized maps whenever possible. To place an order, please [contact us](#) via email or call (406)758-5540. Orders will be fulfilled within 1 week from time of request whenever feasible.

CONSIDERATION OF ADOPTION OF RESOLUTION: DISPOSITION OF COUNTY TAX DEED LAND

[9:35:56 AM](#)

Present: Chairman Dale W. Lauman, Commissioner Calvin L. Scott, Commissioner Pamela J. Holmquist, Assistant Mike Pence, Deputy County Attorney Peter Steele, Plat Room Sheena Sterling, Plat Room Lucy Foster, Clerk Kile

Steele explained the procedures in taking properties on a tax deed. The proposed resolution orders the selling of one parcel.

Commissioner Holmquist made a **motion** to adopt Resolution 2316B. Commissioner Scott **seconded** the motion. **Aye –** Lauman, Scott and Holmquist. Motion carried unanimously.

RESOLUTION NO. 2316B

WHEREAS, on November 30, 2011, the Flathead County Commissioners issued Resolution 2316 directing the County Treasurer to issue a tax deed to Flathead County for each of the properties listed on the Exhibit that was attached to the Resolution;

WHEREAS, it is the duty of the board of county commissioners to enter an order to sell, donate, or retain land acquired by tax deed;

WHEREAS, seven tracts of land from the original list in Resolution 2316 remain in Flathead County's ownership;

WHEREAS, four tracts are portions of roads, one tract is a cemetery lot, one tract is a strip of land that is 45 feet wide which is rife with surveyor errors, and one tract is a small tract of land off of Holt Drive in Eagle Bend in the Bigfork area; and

WHEREAS, the small tract of land in Eagle Bend is the only tract, out of the seven tracts of land, which should be sold.

NOW, THEREFORE, IT IS HEREBY RESOLVED that the Board of Commissioners of Flathead County, Montana, hereby directs the County Attorney's Office to auction off, for a price not less than \$360.00, the following tract of land:

Tract F of the Amended Plat of the Amended Plat of Eagle Bend, 26-27-20, Assessor Number 0973500

BE IT FURTHER RESOLVED, the following tracts of land shall be retained by Flathead County:

A portion of Willow Glen Drive, Tract 4C in SW4NW4, 21-28-21,
Assessor Number 0002405;

Portions of Echo Lake Road Tract 3 and Tract 2AA in SW1/4, 4-27-19,

Assessor Number 0073000;

THURSDAY, JUNE 14, 2012
(Continued)

A portion of Riverside Drive Tract 3AA in NW4NW4, 8-28-21,
Assessor Number 0913050;

Lariat Lane, a road shown on the Plat of Richsaddle Subdivision, 15-28-22,
Assessor Number 0007650;

A strip of land, Tract 1A in NW4NE4, 7-30-20,
Assessor Number 0749600; and

A Cemetery Lot, Tract 5AA in NW4NW4, 23-29-20,
Assessor Number 0011739.

Dated this 14th day of June, 2012.

BOARD OF COUNTY COMMISSIONERS
Flathead County, Montana

By/s/Dale W. Lauman
Dale W. Lauman, Chairman

By/s/Pamela J. Holmquist
Pamela J. Holmquist, Member

By/s/Calvin L. Scott
Calvin L. Scott, Member

ATTEST:
Paula Robinson, Clerk

By/s/Diana Kile
Diana Kile, Deputy

DOCUMENT FOR SIGNATURE: LOCAL SPONSOR AGREEMENT/ SWAN RIVER ROAD PATH

[9:38:10 AM](#)

Present: Chairman Dale W. Lauman, Commissioner Calvin L. Scott, Commissioner Pamela J. Holmquist, Assistant Mike Pence, Planning & Zoning Director B. J. Grieve, Planner Alex Hogle, Ed Nolde, Clerk Kile

Hogle reviewed the agreement between Flathead County and Bigfork Rotary Club pertaining to the role and responsibilities of each party in maintaining the 1.5-mile long hard surfaced bicycle and pedestrian path known as the Swan River Road Path-East of Bigfork.

Commissioner Holmquist made a **motion** to authorize chair to sign the project specific agreement for the Swan River Road Trail. Commissioner Scott **seconded** the motion. **Aye** – Lauman, Scott and Holmquist. Motion carried unanimously.

DOCUMENT FOR SIGNATURE: MDOT PROJECT SPECIFIC AGREEMENT/ SWAN RIVER ROAD PATH CTEP

[9:42:46 AM](#)

Present: Chairman Dale W. Lauman, Commissioner Calvin L. Scott, Commissioner Pamela J. Holmquist, Assistant Mike Pence, Planning & Zoning Director B. J. Grieve, Planner Alex Hogle, Ed Nolde, Clerk Kile

Hogle explained the commission approved in 2011 the CTEP application for Swan River Road that was then sent to MDOT. A project specific agreement from MDOT has been received, which will move the project out of the conceptual stage into an actual project to be started. He reviewed financial elements of the project agreement, which is recorded in the Clerk & Recorder's Office as document #201200013039.

Grieve noted a mechanism is in the document that clearly states if there are cost overruns incurred that the scope of the project would be trimmed back to stay within the allocation.

Commissioner Holmquist made a **motion** to approve the CTEP Project Agreement between the State of Montana and Flathead County. Commissioner Scott **seconded** the motion. **Aye** – Lauman, Scott and Holmquist. Motion carried unanimously.

DOCUMENT FOR SIGNATURE: BIGFORK LAND USE ADVISORY COMMITTEE BY-LAWS

[9:46:34 AM](#)

Present: Chairman Dale W. Lauman, Commissioner Calvin L. Scott, Commissioner Pamela J. Holmquist, Assistant Mike Pence, Planning & Zoning Director B. J. Grieve, Planner Alex Hogle, Clerk Kile

Commissioner Holmquist made a **motion** to table approval until further review. Commissioner Scott **seconded** the motion. **Aye** – Lauman, Scott and Holmquist. Motion carried unanimously.

DOCUMENT FOR SIGNATURE: EMPG SCOPE OF WORK/ OES

[9:47:59 AM](#)

Present: Chairman Dale W. Lauman, Commissioner Calvin L. Scott, Commissioner Pamela J. Holmquist, Assistant Mike Pence, Deputy County Attorney Peter Steele, OES Deputy Director Cindy Mullaney, Clerk Kile

Mullaney explained the document is the grant application for EMPG funding that supports a portion of the emergency side of the OES Program.

Commissioner Holmquist made a **motion** to approve signature of the EMPG Scope of Work document for OES. Commissioner Scott **seconded** the motion. **Aye** – Lauman, Scott and Holmquist. Motion carried unanimously.

FRIDAY, JUNE 15, 2012

The Board of County Commissioners met in continued session at 8:00 o'clock A.M. Chairman Lauman, Commissioner Scott and Holmquist, and Clerk Robinson were present.

9:00 a.m. Commissioner Lauman: Mental Health Council & CDC meetings in Libby
3:00 p.m. Commissioner Lauman & Commissioner Holmquist: Flathead Audubon Society trail opening at Sowerwine Natural Area Handicapped Accessibility Project

At 5:00 o'clock P.M., the Board continued the session until 8:00 o'clock A.M. on June 18, 2012.
