
MONDAY, JANUARY 31, 2011

The Board of County Commissioners met in continued session at 8:00 o'clock A.M. Chairman Dupont, Commissioners Lauman and Holmquist, and Clerk Robinson were present.

7:00 p.m. Commissioner Dupont: Columbia Falls City Council meeting re: Library

At 5:00 o'clock P.M., the Board continued the session until 8:00 o'clock A.M. on February 1, 2011.

The following are claims for the month of January, 2011.

48 NORTH PC CIVIL ENGINEERING SERVICES	\$510.00
A & I DISTRIBUTORS	\$1,521.87
A-1 TOWING	\$300.00
ABELIN TRAFFIC SERVICES INC	\$2,900.00
ADAMS, DAVID J 1	\$240.01
ADDCO OFFICE SYSTEMS, INC	\$244.53
ADKINS, GREG	\$37.00
ADVANCED REFRIGERATION & APPLIANCE INC	\$585.23
ADVANCED RESTAURANT SUPPLY INC	\$131.77
AGAPE' HOME CARE INC	\$4,671.91
AIRWORKS HEATING & COOLING INC	\$2,400.00
ALAN'S PUMP SALES & SERVICE INC	\$409.25
ALL BRIGHT WINDOW CLEANING	\$750.00
ALLIED 100	\$725.00
ALLISON, JEANE K	\$18.26
ALLTEL	\$669.01
ALPINE BUSINESS CENTER	\$8,720.00
AMERICAN ELECTRIC, INC	\$1,824.02
AMERICAN LINEN DIVISION	\$672.23
AMERICAN MOSQUITO CONTROL ASSOC	\$50.00
AMERICAN PLANNING ASSOCIATION 2	\$85.00
AMERICAN TOOL WAREHOUSE	\$1,200.00
AMSAN CUSTODIAL SUPPLY	\$1,117.84
ANDENORO, LYNN P	\$32.00
ANDERSON ZURMUEHLEN & CO, PC	\$7,500.00
ANDERSON, RICK	\$706.00
API SYSTEMS INTEGRATORS INC	\$92.00
APPLIED CONCEPTS INC	\$6,040.00
APPLIED INDUSTRIAL TECHNOLOGIES INC	\$44.25
APPLIED WATER CONSULTING LLC	\$2,482.45
ARCHITECTS DESIGN GROUP PC	\$7,000.00
ARNESON, DONALD G REV LIVING TRUST	\$45.72
ASA & GILMAN REPORTING, INC.	\$148.50
ASCENT STRATEGIC DEVELOPMENT	\$325.00
ASSOC OF MONTANA FLOODPLAIN MANAGERS	\$75.00
ASTLE, ROBERT M & SHELLEY R	\$113.88
ATLAS SECURITY PRODUCTS	\$3,680.65
AUGUSTA, DALE	\$16.00
BAKER, MARVIN A	\$530.11
BAKER, MICHAEL	\$17.10
BANCROFT, SANDRA I & GERGORY B	\$256.99
BARTH, DOUGLAS J & SUSAN L	\$78.60
BAYER, KAREN	\$82.46
BEACH, RANDY E & RUBY A	\$62.20
BEAN, CURTIS	\$200.00
BEE BROADCASTING INC	\$600.00
BEHRENS, JACK	\$34.44
BENNETT, CLIFFORD	\$157.51
BERNA PRODUCTS CORP	\$960.00
BIGFORK SENIOR CITIZENS	\$1,485.13
BIGFORK WATER/SEWER DISTRICT	\$119.15
BINETTE, ANDREW	\$26.10
BLACKTAIL REFRIGERATION INC	\$579.73
BLANC, LON	\$17.22
BLICHARZ, FAITH	\$100.00
BLUE RIDGE SERVICES, INC	\$1,050.00
BOARD OF DENTISTRY	\$70.00
BOB BARKER CO INC	\$58.72
BOEHM, MARTY	\$65,000.00
BOLIN, HENRY M & ANA I	\$70.57
BOLSTER'S TOWING INC	\$1,742.00
BOLZ LIVING TRUST	\$409.36
BOYD, NORMAN C	\$9,130.38
BOYD, STEVEN D	\$134.05

**JANUARY, 2011
(Continued)**

BRESNAN COMMUNICATIONS LLC	\$1,560.95
BRODY CHEMICAL	\$1,721.84
BROOKS, ANN M	\$24.00
BROSTEN, JUDITH ANN	\$22.00
BROWNE, ERIK H	\$29.00
BUCKLEY, WILLIAM	\$15.06
BUFFALO HILL FUNERAL HOME	\$1,350.00
BULLIS, RICHARD A.	\$1,650.00
BUNYAK FAMILY TRUST	\$251.49
BURKHART, JEFFREY STONE	\$130.10
BURTON, JAMES H	\$735.00
BUSY BEE DRY CLEANERS	\$226.80
BYRD, OVILA	\$14.99
CALLAN, NANCY JEAN	\$18.00
CAMPBELL PET COMPANY	\$323.62
CAMPBELL, MARK	\$145.00
CARDINAL DISCOUNT SUPPLY INC	\$465.16
CARDINAL HEALTH	\$2,586.59
CARDINAL HOME CENTER	\$89.11
CARDON, STEWART S & KERRIE H P	\$151.06
CARON, SHERRI LYNNE	\$500.34
CARQUEST	\$55.98
CARQUEST AUTO PARTS STORES	\$1,171.16
CARSON, ELLA MARIE	\$24.75
CARVER ENGINEERING 1	\$3,468.78
CASSIDY, KATE	\$11.97
CATNIP	\$20.00
CBM FOOD SERVICE	\$12,147.82
CENTER FOR RESTORATIVE YOUTH JUSTICE	\$12,110.70
CENTRAL FIBER CORPORATION	\$16,230.00
CENTURYLINK	\$19,442.40
CERTIFIED LABORATORIES	\$486.93
CHAPEL, DWAYNE LEE	\$10.11
CHILDERS, BRET	\$87.00
CHS INC - KALISPELL	\$104.87
CHUTE, LINCOLN	\$17.00
CITYSERVICEVALCON LLC	\$90,883.98
CLARK, DON & JERIE FAMILY TRUST	\$855.26
CLARK, SAM	\$175.00
CLOSE, CIERA	\$290.00
CMG ENGINEERING	\$730.00
CMI INC	\$226.09
COCHRAN, MINDY	\$30.96
COLBERT, KAY D	\$163.50
COLLINS, MARY P	\$17.10
COLUMBIA BLUFFS LLC	\$393.60
COLUMBIA FALLS, CITY OF	\$28.41
COLYER, MICHAEL D & SHERRIE M	\$9.72
COMMERCIAL MACHINE SERVICES, INC	\$388.53
COMMUNITY ACTION PARTNERSHIP	\$11,322.67
CONNELLY, CHRISTOPHER PATRICK	\$24.75
CONRAD MAIN STREET LLC	\$3,388.66
CONRAD, CHARLES	\$12.72
CORTECH CORRECTIONAL TECHNOLOGIES I	\$4,220.00
COSNER COMTECH INC	\$625.91
COWAN, RICHARD A & DIANA M	\$77.36
COWGER, SARA	\$29.40
CRESCENT ELECTRIC SUPPLY CO	\$548.44
CRIMINAL RECORDS	\$117.00
CROW, CHARLES D & CANDACE J	\$282.04
CTA ARCHITECTS ENGINEERS	\$25,818.99
CULLIGAN WATER	\$1,711.22
CUMMINGS, SUE	\$18.00
CUNAN, RAYMOND L & LANA T	\$111.60
CURRIER'S WELDING INC	\$1,560.00
CURTIS, JILL ANN	\$822.75
DAHLEM, MICHAEL ATTORNEY AT LAW	\$150.00
DAILY INTERLAKE	\$1,991.31
DALEN'S DIESEL SERVICE INC	\$2,809.22
DATA FINANCIAL, INC	\$8,170.00
DATA IMAGING SYSTEMS INC	\$1,118.10
DAVENPORT, JAY	\$182.32
DAVEY, AMANDA	\$50.00
DAVIS PIPE & MACHINERY, INC	\$114.85
DAVIS, MONTE R JR	\$55.27
DE LAGE LANDEN FINANCIAL SERVICES	\$485.50
DENMAN, MOLLY	\$98.60
DEPRATU FORD SALES	\$1,549.06
DEPT OF ENVIRONMENTAL QUALITY 3	\$10,622.70

**JANUARY, 2011
(Continued)**

DEPT OF JUSTICE 6	\$1,050.00
DEPT OF LIVESTOCK	\$50.00
DEPT OF PUBLIC HEALTH & HUMAN SRVS 1	\$310.25
DEPT OF REVENUE 6	\$1,471.08
DEVOE, LINDA	\$17.10
DIAMOND PLUMBING & HEATING INC	\$3,981.00
DICKMAN, DANIEL	\$100.00
DIGITAL COMMUNICATIONS SYSTEM, INC	\$1,479.46
DISASTER MANAGEMENT SYSTEMS	\$1,194.86
DIVERSIFIED ELECTRIC CO	\$165.00
DOUG ANDRUS DISTRIBUTING INC	\$5,669.30
DOWNING, MIKE	\$115.00
DUFFEY, MARCUS E	\$22.71
DUMAY, ALEC J & J HOLLY L	\$49.76
DUNCAN, CHARLENE	\$42.00
DYCK, ROBERT R & SANDRA G	\$122.46
DYON, MICHAEL R	\$29.88
ECLINICAL WORKS	\$3,554.00
EGGUM, VICKIE	\$357.71
EISINGER MOTORS	\$679.22
ELECTRICAL SYSTEMS INC	\$2,112.94
ELIASSEN, ANDREAS H	\$37.50
ELLIOT, RANDI	\$81.50
ELLIOTT, ROGER	\$280.00
EMERGENCY MANAGEMENT CONSULTANTS	\$2,828.00
EMERSON, CHAD & ERIC	\$207.66
ENVIRO-TIRE INC	\$127.00
ERICKSON, CONNIE	\$142.00
ESRI INC	\$800.00
EVERGREEN DISPOSAL INC	\$17,958.80
EVERGREEN WATER DISTRICT #1	\$16.00
EXPRESS EMPLOYMENT PROFESSIONALS	\$11,150.77
FARMER BROTHERS CO	\$153.84
FASTENAL COMPANY	\$639.21
FASTENERS INC	\$39.81
FAUSKE, PETE	\$24.00
FEDEX EXPRESS	\$35.68
FERGUSON ENTERPRISES, INC	\$450.26
FICKLER OIL COMPANY INC	\$766.09
FIELDS, EDWIN	\$98.27
FIRE CONTROL SPRINKLER SYSTEMS	\$1,193.39
FIRE MANAGEMENT SYSTEMS	\$301.56
FIRST BANKCARD	\$29,100.07
FIRST INTERSTATE BANK TRUSTEE	\$2,116.54
FISH, CANDACE	\$10.50
FLATHEAD BEACON	\$1,080.00
FLATHEAD CARE	\$1,500.00
FLATHEAD CITY-COUNTY HEALTH DEPT	\$224.00
FLATHEAD ELECTRIC COOPERATIVE INC	\$24,824.98
FLATHEAD FOOD BANK	\$461.83
FLATHEAD VALLEY COMMUNITY COLLEGE	\$17,980.50
FLEMING, MANDIE	\$79.00
FLINT FAMILY TRUST	\$104.11
FOGELSONG REAL PROPERTY TRUST	\$15.81
FOOD SERVICES OF AMERICA	\$9,481.34
FORENSIC SCIENCE DIVISION	\$64.00
FOSTER, NATHAN R	\$206.62
FREIBERG, ROBERT J & DEANNA J	\$212.59
GALBRAITH, CATHERINE J	\$65.03
GARLINGTON, LOHN & ROBINSON, PLLP	\$1,275.73
GARLITZ, JOHN H	\$95.00
GAYLORD BROTHERS, INC	\$56.82
GCR TIRE CENTER	\$5,046.97
GERBOZY, JOHN K & NANCY D	\$86.94
GIBBS, JOHN D & RHONDA K	\$37.33
GIBSON, SHERI A	\$214.25
GLACIER BANK	\$134,770.00
GLACIER HIGH SCHOOL	\$90.00
GLACIER RV/BOAT STORAGE	\$840.00
GLACIER WHOLESALERS INC	\$329.22
GLASS DOCTOR	\$225.00
GLAXOSMITHKLINE PHARMACEUTICALS	\$7,327.10
GLOBAL PROTECTION CORP	\$878.04
GO DEVELOPMENT LLC	\$118.69
GOLDEN MEADOW PROPERTIES INC	\$247.41
GONSER, JAMES E	\$14.55
GOODWIN, DENNIS R & MAMIE S R	\$43.73
GORDON, CHRISTOPHER S	\$540.56
GOVERNMENT FINANCE OFFICERS ASSN	\$790.00

**JANUARY, 2011
(Continued)**

GRABER, M ELAINE	\$84.66
GRADE 8 EARTHWORKS	\$1,500.00
GREASE MONKEY	\$682.30
GREAT NORTHERN LOCK & SAFE	\$255.40
GREAT NORTHERN PRINTING INC	\$49.90
GRESS, DARRIN D	\$31.32
GRESS, ROCKY	\$400.00
GRIZZLY MOON MASH, LLC	\$126.81
GRIZZLY SECURITY ALARMS INC	\$1,908.00
GROSSMAN, LEW 1	\$46.00
GUERRI, ANN M	\$227.00
GUNDERSON, BRUCE	\$195.09
GUSE, LELAND M	\$10.23
GUTIERREZ-FALLA, EDUARDO	\$223.35
H&H EXPRESS INC	\$30.80
HADER, MARGE	\$29.13
HAGEN, RONALD D & ROBERTA K	\$79.45
HALAMA, PAULA	\$100.00
HALL, TRAVIS	\$25.20
HALLSTROM, KRISTINE E	\$250.91
HALLSTROM, WILLARD	\$225.67
HANSFORD, BENJAMIN R & ANGELA	\$94.95
HARKINS, COLTON	\$65.00
HARTSOCH, DOROTHY	\$750.00
HARTSOCH, FAYE	\$16.80
HAYNES FAMILY LIVING TRUST	\$59.00
HAYNES, DENTON S & BEVERLY L	\$200.11
HAYNES, STEVEN L	\$86.71
HAZLETT, SHERI J RPR	\$260.00
HEALTH E-WEB	\$207.00
HEGER, SUSAN CAROL	\$17.00
HEINO, NEIL	\$38.00
HENDERSON, CHERYL L	\$64.00
HENDERSON, DOUGLAS K	\$175.80
HENRY SCHEIN	\$1,064.77
HERFORD, THOMAS WAYNE	\$17.10
HEUSCHER, SANDY R	\$259.67
HEYDORFF, RENNE C	\$35.30
HIGH COUNTRY LINEN SUPPLY	\$1,399.67
HILL'S PET NUTRITION SALES INC	\$630.00
HILLEY, MARGARET	\$275.09
HOLDHUSEN, CHRISTOPHER	\$648.46
HOLM, FAYE M	\$94.40
HOLMQUIST, PAM	\$159.64
HOME DEPOT CREDIT SERVICES	\$1,011.04
HOMESTEAD PRESS	\$280.00
HOPE, KATHLEEN A	\$28.00
HOWARD, ELDON M & RAE	\$46.32
HSBC BUSINESS SOLUTIONS 1	\$3,152.57
HUDSON, JERREL	\$18.00
HUFF, MARY KAY TRUST	\$214.22
HULDEN, JOHN HALAAS	\$38.57
HULLA, WES	\$99.08
HUNGRY HORSE WATER & SEWER DIST	\$251.82
HURST FAMILY LIMITED PARTNERSHIP	\$275.17
HYDROMETRICS INC	\$144.00
IKON OFFICE SOLUTIONS	\$450.79
IMPERIAL DRY CLEANERS INC	\$32.20
INGENIX	\$68.22
INGRAM LIBRARY SERVICES	\$6,847.45
INLAND TRUCK PARTS & SERVICE	\$447.51
INSTITUTE FOR ADVANCED DEVELOPMENT LLC	\$12,500.00
INSTY PRINTS	\$137.25
IRISH, CRAIG A	\$23.00
J&M TRANSPORTATION SERVICE INC	\$54.00
J2 OFFICE PRODUCTS	\$21,295.33
JANITORS WORLD SUPPLIES	\$1,297.14
JAWORSKY, MICHAEL	\$14.70
JENSEN, WAYNE A KAAREN J	\$241.16
JESCO BOAT CENTER LLC	\$134.91
JIM PALMER SIGNS	\$195.00
JOBS AVAILABLE INC	\$35.00
JOHANN, DIANA M	\$92.05
JOHNSON CONTROLS INC	\$20,003.50
JOHNSON, CASH ANDERS	\$380.00
JOHNSON, JEFFREY J	\$313.63
JOHNSON-GLOSCHAT FUNERAL HOME	\$5,600.00
JOHNSTONE SUPPLY	\$921.50
JONES & BARTLETT PUBLISHERS, INC	\$1,095.80

**JANUARY, 2011
(Continued)**

JONES, NATHAN	\$27.30
JONES, SHANNON K	\$35.46
JONES, WILLIAM J & PATRICIA A	\$15.73
JOSEPHSON FAMILY TRUST	\$213.49
JUST RITE ACOUSTICS INC	\$2,116.00
K&J INVESTMENTS LLC	\$27,410.44
KALISPELL AUTO PARTS	\$3,017.63
KALISPELL CITY WATER DEPT	\$553.76
KALISPELL COPY & BLUE INC	\$507.29
KALISPELL ELECTRIC INC	\$747.68
KALISPELL OVERHEAD DOOR SERVICE INC	\$320.00
KALISPELL PARKING COMMISSION	\$78.00
KALISPELL REGIONAL MEDICAL CENTER	\$4,090.85
KALISPELL SENIOR CENTER	\$1,906.13
KALISPELL TOYOTA	\$73.08
KALMONT DISTRIBUTORS INC	\$140.00
KAMAN INDUSTRIAL TECHNOLOGIES CORP	\$38.65
KAMINSKI, M B	\$89.69
KELLER, TERRY L	\$148.49
KELLY, BRIAN	\$210.00
KILMAN, JOSEPH D	\$29.34
KING INVESTMENTS LLC	\$8.58
KIRBY, ALLAN LYNN AKA ALLEN LYNN	\$332.14
KIRBY, JAMES M	\$58.04
KIRKLAND, PATRICIA J	\$128.47
KIRKPATRICK, FRED L & BONNIE I	\$7.14
KLEINHANS FARMS ESTATES, LLC	\$250,000.00
KLS HYDRAULICS & MACHINE WORKS LLC	\$5,344.91
KMART 7030	\$211.74
KNAFF, KYLE	\$48.03
KOSITZKY, JO ANN	\$35.00
KOTILA, DEANNA C	\$30.36
KRUCKENBERG, LISA M	\$300.00
LACY, BARBARA B	\$581.36
LAKESIDE COMMUNITY CHAPEL	\$300.00
LAKESIDE COUNTY WATER & SEWER	\$46.75
LAKO, JARED	\$78.00
LANE, PATRICIA J	\$222.86
LARRY DAVEY'S USED CARS	\$100.00
LARSON, HOLLY JEAN	\$17.36
LASALLE AUTOMOTIVE	\$15.00
LASALLE EQUINE CLINIC, PLLC	\$206.00
LAUER, JAMES D	\$94.44
LAWSON PRODUCTS	\$1,236.74
LC STAFFING SERVICE	\$3,087.32
LEAF	\$93.00
LEBERMAN, ANNIE	\$27.75
LEHMANN FAMILY TRUST	\$199.07
LENOIR, RODNEY	\$25.20
LEOPOLD, LINDA J	\$176.00
LES SCHWAB TIRE CENTER #904	\$515.00
LIBERTY NORTHWEST	\$65,310.82
LILIENTHAL INSULATION COMPANY LLC	\$13,399.44
LINDBERG, MARGARET ELAINE	\$58.44
LINRUDE, KEVIN A & MELISSA	\$670.39
LIST, KATHERINE A	\$2,558.00
LOGAN, ALBERT L & NATALIE MARGARET	\$298.49
LOOSE ENDS UPHOLSTERY, LLC	\$222.50
LOREN'S CARPET CARE	\$400.00
LOS ANGELES COUNTY SHERIFF'S DEPT	\$140.00
LOVETT, PAUL F	\$125.00
LOZAR'S TOTAL SCREEN DESIGN	\$1,557.00
LUCAS, MARVEL D	\$9.07
LUCE, DEBBIE CRAFT	\$137.62
LUHMAN, THERESA MERRILL	\$44.00
LUND, NEAL T	\$265.25
LUNDGREN, ELIZABETH	\$20.67
LUTZ, BRUCE F & NELLIE C	\$239.84
M&M COMMUNICATIONS INC	\$964.00
MACMILLAN, ELLEN C	\$134.90
MAGIC WANDA'S CLEANING SERVICE	\$337.50
MAIL ROOM, THE	\$8,541.65
MAKULEC, JENNIFER	\$2,775.00
MALKUCH, TINA LEE	\$580.00
MANTEL, KENNETH B	\$161.18
MARQUARDT, DAWN	\$13.02
MAT & MITER, THE	\$360.00
MATHISON, MARLENE	\$150.50
MCCARTHY, ALLISON	\$484.74

**JANUARY, 2011
(Continued)**

MCGILL, SANDRA DANZ	\$23.73
MCNAMARA, JAMES M JR & JEANETTE A	\$42.54
MCNAMARA, TED & JULIE	\$175.67
MCNEILLY, NEIL X & FLORENCE C	\$15.99
MDM SUPPLY	\$76.20
MEADOW GOLD - GREAT FALLS	\$757.14
MEADOW LAKE COUNTY WATER/SEWER DIST	\$494.28
MEDICAL ARTS PHARMACY	\$1.75
MEDICAL ARTS PRESS	\$120.78
MELBY, LOWELL V & PATRICIA E	\$45.93
MENDENHALL, MELISSA L & TRENT L	\$35.80
MERCK & COMPANY INC	\$7,535.02
MEREDITH CONSTRUCTION CO	\$52,986.33
MERIAL LIMITED	\$243.50
METAL WORKS & MUFFLER	\$101.66
MEYER, JULIE MARIE	\$100.00
MIDWEST CANCER SCREENING	\$1,241.49
MIDWEST TAPE LLC	\$3,612.66
MIELKE, JEFF	\$44.72
MIKE'S CONOCO CORPORATE OFFICE	\$15.00
MILLER, WAYNE	\$265.00
MINNICH, JAMES A	\$6.12
MINNPAR, LLC	\$95.23
MISSION MOUNTAIN WHOLESALE	\$575.48
MITCHELL, JAMES L	\$176.41
MONTANA ACE - KALISPELL	\$60.26
MONTANA DIGITAL LLC	\$720.00
MONTANA ENVIRONMENTAL LAB LLC	\$20.00
MONTANA HIGHWAY PATROL	\$304.98
MONTANA LAND PROJECT, LLC	\$56,121.17
MONTANA LAW WEEK	\$345.00
MONTANA ONE CALL CENTER	\$258.98
MONTANA PETERBILT	\$1,431.14
MONTANA STATE EXTENSION	\$10,666.60
MONTANA STATE TREASURER 1	\$2,803.35
MONTANA STATE UNIVERSITY 9	\$202.25
MONTGOMERY, RICHARD T	\$2,880.00
MOORING TAX ASSET GROUP, LLC	\$15,270.47
MOOSES SALOON INC	\$167.60
MORIN, MICHAEL CHAD	\$150.50
MORISAKI, KIMBERLY	\$14.55
MORKEN, PHILIP L	\$183.64
MORRELL, JIM	\$12.00
MOTOROLA	\$7,105.73
MOUNTAIN VIEW PET CREMATORY INC	\$278.00
MSU EXTENSION PUBLICATIONS	\$38.00
MTS-MONTANA TECHNICAL SOLUTIONS INC	\$3,492.68
MULOCK, DAN J CREDIT SHELTER TRUST	\$127.18
MUNSON, ROSE	\$19.65
MURDOCH'S RANCH & HOME SUPPLY, INC	\$1,743.56
MURPHY'S CARPETECH	\$99.95
MWI VETERINARY SUPPLY	\$3,036.07
MY SHOP	\$241.00
NACHC	\$1,338.25
NADVORNICK, ROBERT J & PAMELA J	\$39.48
NAGARA	\$150.00
NASO, CAROLYN	\$9.25
NATIONAL BUSINESS FURNITURE INC	\$307.90
NATIONAL CHILDREN'S ALLIANCE	\$500.00
NEBRASKA DEPT OF MOTOR VEHICLES	\$3.00
NELSON, JOHN S	\$24.75
NELSON, SUZANNE L	\$415.33
NELSON, VAN KIRKE	\$17.10
NEWMAN, MICHAEL M. MD PC	\$350.00
NICKERSON, WALTER T	\$226.74
NOBLE EXCAVATING	\$92,650.58
NOHBELL CORPORATION	\$135.00
NOMAD TECHNOLOGIES INC	\$260.00
NORCO, INC	\$2,744.78
NORTH VALLEY REFUSE	\$60.00
NORTH VALLEY SEARCH & RESCUE	\$125.96
NORTH VALLEY SENIOR CENTER	\$1,805.13
NORTHWEST FUEL SYSTEMS	\$91.51
NORTHWEST LANDSCAPING	\$641.25
NORTHWEST PARTS & EQUIPMENT	\$1,532.85
NORTHWEST PIPE FITTINGS INC	\$22.04
NORTHWEST PORTABLES LLC	\$900.00
NORTHWEST TRUCK REPAIR INC	\$6,487.12
NORTHWESTERN ENERGY 1	\$15,734.72

**JANUARY, 2011
(Continued)**

NOVKO KALISPELL	\$1,138.86
O'CONNOR, DENNIS & CAROLYN	\$83.72
O'NEIL PRINTERS, INC	\$300.00
O'REILLY AUTO PARTS	\$13.29
OFFICE DEPOT	\$160.00
OLIVER, THOMAS M & BILLIE MARIE	\$68.94
OLSON, DEELYNN	\$202.69
PACIFIC STEEL & RECYCLING	\$769.96
PAGE NORTHWEST	\$27,750.98
PALOMBO, RAYMOND A	\$118.92
PARADIGM MANAGEMENT PC	\$100,246.34
PARAGON BERMUDA (CANADA) LTD	\$551.00
PARKER, JEANNE	\$177.50
PASZEK, DEBBIE	\$42.00
PATHOLOGY ASSOCIATES MEDICAL LABS	\$287.14
PATHWAYS HEALTHCARE	\$1,956.00
PAULSON, JOAN	\$100.00
PAXMAN, EDITH S	\$525.00
PAYNE, MIKHAEL	\$22.20
PENCO POWER PRODUCTS	\$61.88
PEPSI-COLA BOTTLING COMPANY	\$920.50
PETERSEN, DAVID & SALLY A	\$142.73
PETTY CASH - AOA	\$41.27
PETTY CASH - FCHC	\$131.57
PETTY CASH - HEALTH	\$25.00
PETTY CASH - REFUSE DISPOSAL DIST.	\$39.96
PETTY, MEGAN A	\$252.50
PETTYJOHN'S THE WATER STORE INC	\$76.00
PFIZER ANIMAL HEALTH	\$893.12
PHIL'S PLUMBING, INC	\$588.00
PHOTO VIDEO PLUS	\$193.23
PIERCE MFG. COMPANY INC	\$9,533.05
PIETERICK, SANDRA	\$14.57
PILSCH, COREY	\$191.86
PINNACLE INVESTIGATION CORP	\$85.55
PITNEY BOWES INC	\$107.70
POWELL, JOHN MARVIN	\$336.94
PRETORIA TRANSIT INTERIORS	\$229.92
PRINDIVILLE, GEORGE & MARY KAY	\$261.53
PROFORMA ALBRECHT & CO	\$551.05
PURDY, ERIKA S.	\$30.27
PURDY, RYAN	\$260.56
PUTZIER, ELSA LIVING TRUST	\$46.54
QUANDT, PHILLIP MICHAEL	\$64.72
QUEEN, RAYMOND E & KRISTY A	\$27.30
QUIMBY, MARY	\$8.00
QWEST	\$261.90
R&S NORTHEAST, LLC	\$775.86
RANDOM HOUSE INC	\$165.60
RANKOSKY, JENNIFER	\$2,424.60
READY FREDDY INC	\$250.00
REISINGER, BECKY	\$18.98
RICHWINE, MASON E & KATHLEEN D	\$24.95
RIEBE'S MACHINE WORKS INC	\$204.00
RIMROCK STAGES INC	\$1,026.60
RINGQUIST SIGNS, INC	\$240.10
ROADY, CHARLES & GAYLA	\$124.94
ROBBINS, FREDERICK A	\$7.45
ROBINSON, STEVE	\$29.00
ROCKY MOUNTAIN IMAGES INC	\$605.92
RODA, RICHARD H & CAROL	\$126.48
ROEDEL, LARRY 1	\$167.88
ROLL, ARLEN	\$20.40
ROSAUERS 1	\$295.42
ROSE COMMUNICATION	\$100.00
ROSENBERG, MARVIN	\$37.50
ROSENBERG, RON R	\$7.25
ROYBAL'S ABBEY CARPET	\$1,347.18
S&K GLOBAL SOLUTIONS	\$126.95
S&S CANOPIES	\$282.00
SAMPSON, DOYLE P	\$23.00
SANDERS COUNTY LEDGER	\$42.00
SANDS, ROBERT M & CHERYL D	\$1,620.29
SANOFI PASTEUR, INC	\$6,321.75
SAPP JR, THOMAS F	\$155.00
SARGENT FAMILY REVOCABLE TRUST	\$255.67
SCHIMPF-MARTINI, CHRISTINE F	\$53.65
SCHLAGENHAUFER, RON	\$37.47
SCHLEGEL & SONS CONTRACTOR INC	\$130.50

**JANUARY, 2011
(Continued)**

SCHMIDT, JOAN CONSULTANT	\$594.00
SCHNEIDER, KIMBERLY A	\$216.80
SCHOOL DISTRICT #6	\$165.00
SCHOTT, WADE B	\$242.56
SCHROEDER, SKIP JOSEPH	\$160.00
SCHULTZ, KERRI	\$17.10
SEAMAN, MICHAEL V	\$1,719.32
SELBYS	\$945.10
SENER, RUTH JANE	\$128.32
SERVO, DOUGLAS B	\$17.10
SETTLE, STEVEN D	\$76.91
SHAFER, BENJAMIN C & AMANDA G	\$14.10
SHEPPARD, ILYSE	\$36.37
SHEREMETA, RICHARD & DOLORES E	\$408.93
SHERMAN, JON	\$241.44
SHERWIN WILLIAMS	\$28.68
SHERWOOD, GEORGE	\$65.00
SHI INTERNATIONAL CORP	\$319.20
SHINN, LLOYD & BARBARA R	\$71.29
SHORT, DANIEL D	\$51.04
SIMPLEXGRINNEL LP	\$360.00
SKURVID, NANCY J, RPR	\$273.35
SKYBERG, RICK	\$78.97
SLAYBAUGH, YVONNE M	\$110.31
SLITERS ACE	\$87.57
SMITH MEDICAL PARTNERS LLC	\$310.56
SMITH, CHRISTA R	\$42.02
SMITH, PATRICK J	\$399.68
SMITH, SHARON MARGARET	\$32.61
SMITH, TRACY	\$38.25
SMITHS CUSTOMER SERVICE	\$79.52
SMITHWICK-HANN, GRIER	\$75.00
SOCIETY FOR HUMAN RESOURCE MANAGEMT	\$180.00
SOFTCODE, INC	\$3,200.00
SOLOMON, MAURY D	\$116.50
SOMERS, MICHAEL K & JULIE K	\$70.13
SONICLEAR TRIO SYSTEMS, LLC	\$295.00
SORENSEN, BEVERLY	\$206.60
SORENSEN, STUART F	\$478.00
SPILLMAN, JACK	\$105.00
SPIRIT DOCUMENT SERVICES	\$20.00
SPOTTED EAGLE, MARTHA	\$52.80
SPURLOCK, JOANN L	\$27.30
ST MARIE GRAPHICS	\$20.00
ST MARIE, LIZ	\$115.50
STAPLES CREDIT PLAN	\$252.98
STATE PUBLIC DEFENDER	\$70.75
STEELE, HOMER LYLE	\$655.14
STEFANATZ, JOHN	\$28.80
STERICYCLE INC	\$230.00
STEVENS, MARLENE K	\$50.50
STEWART TITLE OF MISSOULA CO, INC	\$50,000.00
STONEHEATLEY, PAULA	\$127.55
SULLIVAN BROS. CONSTRUCTION INC	\$1,125.00
SULLIVAN, MARK R	\$54.00
SUNRISE MANAGEMENT & DEVELOPMENT LLC	\$15.93
SWANA	\$181.00
SWISS CHALET EXCAVATING	\$750.00
SWT ENGINEERING, INC	\$10,471.65
SYKES GROCERY	\$5.00
SYKES PHARMACY INC	\$234.00
SYSCO FOOD SERVICES OF MONTANA INC	\$7,720.05
TACKE, DAWN	\$44.46
TERRY'S SMALL ENGINE & REPAIR	\$6.00
TESSCO INCORPORATED	\$539.62
THE EAGLE GROUP NORTHWEST INC	\$1,657.00
THEISSEN, DENNIS W	\$7.77
TERRIEN, C TERRY	\$149.24
THREE RIVERS BANK	\$4,321.05
THUNKER, DOUG & VICKI	\$143.43
TIMLICK, CHERYL L	\$53.00
TJONES CONSTRUCTION	\$5,000.00
TORGERSON, KENNETH LAWRENCE & LINDA	\$55.00
TOTAL ACCESS GROUP INC	\$1,092.11
TOWNE PRINTER, THE	\$187.00
TRACEY, ROBERT B & D DARLENE TRUST	\$49.50
TRACKER SOFTWARE CORP, INC	\$510.00
TRI-STATE RESTAURANT SUPPLY INC	\$597.23
TRIMBLE NAVIGATION LTD	\$1,343.90

**JANUARY, 2011
(Continued)**

TRIPLE W EQUIPMENT INC	\$1,931.78
TURNIPSEED, G BENJAMIN & CHERAL S	\$442.54
TYLER TECHNOLOGIES INC	\$13,509.95
TYLER, PETE	\$39.00
TYSON, JEAN S LIVING TRUST	\$202.97
UI CONTRIBUTIONS PROGRAM	\$8,486.90
UNIQUE MANAGEMENT SERVICES INC	\$644.40
UNITED TOOL RENTAL INC	\$441.00
UNITED WAY OF FLATHEAD COUNTY	\$10.00
UNIVERSAL ATHLETIC SERVICE INC	\$98.08
US POSTAL SERVICE	\$185.00
VALENTINE, CONNIE B	\$46.38
VAN DEREN, ROY	\$299.37
VAN HELDEN, STEPHEN J	\$417.45
VAN SWEDEN, ROBERT P	\$61.20
VERIZON WIRELESS 4	\$4,746.22
VISA	\$87.66
VLACHOS, WILLIAM & CAROLINE	\$199.93
VONDAL, DAYLE R	\$19.20
WAGGENER, TED A	\$135.20
WALLACE, ALEXIS	\$12.51
WALLER, DANIELLE	\$12.56
WALLIN, BARB	\$23.22
WALTER, DAVID P & BARBARA L	\$47.48
WARNER, ROBERT LOUIS & MARY LOUISE	\$608.55
WASPC	\$125.00
WEAKLY, JAMES B	\$14.55
WEB COMMERCE PARTNERS INC	\$49.75
WEIGUM, ARCHIE E & THELMA M	\$461.38
WELD CO SHERIFFS OFFICE	\$39.88
WERK, KAITLYN	\$25.00
WESTERLUND, LILLY K	\$25.21
WESTERN BUILDING CENTER 3	\$1,677.84
WESTERN ELECTRONICS, INC	\$225.00
WESTERN MT STATE VETERANS CEMETERY	\$70.00
WESTERN STATES EQUIPMENT COMPANY	\$28,997.03
WESTERN STATES INSURANCE	\$65.00
WESTPHAL, CALVIN A	\$20.16
WHITAKER, RICHARD A	\$50.19
WHITEFISH AUTO PARTS INC	\$8,559.14
WHITEFISH CHAMBER OF COMMERCE	\$185.00
WHITEFISH GOLDEN AGERS INC	\$1,685.13
WHITEMAN, ANDY	\$220.00
WILD RIVER ADVENTURES	\$280.00
WILD ROSE PROPERTIES LLC	\$309.11
WILDER, DR WALLACE S	\$250.00
WILEY, TIMOTHY A	\$14.55
WILLIAMS, ARTHUR	\$27.30
WILLIAMS, GINNY	\$78.30
WILLIAMS, KENNETH L JR	\$99.98
WILLOWS, JAMEY FAUN	\$235.58
WINGERT, BLAISE	\$3,130.50
WINNER TRUST	\$79.17
WISHER, JEANNA	\$27.30
WOOD, PATRICIA B	\$34.44
WOOLARD, MARVIN E "BUTCH"	\$132.00
YEE, GARY	\$253.21
YERIAN, LARRY	\$42.40
ZEE MEDICAL SERVICE	\$75.29
ZOELLNER, KEAGAN	\$42.60
	\$1,837,721.37

Claims for the month of January, 2011 approved this 10th day of February, 2011.

**BOARD OF COUNTY COMMISSIONERS
Flathead County, Montana**

**By/s/James R. Dupont
James R. Dupont, Chairman**

**By/s/Paula Robinson
Paula Robinson, Clerk**

JANUARY, 2011
(Continued)

PUBLIC NOTICE

The Board of County Commissioners of Flathead County did this 10th day of February, 2011 approve payroll and claims for payment in the amount of \$3,002,284.90 for the period beginning January 1, 2011 and ending on January 31, 2011.

The full and complete claim list is available for public view in the Office of the Clerk & Recorder, Flathead County Courthouse, Kalispell, Montana. Individual requests for personal copies will be accepted by the Clerk and Recorder.

Dated this 10th day of February, 2011.

BOARD OF COUNTY COMMISSIONERS
Flathead County, Montana

By /s/James R. Dupont
James R. Dupont, Chairman

By /s/Paula Robinson
Paula Robinson, Clerk

Publish February 17, 2011.

PUBLIC NOTICE

The Board of County Commissioners' proceedings for Flathead County for the period of January 1, 2011 thru January 31, 2011, are now available for public review in the Office of the Clerk and Recorder, Flathead County Courthouse, Kalispell, Montana.

Individual requests for personal copies will be accepted by the Flathead County Clerk and Recorder, Flathead County, Courthouse, Kalispell, Montana.

Dated this 10th day of February, 2011.

BOARD OF COUNTY COMMISSIONERS
Flathead County, Montana

By /s/James R. Dupont
James R. Dupont, Chairman

By /s/Paula Robinson
Paula Robinson, Clerk

Publish February 17, 2011.

TUESDAY, FEBRUARY 1, 2011

The Board of County Commissioners met in continued session at 8:00 o'clock A.M. Chairman Dupont, Commissioners Lauman and Holmquist, and Clerk Robinson were present.

Chairman Dupont opened public comment on matters within the Commissions' Jurisdiction.

RB introduced himself as Head of Mission Mountain Mission View and said he has over the last decade been trying to figure out what is wrong with this country. He stated he teaches biblical law and represents people that are uninformed or misinformed and asked that the county look at the concerns presented in order to clean up their back yard. His concerns included mail fraud, the change from city court to municipal court by Whitefish, suppression of requested material, notary deficiencies, recording of fraudulent documents in Flathead County, invalid oath of offices, impersonation of an officer, elected officials neglecting their duties and truthfulness of federal agents.

Mike Greskowiak stated he is a business owner in Kalispell and is one of the founders of the Flathead Liberty Bell which is a grass roots organization informing the community of their constitutional rights. He said there are a lot of citizens watching what is happening in the valley

No one else rising to speak, Chairman Dupont closed the public comment period.

BI-MONTHLY MEETING W/ VICKI SAXBY, I. T.

[9:17:43 AM](#)

Members present:

Chairman James R. Dupont
Commissioner Dale W. Lauman

Members absent:

Commissioner Pamela J. Holmquist

Others present:

Assistant Mike Pence, I. T. Director Vicki Saxby, Clerk Kile

Vicki Saxby met with the commission and presented and reviewed a bi-monthly report on network and programmer projects, performance measures and workload indicators.

Discussion was held relative to 911 issues, radio towers and new world software.

AUTHORIZATION TO PUBLISH CALL FOR BIDS: COURTHOUSE NETWORK CABLING & COURTHOUSE DOOR AND DOOR ENTRY SYSTEM

[9:26:14 AM](#)

Members present:

Chairman James R. Dupont
Commissioner Dale W. Lauman

Members absent:

Commissioner Pamela J. Holmquist

Others present:

Assistant Mike Pence, I. T. Director Vicki Saxby, Clerk Kile

Commissioner Lauman made a **motion** to authorize chair to sign the Call for Bids for Courthouse Network Cabling and a Door Entry System. Chairman Dupont **seconded** the motion. **Aye** - Lauman and Dupont. Motion carried by quorum.

**ADVERTISEMENT FOR BIDS
FLATHEAD COUNTY COURTHOUSE / DOOR ENTRY SYSTEM
FLATHEAD COUNTY, MONTANA**

Flathead County, Montana will receive sealed bids for all labor, materials and equipment necessary for network, phone and camera cabling. All sealed bids, plainly marked as such shall be in the hands of the County Clerk and Recorder on or before 9:30 o'clock a.m. on February 22, 2011. Bids will be publically opened and read immediately thereafter.

WORK TO BE PERFORMED WILL INCLUDE:

Work generally includes installing electronic door entry systems for courthouse doors. These systems must be compatible with the current County door entry software.

Bids shall be addressed to the Flathead County Clerk & Recorder, 800 South Main, Kalispell, Montana 59901, and must be sealed and entitled "FLATHEAD COUNTY COURTHOUSE DOOR ENTRY SYSTEM." All bidders shall possess an appropriate Montana Contractor's License and no contract shall be awarded to any bidder unless he or she is the holder of a license in the class within which the value of the project falls. The bidder's Montana Contractor's License number and address shall appear on the sealed bid envelope.

Complete specifications are on file with Diana Kile in the Flathead County Commissioners office, 800 South Main Street; Kalispell, Montana 59901.

All bids offered shall be accompanied by a check payable to the Flathead County Treasurer, certified by a responsible bank, or a Bid Bond for an amount which shall not be less than ten (10%) percent of the aggregate of said proposal. The Bids shall, in open session, be publicly opened and examined and declared the same; provided, however, that no Bid shall be considered unless accompanied by said check or Bid Bond. The County may reject any and all Bids should it deem this for the public good, and also the Bid of any party who has been delinquent or unfaithful in any former contract with the County, and shall reject all Bids, other than the lowest regular bid of any responsible bidder, and may award the Contract for such work or improvement to the lowest responsible bidder at the prices named in his or her bid.

**TUESDAY, FEBRUARY 1, 2011
(Continued)**

The checks or Bid Bonds of the three (3) low responsible bidders accompanying such accepted Bids shall be held by the County until the Contract for doing said work, as hereinafter provided, has been entered into, whereupon said checks or Bid Bonds shall be returned to said bidders. If the lowest responsible bidder fails, neglects, or refuses to enter into the contract to perform said work or improvements, as hereinafter provided, then the check or Bid Bond accompanying his or her bid, and the amount therein mentioned, shall be declared to be forfeited to the County. After a Contract is awarded, the successful bidder will be required to furnish a Performance and Payment Bond in the amount of one-hundred (100%) percent of the Contract.

No bidder may withdraw his bid for at least sixty (60) days after the scheduled time for receipt of bids.

Bidders on the work will be required to comply with Montana Prevailing Wage Rates. It is incumbent upon each employer to pay, as a minimum, the rate of wages including fringe benefits for health and welfare and pension contributions, and travel allowance provisions, provided in the most current Prevailing Wage Rates. Bidders on the project will also be required to pay the State's 1% Contractor's withholding tax.

Award of the Contract will be made solely by issuance of a Notice of Award to the successful bidder by the Office of the Flathead County Clerk and Recorder.

Dated this 1st day of February, 2011.

BOARD OF COUNTY COMMISSIONERS
Flathead County, Montana

By/s/James R. Dupont
James R. Dupont, Chairman

ATTEST:
Paula Robinson, Clerk

By/s/Diana Kile
Diana Kile, Deputy

Publish on February 5 and February 12, 2011.

**ADVERTISEMENT FOR BIDS
FLATHEAD COUNTY COURTHOUSE / NETWORK CABLING
FLATHEAD COUNTY, MONTANA**

Flathead County, Montana will receive sealed bids for all labor, materials and equipment necessary for network, phone and camera cabling. All sealed bids, plainly marked as such shall be in the hands of the County Clerk and Recorder on or before 9:30 o'clock a.m. on February 22, 2011. Bids will be publically opened and read immediately thereafter.

WORK TO BE PERFORMED WILL INCLUDE:

Work generally includes providing all network, phone and camera cabling for the main courthouse, including the cabling connecting the courthouse with other County buildings.

Bids shall be addressed to the Flathead County Clerk & Recorder, 800 South Main, Kalispell, Montana 59901, and must be sealed and entitled "FLATHEAD COUNTY COURTHOUSE NETWORK CABLING". All bidders shall possess an appropriate Montana Contractor's License and no contract shall be awarded to any bidder unless he or she is the holder of a license in the class within which the value of the project falls. The bidder's Montana Contractor's License number and address shall appear on the sealed bid envelope.

Complete specifications are on file with Diana Kile in the Flathead County Commissioners office, 800 South Main Street; Kalispell, Montana 59901.

All bids offered shall be accompanied by a check payable to the Flathead County Treasurer, certified by a responsible bank, or a Bid Bond for an amount which shall not be less than ten (10%) percent of the aggregate of said proposal. The Bids shall, in open session, be publicly opened and examined and declared the same; provided, however, that no Bid shall be considered unless accompanied by said check or Bid Bond. The County may reject any and all Bids should it deem this for the public good, and also the Bid of any party who has been delinquent or unfaithful in any former contract with the County, and shall reject all Bids, other than the lowest regular bid of any responsible bidder, and may award the Contract for such work or improvement to the lowest responsible bidder at the prices named in his or her bid.

The checks or Bid Bonds of the three (3) low responsible bidders accompanying such accepted Bids shall be held by the County until the Contract for doing said work, as hereinafter provided, has been entered into, whereupon said checks or Bid Bonds shall be returned to said bidders. If the lowest responsible bidder fails, neglects, or refuses to enter into the contract to perform said work or improvements, as hereinafter provided, then the check or Bid Bond accompanying his or her bid, and the amount therein mentioned, shall be declared to be forfeited to the County. After a Contract is awarded, the successful bidder will be required to furnish a Performance and Payment Bond in the amount of one-hundred (100%) percent of the Contract.

No bidder may withdraw his bid for at least sixty (60) days after the scheduled time for receipt of bids.

Bidders on the work will be required to comply with Montana Prevailing Wage Rates. It is incumbent upon each employer to pay, as a minimum, the rate of wages including fringe benefits for health and welfare and pension contributions, and travel allowance provisions, provided in the most current Prevailing Wage Rates. Bidders on the project will also be required to pay the State's 1% Contractor's withholding tax.

**TUESDAY, FEBRUARY 1, 2011
(Continued)**

Award of the Contract will be made solely by issuance of a Notice of Award to the successful bidder by the Office of the Flathead County Clerk and Recorder.

Dated this 1st day of February, 2011.

BOARD OF COUNTY COMMISSIONERS
Flathead County, Montana

By/s/James R. Dupont
James R. Dupont, Chairman

ATTEST:
Paula Robinson, Clerk

By/s/Diana Kile
Diana Kile, Deputy

Publish on February 5 and February 12, 2011.

BI-MONTHLY MEETING W/ KAROLE SOMMERFIELD, 4-H OFFICE & STEVE SIEGELIN, MSU EXTENSION WESTERN REGION DEPT. HEAD

9:30:35 AM

Members present:

Chairman James R. Dupont
Commissioner Dale W. Lauman

Members absent:

Commissioner Pamela J. Holmquist

Others present:

Assistant Mike Pence, MSU Extension Dept. Mgr. Steve Siegelin, 4-H Director Karole Sommerfield, Extension Agent Pat McGlynn, Clerk Kile

Karole Sommerfield, Steve Siegelin and Pat McGlynn met with the commission and presented a Flathead County Annual Extension Report and a 2010 Annual Extension Report from Montana State University.

Steve Siegelin thanked the commission for their support and spoke about uncertainties with future federal funding.

Karole Sommerfield highlighted and reviewed positive events with 4-H.

Pat McGlynn spoke about the Master Gardner class and funding received for cherry grower's research.

CONSIDERATION OF ADOPTION OF RESOLUTION OF INTENT TO CREATE RSID #151/ BERNE ROAD

9:45:44 AM

Members present:

Chairman James R. Dupont
Commissioner Dale W. Lauman

Members absent:

Commissioner Pamela J. Holmquist

Others present:

Assistant Mike Pence, Deputy County Attorney Tara Fugina, Toby McIntosh, Linda Smith, Clerk Kile

Tara Fugina reported 16 lots are involved in the proposed RSID for improvements on approximately 100,000 square feet of Berne Road at a cost of \$68,000 to property owners. It was noted the cost per lot breaks down to \$4,250.

Mike Pence noted the county would participate in the cost to improve the road.

Commissioner Lauman made a **motion** to adopt Resolution #2283 and authorized chair to sign the Notice of Passage of Resolution of Intent. Chairman Dupont **seconded** the motion. **Aye** - Lauman and Dupont. Motion carried by quorum.

RESOLUTION NO. 2283

RESOLUTION RELATING TO RURAL SPECIAL IMPROVEMENT DISTRICT NO. 151; DECLARING IT TO BE THE INTENTION OF THE BOARD OF COUNTY COMMISSIONERS TO CREATE THE DISTRICT FOR THE PURPOSE OF UNDERTAKING CERTAIN LOCAL IMPROVEMENTS AND FINANCING THE COSTS THEREOF AND INCIDENTAL THERETO THROUGH THE ISSUANCE OF RURAL SPECIAL IMPROVEMENT DISTRICT BONDS SECURED BY THE COUNTY'S RURAL SPECIAL IMPROVEMENT DISTRICT REVOLVING FUND

BE IT RESOLVED by the Board of County Commissioners of the County of Flathead (the "County"), Montana, as follows:

Section 1. Proposed Improvements; Intention To Create District. The County proposes to undertake certain local improvements (the "Improvements") to benefit certain property located in the County. The Improvements consist of the making improvements to approximately 102,120 square feet of Berne Road, as more particularly described in Section 5. The total estimated costs of the Improvements are \$433,120 and the lot owners of the proposed district will responsible for approximately \$68,000 of the total cost, with the rest being paid by Flathead County. The lot owners' costs of the Improvements are to be paid from the rural special improvement district bonds hereinafter described. It is the intention of this Board to create and establish in the County under Montana Code Annotated, Title 7, Chapter 12, Part 21, as amended, a rural special improvement district (the "District") for the purpose of financing the costs of the Improvements and paying costs incidental thereto, including costs associated with the sale and the security of rural special improvement district bonds drawn on the District (the "Bonds"), the creation and administration of the District, and the funding of a deposit to the County's Rural Special Improvement District Revolving Fund (the "Revolving Fund"). The total estimated costs of the Improvements, including such incidental costs, to be financed by the Bonds are \$68,000. The Bonds are to be payable primarily from special assessments to be levied against property in the District, which property will be specially benefitted by the Improvements in an amount not less than \$68,000.

**TUESDAY, FEBRUARY 1, 2011
(Continued)**

Section 2. Number of District. The District, if the same shall be created and established, shall be known and designated as Rural Special Improvement District No. 151, of the County of Flathead, Montana.

Section 3. Boundaries of District. The limits and boundaries of the District are depicted on a map attached as Exhibit A hereto (which is hereby incorporated herein and made a part hereof) and more particularly described on Exhibit B hereto (which is hereby incorporated herein and made a part hereof), which boundaries are designated and confirmed as the boundaries of the District. A listing of each of the properties in the District is shown on Exhibit C hereto.

Section 4. Benefitted Property. The District and territory included within the limits and boundaries described in Section 3 and as shown on Exhibits A and B are hereby declared to be the rural special improvement district and the territory which will benefit and be benefitted by the Improvements and will be assessed for the costs of the Improvements as described in Section 1. The property included within said limits and boundaries is hereby declared to be the property benefitted by the Improvements.

Section 5. General Character of the Improvements. The general character of the Improvements is the design, engineering and construction for asphalt on top of a gravel sub-base, of approximately 102,120 square feet of Berne Road, and improvements to driveway approaches and road drainage.

Section 6. Engineer and Estimated Cost. Jackola Engineering shall be the engineer for the District. The Engineer has estimated that the cost of the Improvements, including all incidental costs, is \$433,120.

Section 7. Assessment Method - Equal Assessments. All properties in the District will be assessed for their proportionate share of the costs of the project. The total estimated cost to lot owners of the proposed district is \$68,000 and shall be assessed against each lot, tract or parcel of land in the District equally, such that each lot, tract or parcel in the District shall be assessed for the same amount of the cost of the project. The costs of the project per lot, tract or parcel to be assessed shall not exceed \$4,250. The assessment for each lot, tract or parcel of land for the project will be 1/16 of the total costs to lot owners and will not exceed \$4,250.

Assessment Methodology Equitable and Consistent with Benefit. This Board hereby determines that the method of assessment and the assessment of costs of the specific Improvements against the properties benefitted thereby as prescribed in this Section 7 are equitable and in proportion to and not exceeding the special benefits derived from the respective Improvements by the lots, tracts and parcels to be assessed therefor within the District.

Section 8. Payment of Assessments. The special assessments for the costs of the Improvements shall be payable over a term not exceeding 20 years, each in equal semiannual installments of principal, plus interest, or equal semiannual payments of principal and interest, as this Board shall prescribe in the resolution authorizing the issuance of the Bonds. Property owners have the right to prepay assessments as provided by law.

Section 9. Method of Financing; Pledge of Revolving Fund; Findings and Determinations. The County will issue the Bonds in an aggregate principal amount not to exceed \$68,000, in order to finance the costs of the Improvements. Principal of and interest on the Bonds will be paid from special assessments levied against the property in the District. This Board further finds it is in the public interest, and in the best interest of the County and the District, to secure payment of principal of and interest on the Bonds by the Revolving Fund and hereby authorizes the County to enter into the undertakings and agreements authorized in Section 7-12-2185 in respect of the Bonds.

In determining to authorize such undertakings and agreements, this Board has taken into consideration the following factors:

(a) Estimated Market Value of Parcels.

The Board reasonably expects that the market value of the lots, parcels or tracts in the District as of the date of adoption of this resolution, will increase by at least the amount of the special assessment to be levied under Section 7 against each lot, parcel or tract in the District, as a result of the construction of the Improvements.

(b) Diversity of Property Ownership.

Analysis of the number of property owners, business or family relationships, if any, between property owners, the comparative holdings of property by owners in the District indicated that of the 16 properties, there are 12 different owners. The substantial diversity in ownership makes it less likely that financial difficulties of one or related property owners will require the Revolving Fund to make a loan.

(c) Comparison of Special Assessments and Property Taxes and Market Value.

The amount of the proposed assessments against each lot, parcel or tract in the District (\$4,250), compares favorably to the estimated market value of each lot, parcel, or tract, which range in value (land only, not including improvements) from approximately \$15,473 to \$118,830. The amount of security for any Revolving Fund loan is more than adequate. Since the estimated market value of each parcel compares favorably to the sum of special assessments any loan from the Revolving Fund loan would be adequately secured.

(d) Delinquencies.

The amount of delinquencies in the payment of outstanding property taxes levied against property in the District is only 1 of the 16 properties. The lack of substantial delinquent taxes suggests that the likelihood of financial difficulties is small, making the necessity for a Revolving Fund loan unlikely.

(e) The Public Benefit of the Improvements.

The public benefit to be derived from the Improvements is substantial. The Improvements meet an urgent and important need of the County to prevent dust on County roads in rural areas of the County for public health and safety reasons.

(f) Newly Platted Subdivision.

The District is not a recently platted subdivision or proposed subdivision plat. The lots are not owned by a developer, but are owned by 12 different parties.

**TUESDAY, FEBRUARY 1, 2011
(Continued)**

Section 10. Public Hearing; Protests. At any time within thirty-two (32) days from and after the date of the first publication of the notice of the passage and approval of this resolution, any owner of real property within the District subject to assessment and taxation for the cost and expense of making the Improvements may make and file with the County Clerk and Recorder until 5:00 p.m., M.S.T., on the expiration date of said 32-day period (March 9, 2011), written protest against the proposed Improvements, or against the creation of the District or both, and this Board will at its next regular meeting after the expiration of the thirty-two (32) days in which such protests in writing can be made and filed, proceed to hear all such protests so made and filed; which said regular meeting will be held on Tuesday, the 10th day of March, 2011, at 9:00 o'clock, a.m., in the Office of the Board of Commissioners of Flathead County, Courthouse, West Annex, 800 South Main, Kalispell, Montana.

Section 11. Notice of Passage of Resolution of Intention. The County Clerk and Recorder is hereby authorized and directed to publish or cause to be published a copy of a notice of the passage of this resolution in the Daily Interlake, a newspaper of general circulation in the County on February 5, 2011, and February 12, 2011, in the form and manner prescribed by law, and to mail or cause to be mailed a copy of said notice to every person, firm, corporation, or the agent of such person, firm, or corporation having real property within the District listed in his or her name upon the last completed assessment roll for state, county, and school district taxes, at his last-known address, on or before the same day such notice is first published.

PASSED AND ADOPTED by the Board of County Commissioners of the County of Flathead, Montana, this 1st day of February, 2011.

BOARD OF COUNTY COMMISSIONERS
Flathead County, Montana

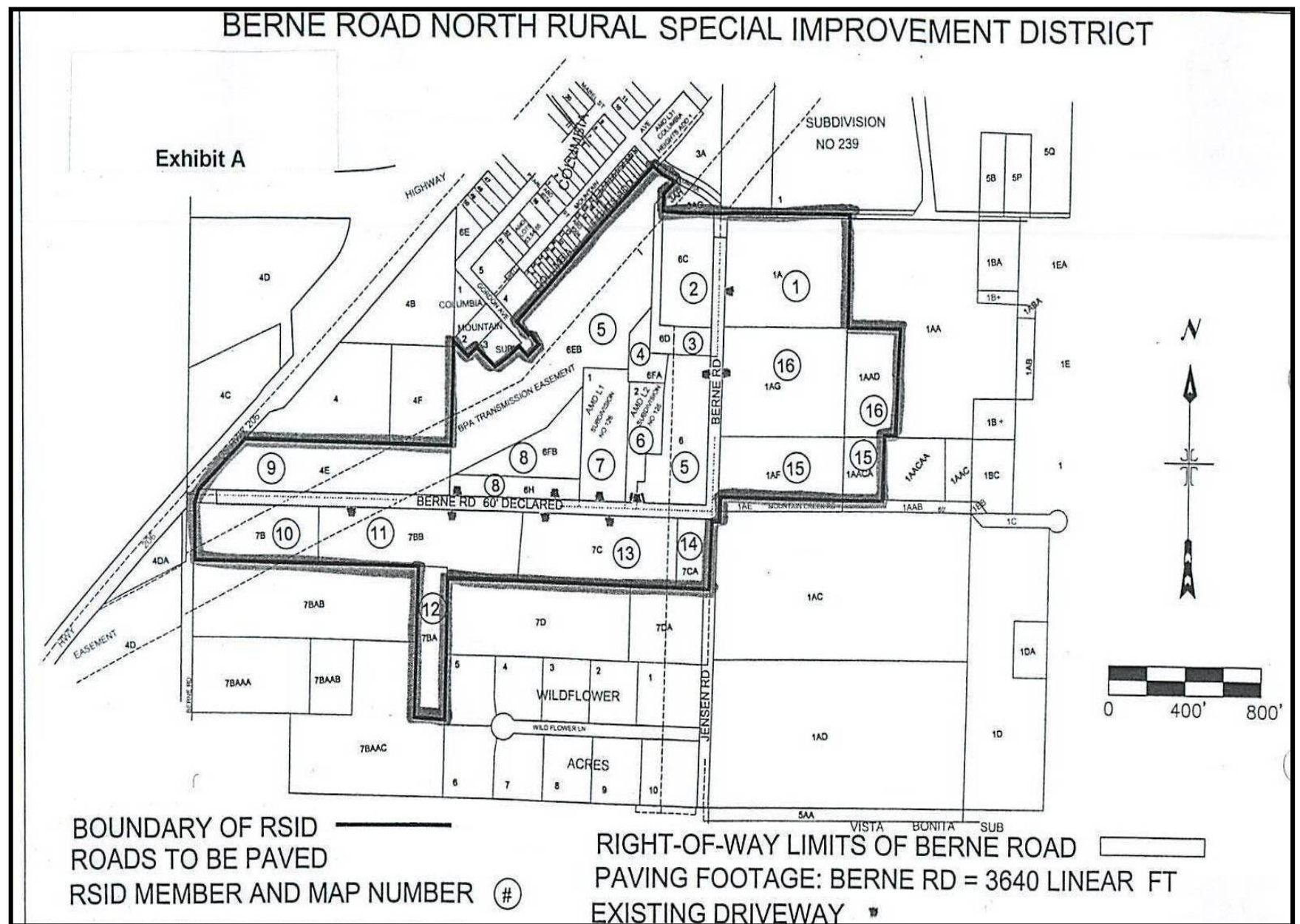
By/s/James R. Dupont
James R. Dupont, Chairman

By/s/Dale W. Lauman
Dale W. Lauman, Member

By/s/Absent
Pamela J. Holmquist, Member

ATTEST:
Paula Robinson, Clerk

By/s/Diana Kile
Diana Kile, Deputy



**TUESDAY, FEBRUARY 1, 2011
(Continued)**

APPENDIX B – LEGAL DESCRIPTION

BERNE ROAD NORTH RURAL SPECIAL IMPROVEMENT DISTRICT

This legal description includes tracts of land to be included within the Berne Road Rural Special Improvement District located within the SW1/4 and SE1/4, Section 15, T. 30 N., R. 20 W., Principal Meridian, Montana, more particularly described as follows:

Beginning at the center ¼ corner of Section 15, thence S. 86°29'28" E. along the northerly boundary of New Substation Site shown on Certificate of Survey No. 7821 (County Tract 1A), a distance of 656.89 feet to the northeast corner of said New Substation Site;

Thence, S. 3°56'12" W. along the easterly boundary of said New Substation Site a distance of 494.49 feet to the southeast corner of said New Substation Site and the northerly boundary of Tract 1, Certificate of Survey No. 4054(County Tracts 1AG and 1AAD);

Thence, S. 89°55'23" E. along the northerly boundary of Tract 1 of Certificate of Survey No. 4054(County Tract 1AAD), a distance of 223.30 feet to the northeasterly corner of said Tract 1;

Thence, S. 00°33'42" E. along the easterly boundary of said Tract 1, a distance of 494.65 feet to the southeasterly corner of said Tract;

Thence, N. 89°55'23" W. along the southerly boundary of said Tract 1, a distance of 228.76 feet to the northeasterly corner of Parcel 1 of Certificate of Survey No. 16799 (County Tract 1AF);

Thence, South along the easterly boundary of said Parcel 1 a distance of 280.75 feet to the northerly boundary of Mountain Creek Road previously known as Hagen Lane;

Thence, N. 89°55'23" W. along the northerly boundary of said Mountain Creek Road a distance of approximately 569 feet to the easterly right-of-way of Berne Road;

Thence, S. 0°33'42" W. along the easterly boundary of the Berne Road right-of-way, a distance of approximately 80 feet to the southeast corner of the Berne Road right-of-way;

Thence, S. 89°55'23" W. a distance of approximately 40 feet to the centerline of Jensen Road and the easterly boundary of Tract 1 of Certificate of Survey No. 16946 (County Tract 7CA);

Thence, S. 0°33'42" W. along the centerline of Jensen Road and the easterly boundary of said Tract 1, a distance of 319.78 feet to the southeast corner of said Tract 1;

Thence, N. 89°46'58" W. along the southerly boundary of said Tract 1 and a portion of Tract 2, Certificate of Survey No. 16946,(County Tracts 7CA and 7C)a distance of 975.85 feet to the southeast corner of Tract 1, Certificate of Survey No. 17289 (County Tract 7BB);

Thence, continuing N. 89°46'58" W. along the southerly boundary of said Tract 1, a distance of 349.96 feet to the easterly boundary of Tract 3 of Certificate of Survey No. 11235 (County Tract 7BA);

Thence, S. 0°19'48" W. along the easterly boundary of said Tract 3 a distance of 336.34 feet;

Thence, S. 0°21'01" W. continuing along the easterly boundary of said Tract 3 a distance of 336.52 feet to the southeast corner of said Tract 3;

Thence, N. 89°40'24" W. along the southerly boundary of said Tract 3 a distance of 150.00 feet;

Thence, N. 0°20'25" E. along the westerly boundary of said Tract 3 a distance of 672.88 feet to the southerly boundary of Parcel A of Certificate of Survey No. 5519 (County Tract 7BB);

Thence, N. 89°39'48" W. along the southerly boundary of said Parcel A coincident with the northerly boundary of Tract 1 of Certificate of Survey No. 11235, a distance of 1145.47 feet to the easterly right-of-way of Berne Road;

Thence, N. 0°03'48" E. along the easterly right-of-way boundary of Berne Road distance of approximately 274 feet to the easterly right-of-way of Highway No. 206;

Thence, N. 43°29'52" E. approximately 80 feet along the easterly boundary of Highway No. 206 to the southwest corner of Parcel C, Book 547, Page 635 (County Tract 4E);

Thence, continuing N. 43°29'52" E. along the easterly boundary of Highway No. 206 and the westerly boundary of said Parcel C a distance of 315.98 feet to the northwest corner of said Parcel C;

Thence, S. 89°47'30" E. along the northerly boundary of Parcel C, a distance of 1025.70 feet to the westerly boundary of Tract 1 of Certificate of Survey No. 13784 (County Tract 6EB);

Thence, N. 00°23'14" E. along the westerly boundary of said Tract 1 a distance of 431.0 feet;

Thence, N. 00°11'51" E. continuing along the easterly boundary of said Tract 1 a distance of 30.30 feet;

Thence, continuing along the northerly and easterly boundary of said Tract 1 the following courses:

S. 46°36'11" E., 100.36 feet;

N. 44°05'22" E., 59.09 feet;

S. 47°31'19" E., 119.29 feet;

N. 60°00'09" E., 80.99 feet;

N. 44°46'18" E., 71.12 feet;

S. 46°16'19" E., 65.87 feet;

N. 44°46'18" E., 80.00 feet;

N. 46°16'12" W., 65.87 feet;

S. 44°46'17" W., 10.00 feet;

N. 46°39'07" W., 81.05 feet;

N. 43°28'46" E., 1017.89 feet to the centerline of Columbia Mountain Road;

S. 53°09'06" E. along the centerline of Columbia Mountain Road 19.98 feet to the point of curvature of a 260.79 foot radius curve, concave northeasterly, having a central angle of 13° 47'24";

Along an arc length of 62.77 feet on said centerline;

S. 66°57'20" E. continuing along said centerline a distance of 38.80 feet to the northeast corner of said Tract 1;

S. 42°57'57" W. along the northwesterly boundary of P2 of Certificate of Survey No. 3570 (County Tract 3AG) a distance of approximately 101.3 feet to the northeast corner of P3 of Certificate of Survey No. 3570;

Thence, leaving said Tract 1 of Certificate of Survey No. 13784, S. 03°50'40" W. a distance of 88.2 feet to the northwest corner of P1 of Certificate of Survey No. 3570;

Thence, S. 85°24'30" E. a distance of 300 feet to the center 1/4 corner of Section 15 and the point of beginning of the Berne Road North Special Improvement District.

**TUESDAY, FEBRUARY 1, 2011
(Continued)**

APPENDIX C - Berne Road North RSID Property Details														
MEMBER & MAP NUMBER	acres	Petition Signed	sec	TRACT_ID	Book/Page, Subdivision Name or Certificate of Survey No.	ASSESSOR #	OWNER	Parcel Address	Mailing Address	CITY	STATE	ZIP	Built Upon	Waived Right
1	7.31	no	15	1A	COS 7821	E010407	Bonneville Power Administration	995 Berne Road	P.O. Box 3621	Portland	OR	97208	Yes	No
2	3.44	no	15	6C	COS 3522	none given	Bonneville Power Administration	Berne Road	P.O. Box 3621	Portland	OR	97208	Yes	No
3	1.65	no	15	6D	COS 3520	E010308	Bonneville Power Administration	Berne Road	P.O. Box 3621	Portland	OR	97208	power facilities	No
4	1	yes	15	6FA	COS 6788	972091	Benjamin I. Gress	900 Berne Road	900 Berne Road	Columbia Falls	MT	59912	Yes	No
5	13.428	no	15	6EB	COS 13784	313	Clarence G. and Jill K. Taber	810 Berne Rd.	24 Taber Lane	Columbia Falls	MT	59912	Yes	No
6	1.738	yes	15	L2 Sub.126	Am. Lot 2 Subdivision 126	983265	Ole T. Toftum	854 Berne Rd.	180 Toftum Ln.	Columbia Falls	MT	59912	Yes	No
7	3.315	yes	15	L1 Sub. 126	Am. Lot 1 Subdivision 126	2450	James M. Belmore	850 Berne Rd.	P.O. Box 1558	Columbia Falls	MT	59912	Yes	No
8	4.303	no	15	6H & 6FB	COS 13784	983010	Clarence G. and Jill K. Taber	832 Berne Road	24 Taber Lane	Columbia Falls	MT	59912	Yes	No
9	6.689	no	15	4E	Book 547, Page 635	945701	Steve R. Charland	750 Berne Rd.	P.O. Box 5067	Kalispell	MT	59903	Yes	No
10	5.29	yes	15	7B	COS 5519	601500	RBM Logging and Lumber	685 Berne Rd.	P.O. Box 1105	Columbia Falls	MT	59912	Yes	No
11	7.41	yes	15	7BB	COS 5519 and 17289	981300	RBM Logging and Lumber	675 Berne Rd.	P.O. Box 1105	Columbia Falls	MT	59912	Yes	No
12	2.317	yes	15	7BA	COS 11235	970415	Benjamin A & Joy A. Thompson	657 Berne Rd.	P. O. Box 1105	Columbia Falls	MT	59912	Yes	No
13	6.38	yes	15	7C	COS 17289	238540	Linda S. Smith	1050 Jensen Rd.	1050 Jensen Road	Columbia Falls	MT	59912	yes	No
14	1.39	yes	15	7CA	COS 16946	11146	Krystal L. Smith	1048 Jensen Rd.	1050 Jensen Road	Columbia Falls	MT	59912	Yes	No
15	4.17	yes	15	1AF	COS 16799	981589	Tyler J and Tammy L Purdy	143 Mountain Cr. Rd.	1033 Conn Road	Columbia Falls	MT	59912	No	No
16	10	yes	15	1AG	COS 4054	973656	Mark and Cindy Hagen	905 Berne Road	905 Berne Road	Columbia Falls	MT	59912	Yes	No
17	4.84	no	15	6	COS 13784	313	Clarence G. and Jill K. Taber	860 Berne Rd.	24 Taber Lane	Columbia Falls	MT	59912	Yes	No
Total	84.67 ac													

CERTIFICATE AS TO RESOLUTION AND ADOPTING VOTE

I, the undersigned, being the duly qualified and acting recording officer of the County of Flathead, Montana (the "County"), hereby certify that the attached resolution is a true copy of Resolution No. 2283, entitled: "RESOLUTION RELATING TO RURAL SPECIAL IMPROVEMENT DISTRICT NO. 151; DECLARING IT TO BE THE INTENTION OF THE BOARD OF COUNTY COMMISSIONERS TO CREATE THE DISTRICT FOR THE PURPOSE OF UNDERTAKING CERTAIN LOCAL IMPROVEMENTS AND FINANCING THE COSTS THEREOF AND INCIDENTAL THERETO THROUGH THE ISSUANCE OF RURAL SPECIAL IMPROVEMENT DISTRICT BONDS SECURED BY THE COUNTY'S RURAL SPECIAL IMPROVEMENT DISTRICT REVOLVING FUND" (the "Resolution"), on file in the original records of the County in my legal custody; that the Resolution was duly adopted by the Board of County Commissioners of the County at a meeting on February 1, 2011, and that the meeting was duly held by the Board of County Commissioners and was attended throughout by a quorum, pursuant to call and notice of such meeting given as required by law; and that the Resolution has not as of the date hereof been amended or repealed.

I further certify that, upon vote being taken on the Resolution at said meeting, the following Commissioners voted in favor thereof: **Chairman Dupont & Commissioner Lauman**; voted against the same: _____; abstained from voting thereon; _____ or were absent: **Commissioner Holmquist**.

WITNESS my hand officially this 1st day of February, 2011.



Paula Robinson, Clerk

By/s/Diana Kile
Deputy

NOTICE OF PASSAGE OF RESOLUTION OF INTENTION TO CREATE RURAL SPECIAL IMPROVEMENT DISTRICT NO. 151 AND TO ISSUE RURAL SPECIAL IMPROVEMENT DISTRICT NO. 151 BONDS OF THE COUNTY IN THE AGGREGATE PRINCIPAL AMOUNT OF \$68,000, SECURED BY THE RURAL SPECIAL IMPROVEMENT DISTRICT REVOLVING FUND

FLATHEAD COUNTY, MONTANA

NOTICE IS HEREBY GIVEN that on February 1, 2011, the Board of County Commissioners of Flathead County, Montana (the "County"), adopted a Resolution of Intention to Create Rural Special Improvement District No. 151 (the "District") for the purpose of financing the costs of certain local improvements (the "Improvements") and paying costs incidental thereto, including costs associated with the sale and the security of rural special improvement district bonds of the County drawn on the District (the "Bonds"), the creation and administration of the District, and the funding of a deposit to the County's Rural Special Improvement District Revolving Fund (the "Revolving Fund"). The Improvements shall be constructed and installed pursuant to plans and specifications prepared by Jackola Engineering.

A complete copy of the Resolution of Intention (the "Resolution") is on file with the County Clerk and Recorder which more specifically describes the nature of the Improvements, the boundaries and the area included in the District, the location of the Improvements and other matters pertaining thereto and further particulars. A map of the proposed District accompanies this notice.

The Improvements consist of the design, engineering and construction for asphalt on top of a gravel sub-base, on approximately 102,120 square feet of Berne Road, and improvements to driveway approaches and road drainage.

**TUESDAY, FEBRUARY 1, 2011
(Continued)**

The County would issue the Bonds in an aggregate principal amount not to exceed \$68,000, in order to finance the costs of the Improvements. Principal of and interest on the Bonds will be paid from special assessments levied against the property in the District in the aggregate principal amount of \$68,000 and such payment will be secured by the Revolving Fund. Subject to the limitations of Montana Code Annotated, Section 7-12-2182, the general fund of the County may be used to provide loans to the Revolving Fund or a general tax levy may be imposed on all taxable property in the County to meet the financial requirements of the Revolving Fund.

All properties in the District will be assessed for their proportionate share of the costs of the Paving Improvements. The total estimated cost of the Paving Improvements is approximately \$433,120, with the lot owners responsible for approximately \$68,000 of this cost. The lot owners costs shall be assessed against each lot, tract or parcel of land in the District equally, such that each lot, tract or parcel in the District shall be assessed for the same amount of the cost of the Improvements. There are 16 lots, tracts or parcels in the District. The estimated cost of the Improvements per lot, tract or parcel to be assessed is \$4,250.

On March 10, 2011, at 9:00 o'clock, a.m., in the Office of the Board of Commissioners of Flathead County, Courthouse, West Annex, 800 South Main, Kalispell, Montana, the Board of County Commissioners will conduct a public hearing and pass upon all written protests against the creation of the District, or the making of Improvements, that may be filed in the period hereinafter described.

Written protests against the creation of the District and the making of the Improvements may be filed by an agent, person, firm or corporation owning real property within the proposed District whose property is liable to be assessed for the Improvements. For purposes of protest, the owner of a property created as a condominium is collectively the owners of all units having an undivided interest in the common elements. The protest must be filed by the president, vice president, secretary or treasurer of the condominium owners' association, and such protest must be in writing, identify the condominium property, include a declaration or other document that shows how votes of unit owners in the condominium are calculated and be signed by owners of units in the condominium sufficient to constitute an affirmative vote for an undertaking relating to the common elements under the condominium declaration, as more particularly set forth in Section 7-12-2141, M.C.A. Such protests must be delivered to the County Clerk and Recorder at the Flathead County Courthouse, 800 South Main, Kalispell, Montana 59901, no later than 5:00 p.m., M.D.T., on March 9, 2011. As provided by law, such protests must be in writing, identify the property in the District owned by the protestor and be signed by all owners of the property. The protest must be delivered to the County Clerk and Recorder, who shall endorse thereon the date of its receipt by her.

Further information regarding the proposed District or the Bonds or other matters in respect thereof may be obtained from the Board of Commissioners at 800 South Main, Kalispell, Montana, or by telephone at 406/758-5503.

DATED this 1st day of February, 2011.

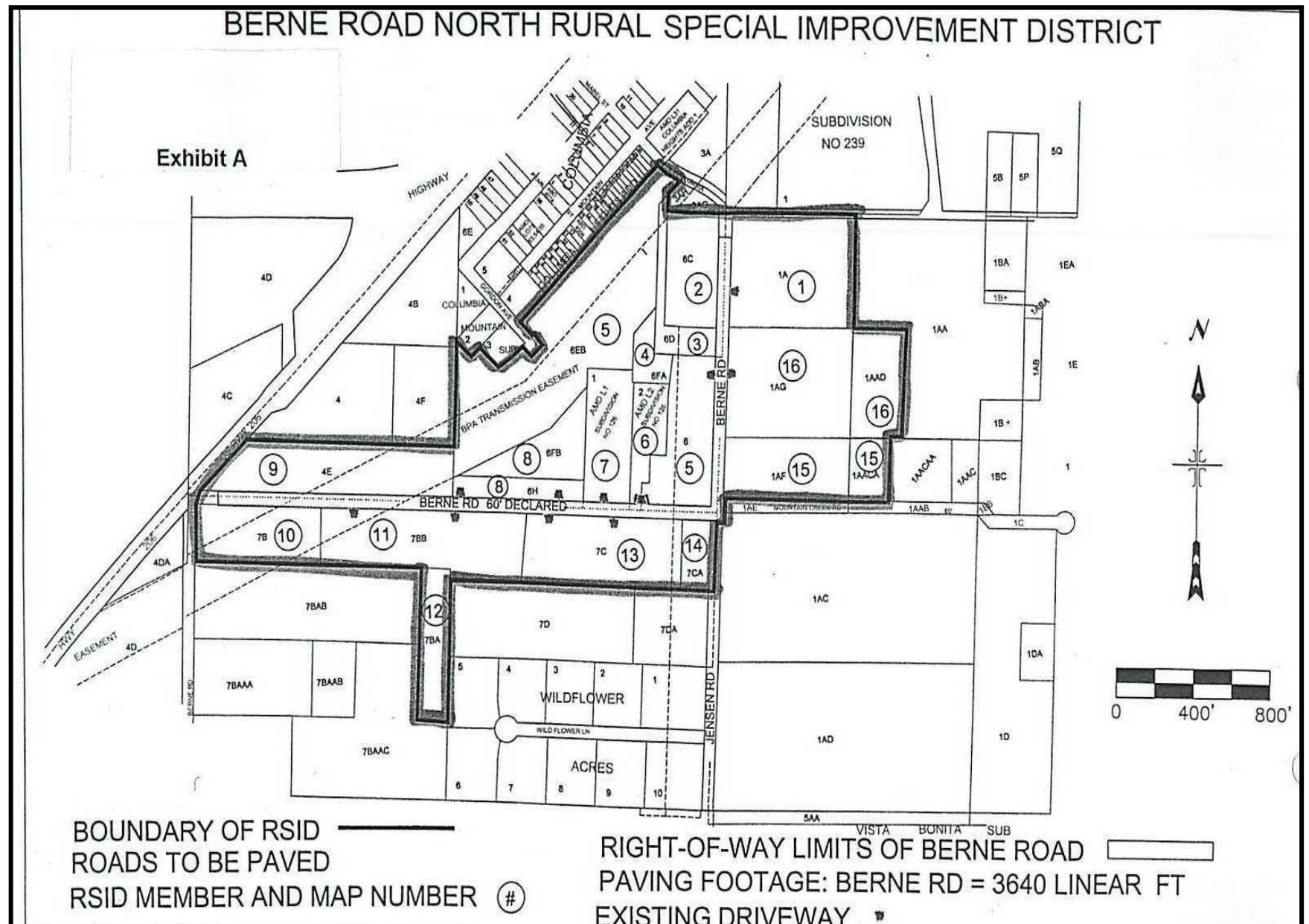
BOARD OF COUNTY COMMISSIONERS
Flathead County, Montana

ATTEST:
Paula Robinson, Clerk

By/s/James R. Dupont
James R. Dupont, Chairman

By/s/Diana Kile
Diana Kile, Deputy

Publish on February 5 and February 12, 2011.



TUESDAY, FEBRUARY 1, 2011
(Continued)

DOCUMENT FOR SIGNATURE: APEX CONSTRUCTION AGREEMENT/ EARL BENNETT PARKING LOT

[9:51:23 AM](#)

Members present:

Chairman James R. Dupont
Commissioner Dale W. Lauman

Members absent:

Commissioner Pamela J. Holmquist

Others present:

Assistant Mike Pence, Deputy County Attorney Tara Fugina, Tom Cowan, Operations Manager Solid Waste
Jim Chilton, Clerk Kile

Mike Pence noted the contract for the Earl Bennett Parking lot is for \$287,307.07. He explained there could be a change order based on quantities of asphalt and other materials.

Commissioner Lauman made a **motion** to authorize chair to sign the contract agreement with Apex Engineering. Chairman Dupont **seconded** the motion. **Aye** - Lauman and Dupont. Motion carried by quorum.

AWARD BID: COUNTY COURTHOUSE REMODEL

[9:56:00 AM](#)

Members present:

Chairman James R. Dupont
Commissioner Dale W. Lauman

Members absent:

Commissioner Pamela J. Holmquist

Others present:

Assistant Mike Pence, Deputy County Attorney Tara Fugina, Clerk & Recorder Paula Robinson, Corey
Johnson, Steve Conway, Ryan Dunn, John Beck, Clerk Kile

Corey Johnson reported Martel Construction was the low bidder and recommended the bid for the courthouse remodel project be awarded to them.

Commissioner Lauman made a **motion** to award the bid to Martel Construction Company. Chairman Dupont **seconded** the motion. **Aye** - Lauman and Dupont. Motion carried by quorum.

DOCUMENT FOR SIGNATURE: AUTHORIZATION LETTER TO FIRST INTERSTATE BANK/ HUMAN RESOURCE OFFICE

[10:02:25 AM](#)

Members present:

Chairman James R. Dupont
Commissioner Dale W. Lauman

Members absent:

Commissioner Pamela J. Holmquist

Others present:

Assistant Mike Pence, Clerk Kile

Commissioner Lauman made a **motion** to sign the document for signature. Chairman Dupont **seconded** the motion. **Aye** - Lauman and Dupont. Motion carried by quorum.

AWARD BIDS: ROAD GRADERS/ ROAD DEPT.

[10:03:42 AM](#)

Members present:

Chairman James R. Dupont
Commissioner Dale W. Lauman

Members absent:

Commissioner Pamela J. Holmquist

Others present:

Assistant Mike Pence, Clerk Kile

Commissioner Lauman made a **motion** to award the bid to Triple W Equipment for \$380,420 for two road graders and to Western States for one grader at \$151,325. Chairman Dupont **seconded** the motion. **Aye** - Lauman and Dupont. Motion carried by quorum.

CONSIDERATION OF LAKESHORE PERMIT: WALASHEK

[10:13:21 AM](#)

Members present:

Chairman James R. Dupont
Commissioner Dale W. Lauman

Members absent:

Commissioner Pamela J. Holmquist

Others present:

Planning & Zoning Director B J Grieve, Planner Bailey Minnich, John Hollensteiner, Clerk Kile

Bailey Minnich entered into record Lakeshore Permit No. FLV 10-04; an application submitted by Mike and Gail Walashek, 1050 Angel Point Road for a minor variance to place a dock closer to the side property lines than what the required setback allows based on the amount of lakeshore frontage.

TUESDAY, FEBRUARY 1, 2011
(Continued)

Commissioner Lauman made a **motion** to adopt FLV 10-04 as findings of fact and approve the variance request. Chairman Dupont **seconded** the motion. **Aye** - Lauman and Dupont. Motion carried by quorum.

BOARD APPOINTMENT: LITTLE BITTERROOT LUAC & AOA

[10:18:52 AM](#)

Members present:

Chairman James R. Dupont
Commissioner Dale W. Lauman

Members absent:

Commissioner Pamela J. Holmquist

Others present:

Assistant Mike Pence, Planning & Zoning Director B J Grieve, Clerk Kile

Commissioner Lauman made a **motion** to appoint John Hughes and Marvin Rosenberg to the Little Bitterroot Land Use Advisory Committee. Chairman Dupont **seconded** the motion. **Aye** - Lauman and Dupont. Motion carried by quorum.

Commissioner Lauman made a **motion** to appoint Mary Miers and Carrol Sorenson to the AOA Board. Chairman Dupont **seconded** the motion. **Aye** - Lauman and Dupont. Motion carried by quorum.

CONSIDERATION OF ADOPTION OF FINAL RESOLUTION: CREATION OF LAKESIDE BOULEVARD NORTH ZONING DISTRICT

[10:30:23 AM](#)

Members present:

Chairman James R. Dupont
Commissioner Dale W. Lauman

Members absent:

Commissioner Pamela J. Holmquist

Others present:

Assistant Mike Pence, Deputy County Attorney Peter Steele, Planning & Zoning Director B J Grieve, Clerk Kile

B. J. Grieve noted 10 letters were received in opposition to creation of the zoning district.

Commissioner Lauman made a **motion** to adopt Resolution #2276A to create Lakeside Boulevard North Zoning District. Chairman Dupont **seconded** the motion. **Aye** - Lauman and Dupont. Motion carried by quorum.

RESOLUTION NO. 2276A

WHEREAS, the Board of Commissioners of Flathead County, Montana, held a public hearing, after the publication of legal notice, on the 20th day of December, 2010, concerning a proposal to create the zoning district to be known as the "Lakeside Boulevard North Zoning District" that area to be zoned R-2 (One Family Limited Residential);

WHEREAS, the Board of Commissioners did hear public comment on the proposed zoning change at said hearing;

WHEREAS, the boundaries of the "Lakeside Boulevard North Zoning District" would cover 87.4 acres of currently un-zoned property north of downtown Lakeside and generally located between US Highway 93, Flathead Lake, Caroline Point Road and the Lakeside District. The district could be separated into three areas with different characteristics. 1) The southern third of the area characterized by single family residential uses on small lots. There are multi-family uses in this area, and an operating hotel. 2) The middle third of the area characterized by single family residential uses on medium size lots. There is a duplex in this area. 3) The upper third of the area characterized by single family residential uses, agricultural uses and large lots. An additional 44 lots could be created within the district.

WHEREAS, the Board of Commissioners reviewed the recommendation of the Flathead County Planning Board regarding the proposed creation of the Lakeside Boulevard North Zoning District;

WHEREAS, based upon that recommendation and the public testimony, the Board of Commissioners of Flathead County, Montana, in accordance with Section 76-2-205, M.C.A., adopted a resolution of intention (Resolution No. 2276, dated December 20, 2010) to create the zoning district to be known as the Lakeside Boulevard North Zoning District that area to be zoned R- (One Family Limited Residential);

WHEREAS, notice of passage of that Resolution was published once a week for two weeks, on December 23 and December 30, 2010, and the Board of Commissioners did not receive written protests to the change from forty per cent (40%) of the freeholders.

**TUESDAY, FEBRUARY 1, 2011
(Continued)**

NOW THEREFORE, BE IT RESOLVED that the Board of Commissioners of Flathead County, Montana, in accordance with Section 76-2-205(6), M.C.A., hereby creates the zoning district to be known as the "Lakeside Boulevard North Zoning District". The boundaries of the "Lakeside Boulevard North Zoning District" cover 87.4 acres of property north of downtown Lakeside and generally located between US Highway 93, Flathead Lake, Caroline Point Road and the Lakeside District and is to be zoned R-2 (One Family Limited Residential) as those terms are used and defined in the Flathead County Zoning Regulations.

DATED this 1st day of February, 2011.

BOARD OF COUNTY COMMISSIONERS
Flathead County, Montana

By/s/James R. Dupont
James R. Dupont, Chairman

By/s/Dale W. Lauman
Dale W. Lauman, Member

By/s/Absent
Pamela J. Holmquist, Member

ATTEST:
Paula Robinson, Clerk

By/s/Diana Kile
Diana Kile, Deputy

TAX REFUND: STANLEY

[10:35:41 AM](#)

Members present:

Chairman James R. Dupont
Commissioner Dale W. Lauman

Members absent:

Commissioner Pamela J. Holmquist

Others present:

Assistant Mike Pence, Treasurer Adele Krantz, Tax Clerk Sue Wagner, Don McBurney, Clerk Kile

Adele Krantz explained the Treasurers' Office procedures in charging penalty and interest.

Don McBurney explained Mr. Stanley sent him the check on November 23 and explained the reason why it wasn't delivered to the Treasurer until December 3.

General discussion continued in regards to past procedures and the Administrative Rules of Montana.

Commissioner Lauman made a **motion** to deny the refund request. Chairman Dupont **seconded** the motion. **Aye** - Lauman and Dupont. Motion carried by quorum.

TAX REFUND: NICOLETTI

[10:48:22 AM](#)

Members present:

Chairman James R. Dupont
Commissioner Dale W. Lauman

Members absent:

Commissioner Pamela J. Holmquist

Others present:

Assistant Mike Pence, Clerk Kile

Mike Pence explained the Department of Revenue discovered an error on an assessment and recommended a refund of \$204.95 be made.

Commissioner Lauman made a **motion** to approve the refund request. Chairman Dupont **seconded** the motion. **Aye** - Lauman and Dupont. Motion carried by quorum.

9:00 a.m. Commissioner Holmquist: Health Board Retreat
4:00 p.m. Commissioner Holmquist: Flathead County Coalition meeting @ Sykes (till 6)

At 5:00 o'clock P.M., the Board continued the session until 8:00 o'clock A.M. on February 2, 2011.

WEDNESDAY, FEBRUARY 2, 2011

The Board of County Commissioners met in continued session at 8:00 o'clock A.M. Chairman Dupont, Commissioners Lauman and Holmquist, and Clerk Robinson were present.

8:30 a.m. Weed & Parks Board meeting @ Weed & Parks Office
11:00 a.m. County Attorney meeting @ Co. Atty's Office

At 5:00 o'clock P.M., the Board continued the session until 8:00 o'clock A.M. on February 3, 2011.

THURSDAY, FEBRUARY 3, 2011

The Board of County Commissioners met in continued session at 8:00 o'clock A.M. Chairman Dupont, Commissioners Lauman and Holmquist, and Clerk Robinson were present.

- 8:30 a.m. Commissioner Dupont: AOA TAB @ Eagle Transit**
- 10:00 a.m. Commissioners Workshop @ Weed & Parks Office Conference Room**

At 5:00 o'clock P.M., the Board continued the session until 8:00 o'clock A.M. on February 4, 2011.

FRIDAY, FEBRUARY 4, 2011

The Board of County Commissioners met in continued session at 8:00 o'clock A.M. Chairman Dupont, Commissioners Lauman and Holmquist, and Clerk Robinson were present.

NO MEETINGS SCHEDULED

At 5:00 o'clock P.M., the Board continued the session until 8:00 o'clock A.M. on February 7, 2011.
