

Evergreen Commuter Bus Schedule July 1, 2018

- Bus service for the general public of all ages.
- The route is run four times a day: twice in the morning, twice in the afternoon
- The table below shows stop numbers with departure times.
- Stop map, names and addresses are on the back of this schedule.
- Please be at your stop 5 minutes early as buses leave on time.

Bus Stop Departure Times

#1	#29	#30	#31	#32	#33	#34	#35	#36
	7:00	7:04	7:07	7:10	7:13	7:15	7:17	7:20
7:30	7:33	7:35	7:38	7:41	7:44			
	10:00	10:02	10:05	10:08	10:11	10:15	10:18	10:19
	10:22							
	2:00	2:02	2:05	2:08	2:11	2:15	2:18	2:19
	2:22				4:35	4:41	4:44	4:46
	4:50	5:00	5:03	5:06	5:09	5:15	5:18	5:20
5:35	5:45	5:47	5:49	5:52	5:54	5:56	5:57	

Transfer to Kalispell City Bus



- All vehicles are lift-equipped.
- Premium Dial-A-Ride service is available limited hours to eligible Evergreen passengers. Application required.

**Fare \$1.00
each way**

- \$25.00 unlimited monthly pass
- \$10.00 punchcards
- **Exact change, pass or punchcard only**

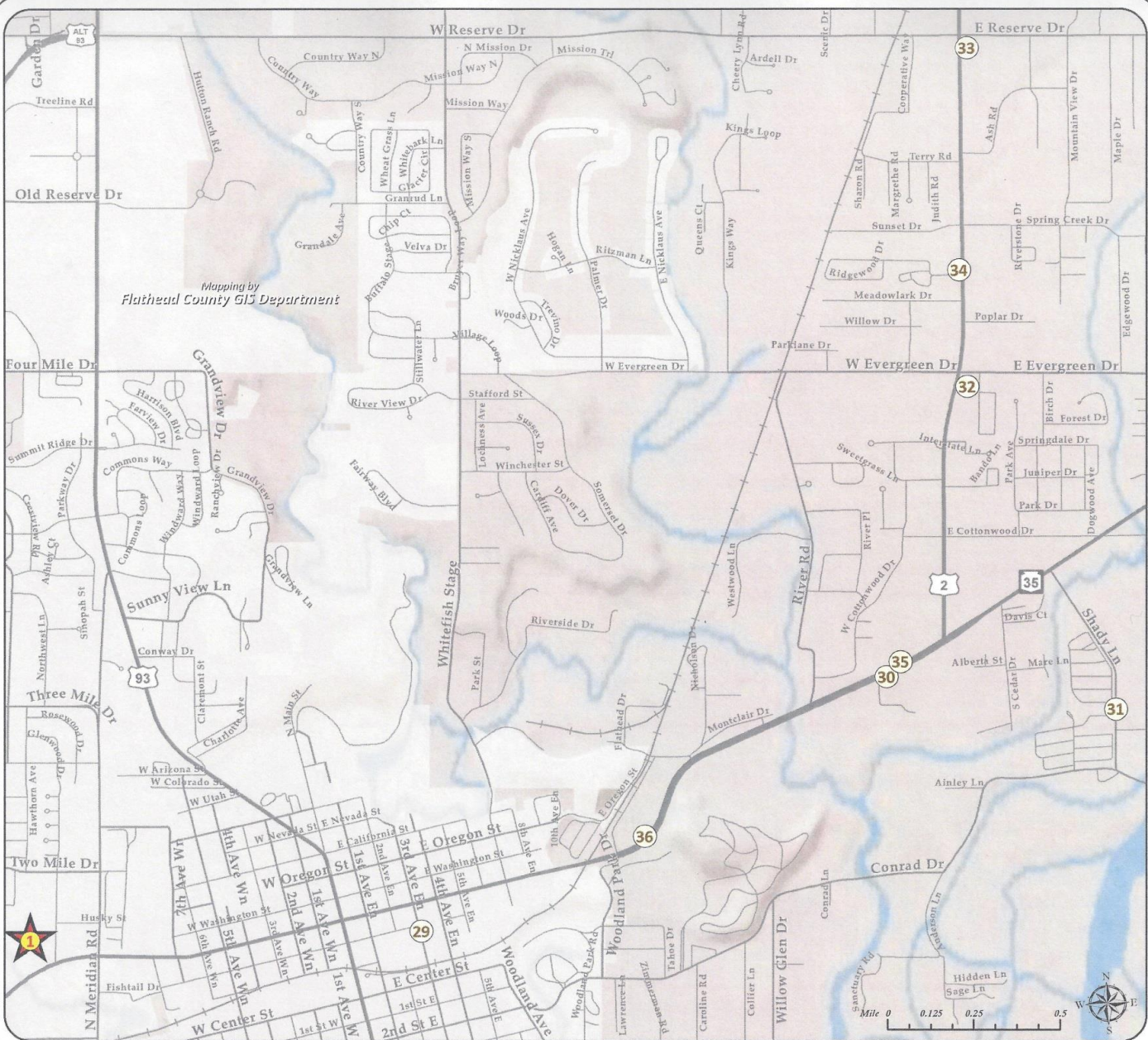
Hours

- Monday-Friday
- 4 Runs: Starting at 7:00am, 10:00am, 2:00pm & 4:35pm
- Buses do not run on county holidays



406-758-5728

flathead/mt.gov/eagle



The areas depicted on these maps herein are for illustrative purposes only and do not necessarily meet mapping, surveying, or engineering standards.

Evergreen Commuter Bus Route Stops

(1) Gateway Community Center
- 1203 US Hwy 2 West

(29) Smith's Grocery
- 195 3rd Ave EN

(33) Aspen Square
- Corner US Hwy 2 and East Reserve

(30) Super One Evergreen
- 1346 East Idaho

(34) Charlie Wong's
- 2316 US Hwy 2 East

(31) Meadow Manor
- 150 Shady Ln

(35) Kmart
- 2024 US Hwy 2 East

(32) Glacier Bank Evergreen
- 2199 US Hwy 2 East

(36) Alpine Inn
- 1009 US Hwy 2 East